



SOLD FOR \$4400. Lindenhof T. C. Elvira, the first cow in the sale ring at the 44th Renewal Guernsey Sale held in conjunction with the American Guernsey Cattle Club Annual Meeting this week, sold for \$4400 Elvira, consigned by Mr. and Mrs. K. D. Linde, Oxford R1, went to Rougemont, North Carolina. In the Lancaster Farming Photo taken at the Guern-

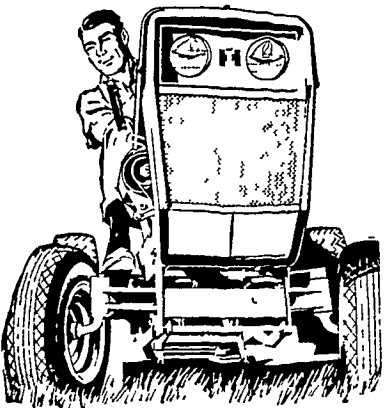
sey Sales Pavilion Wednesday are (left to right) Merton Sowbry, contender; Mr. and Mrs. Linde, sellers; Atherton Hobler (partly hidden) contender; Chester Williams, contender and Roland Beauvais, Manager of Quail Roost Farm, buyer. Don Brown is at the halter. In the sale box is William Juzi, Pa. Guernsey Breeders and John Merryman, Auctioneer.

Secret Service

The US Secret Service, a bureau of the Treasury Department, was originally established to detect and arrest counterfeiters. Its agents were assigned to other executive departments for specialized duties and it was a logical choice to protect the nation's president.

FREE ROTARY MOWER

With Purchase of an **INTERNATIONAL® CUB CADET®** Lawn & Garden Tractors



5 NEW MODELS

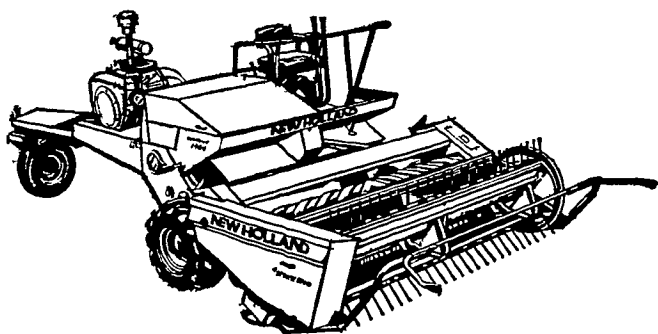
- 72—7hp, regular transmission
- 104—10hp, regular transmission
- 105—10hp, Hydrostatic Drive
- 124—12hp, regular transmission
- 125—12hp, Hydrostatic Drive

Full line of over 50 work-saving attachments. Cub Cadet, best reason ever to make lawn and garden chores fun.

COPE & WEAVER CO.

New Providence
Ph: 786-7351

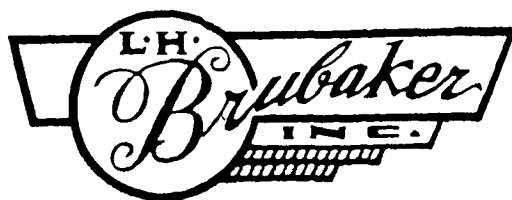
A new non-stop mower-conditioner from the people who started it all.



Self-propelled Model 1469 Haybine® mower-conditioner has 9-foot 3-inch cut and full-width, spiral rubber rolls. Keeps going when others plug! Two pull-type models also available: 7-foot 3-inch cut and 9-foot 3-inch cut.

Also ask about the popular pull-type models. Also available now is a used model 460.

NEW HOLLAND
DIVISION OF SPERRY RAND



R. D. 3, Lititz, Pa.
350 Strasburg Pike, Lancaster

Ph. Lanc. 397-5179 - Strasburg 687-6002 - Lititz 626-7766

Ground Covers

Ground covers have a place on many properties and on many farms; around the home and the farmstead there are often shaded areas of steep banks that are difficult to grow grass upon and dangerous to mow. We get numerous office calls from homeowners having problems in growing turf under heavy shade; this is almost impossible and the solution is

either to thin out the tree above to have less shade, or plant the area to a ground cover such as pachysandra, myrtle or baltic ivy; these low-growing plants will cover most any area in a few years time and eliminate mowing and soil erosion. Out in the rural areas on steep banks the same ones may be used, or crown vetch can be planted to hold the soil and give attractive cover at all times of the year.

The **BIG** Three for **BIG** Yields!
DEKALB®
POWER PLANTS

XL-45
XL-66
XL-85

America's top leader in the trend to modern corn growing. Bred to take high populations, narrow rows. Great combine hybrid.

The sensational single-cross for the central corn-belt. Stands well, produces big yields at wide population and fertility ranges.

A big-eared, high producing single-cross. A little later maturity than XL-66. A great all-round performer at moderate populations.

For the numbers that pay. Go **DEKALB** all the way!



XL SEE ME NOW!

P. L. ROHRER & BRO., INC.

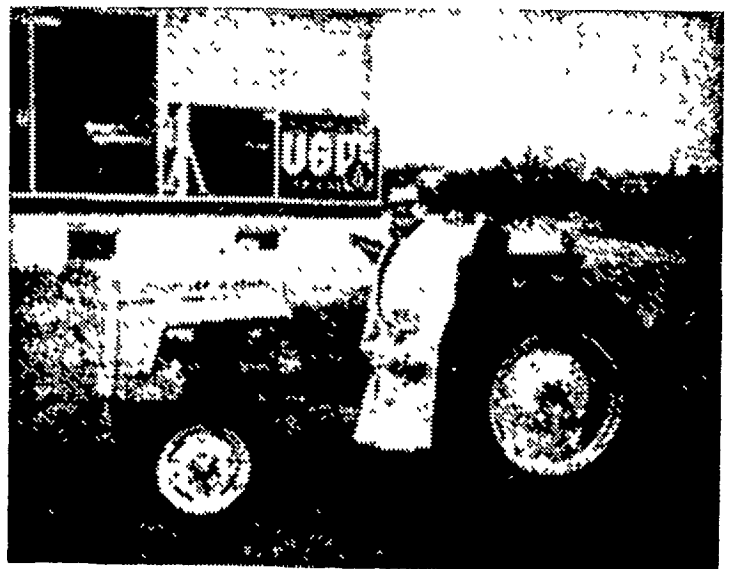
Smoketown, Pa.

397-3539

FARMERS:

Note The Many Advantages Gained By Using L. P. Gas In Your Tractors.

- Longer Engine Life
- Lower Fuel Costs
- Less Down Time
- No Road Tax On Farm Use With Ugitte L. P. Gas



Eli Good, (pictured), changed this tractor from gasoline to Ugitte Bottled Gas. The same gas many Lancaster County Housewives cook with.

For Complete Information Call or Write.

UGITE GAS COMPANY

Box 210

Ephrata, Penna. 17522

Phone 733-2207