



CONSERVATION SPEECH WINNERS are Lee Ressler, (center) East Earl R1, first place and Roger Campbell, (right) Kirkwood R1, second place. Henry Hack-

man, Soil Conservation District Vice-Chairman makes the presentation. The contest was held Thursday night at the Farm and Home Center. L. F. Photo

#### Conservation (Continued from Page 1)

son of Mr. and Mrs. Raymond Campbell, Kirkwood R1. Roger, a student at Solanco High School had the topic, "Water, a Declining Resource." Clark Stauffer, Ephrata R1,

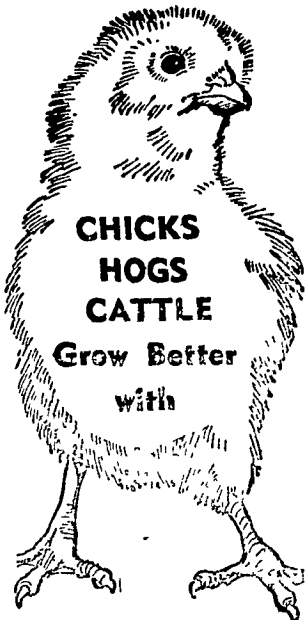
was third; Ron Zimmerman, anon, though the date has not Narvon R1, was fourth and Mark been announced.

Wagner, Washington Boro R1, Henry Hackman and Ken Depoe from the Conservation

Ressler is scheduled to con-District and Orval Bass Conser-tend in an area meet in Leb- vation Service, served as judges.

Our office colleague is a man of promise, but we'd rather have our \$5.

An old-timer is a fellow who can recall when a budget was balanced, rather than juggled.



CHICKS  
HOGS  
CATTLE  
Grow Better  
with

**PIONEER  
FEEDS**

Local Farmers Know a  
Good Feed When They  
Try It!



Since 1870

**ELMER M.  
SHREINER**

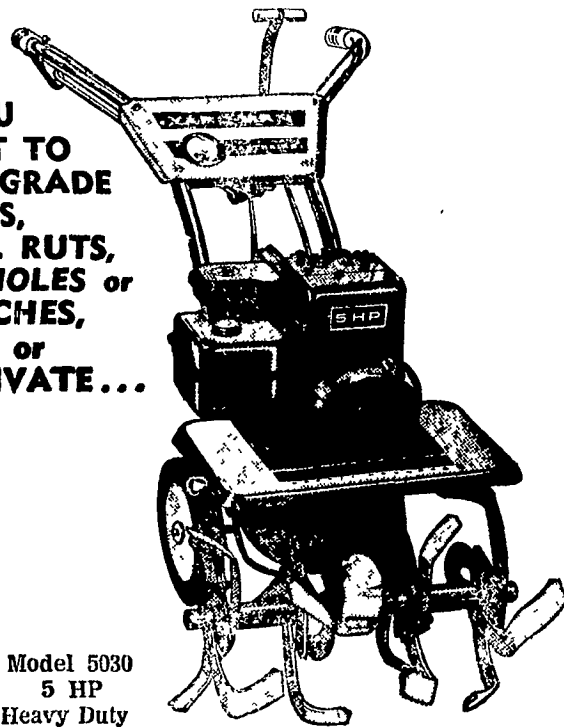
Trading as Good's Feed Mill

SPECIALIZING IN  
DAIRY AND HOG FEEDS

New Providence, Pa.  
Phone 786-2500

IF YOU  
WANT TO  
TILL, GRADE  
SLOPES,  
LEVEL RUTS,  
DIG HOLES or  
TRENCHES,  
RAKE or  
CULTIVATE...

Model 5030  
5 HP  
Heavy Duty



get a

**YARD-MAN  
EARTHBIRD**

Tough, rugged, trouble-free tillers that really dig in and get the job done. 3, 4 and 5 HP EARTHBIRD TILLERS have the features that match the performance: FINGERTIP DRAG BAR RELEASE controls tilling depth. QUICK-CHANGE BOLO TINES take only seconds to change from standard 22" width to 11" width. Tills up to 32" with optional tines. FULL POWER FORWARD AND SAFETY REVERSE controlled by one lever. SAFETY TINE SHIELD • ADVANCED POWER TRANSMISSION • TOTALLY ENCLOSED POWER GEAR BOX.

Ask Your Yard-Man Dealer About Earthbird  
FREE DELIVERY!

**GEHMAN BROS.**

1 Mile North of Terre Hill on Route 897

East Earl R. D. 1, Pa.

Ph: 445-6272

**ELI F. KING**

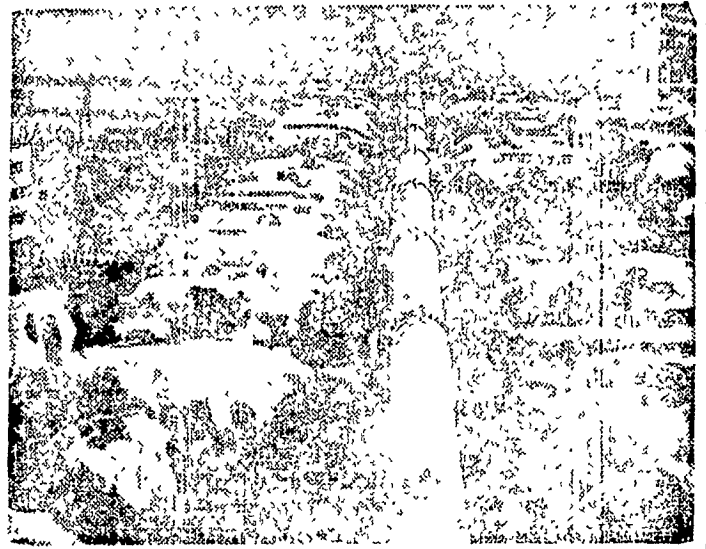
Pond Road, Ronks R. D. 1 Phone 768-3670  
(2 Miles Northwest of Intercourse)

**Martin's Hardware**

182 E. Main St., Leola, Pa.

Phone 656-3171

**FEED CATTLE FASTER  
AND MORE EFFICIENTLY  
THAN EVER BEFORE!**



NOW! Feed up to 200' of bunk per drive . . . Feed multiple lots . . . Blend complete rations with . . .

**VAN DALE'S NEW AUTOMATIC MULTI-FEEDERS**

From the pioneer in silo unloading, come two low-power, mammoth capacity, bunk feeders for in-the-barn or feedlot feeding. You can feed from more than one silo (at the same time). Feed out to from one to four-or-more lots. Feed any material with big 9" or 12" true, bearing-suspended augers, (no metal-to-metal contact.) Feed entire bunk at one time; eliminate crowding.

High capacity and dependability . . . call us and we'll come out to see you, at your convenience.

**CALEB M. WENGER**

R. D. 1, Drumore Center 548-2116 QUARRYVILLE, PA.

**AGWAY**

**NEW THIS YEAR!**

**SUTAN**

**"THE  
GRASS-  
GETTER"**

Get both — grasses and broadleaf weeds —  
with a per-plant application of  
SUTAN/ATRAZINE combination

Call Today For An Agway  
Salesman