

BEHLEN

"WAFFLE PANEL" GRAIN TANK

Take a good look at the new look in grain storage. Only Behlen offers this 2-way, grain-saving protection.

Vertical & Horizontal Ribbing gives increased resistance to downward pressure of grain.

Eave-Seal Roof Panels are grain-tight, bolted direct to the wall panels.

Oval-Tight Double Doors like a bank vault, seal out weather, rodents and insects.

Choice of sizes, 950 to 47,590 bu. including 4 new 22' and 4 new 40' diameter models.



FOR PRICES, CONTACT
Fred Frey, Mgr.

FREY BROS.

R. D. #2, Quarryville, Pa. 17566

786-2235 (717)

Pennsylvania Sire First For Type

Simpson Farm Tidy Gent has been rated as the Number One A I. Proven Holstein Sire in the U.S. for improving type. In service at Northern Breeders Association (NEBA) of Tunkhannock, Pa. he was accorded his recognition by the 1969 edition of Washbon's Directory.

Washbon's Directory is an annual publication which lists all A I proven sires available in the United States and Canada. A special feature of it is a listing of the top sires in each country for improving milk production, fat production, and type.

Gent, listed as the top sire for improving type did so on the basis of the official Type summary reported for him by the Holstein-Friesian Association of America. Based on 40 daughter-dam comparisons, it shows an increase over expectancy of +3.05 (HFA—October—1968).

The latest (Jan. 1969) Holstein Association Descriptive Ratings show Gent to be well above bred average in siring the following traits: stature, front end, hind legs, feet, foreudder, udder support and floor, and teats. The January 1969 USDA Summary based on 247 Gent daughters in 158 herds, indicates a Predicted Difference for him of +202 lbs. of milk and +8 lbs. of fat at a 92% repeatability.

Simpson Farm Tidy Gent was bred by J R Simpson and Sons of Butler, Pa. Sired by Tidy Burke Jerry he is out of Simp-

son Farm Expectation Odel, a VG 87 cow that had 6 records over 1,000 lbs. of fat before leaving the Simpson herd.

Gent was purchased in 1963 by the First Pennsylvania Breed-

ing Association of Lewisburg, Pa. Later in 1964 when First Pa. merged with other A I. Co-operatives to form NEBA, Gent moved to the present headquarters in Tunkhannock, Pa.

No Other Protein Need When You Feed

SPECIAL TANVILAC



Feeders Say . . .
"The Most Economical Feeding Plan of All"

No trouble with scours or cattle going off feed. You'll be more than satisfied with our feeding program for you'll get healthy stock, quick gains at low cost. Remember, there's a FEED LOT PROVEN TANVILAC CULTURE PRODUCT FOR EVERY FARM-FEEDING PURPOSE.

USE ONLY 1/2 LB. SPECIAL TANVILAC PER HEAD PER DAY WITH GRAIN AND ROUGHAGE — GET BIGGER PROFITS

FOR MORE PROFITS—MAIL COUPON
THE TANVILAC COMPANY, INC.
6th & Corning Aves., Box 96, Highland Park Station, Des Moines 13, Iowa
• Please Send Me Additional Information about Special Tanvilac.

I have _____ Cattle
NAME _____
ADDRESS _____



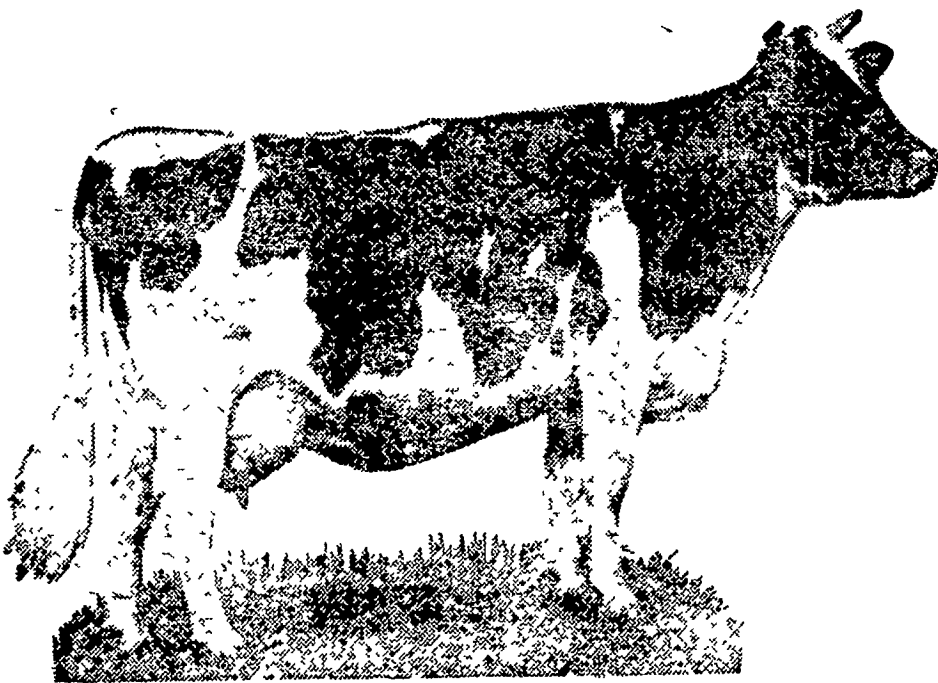
C. O. NOLT

LOCAL DISTRIBUTOR

BIRD-IN-HAND

Phone Lanc. 397-0751

A HIGH PRODUCER?



LET'S FEED HER LIKE A HIGH MILK PRODUCER SHOULD BE FED . . .

BROWN'S — 14 HI MILKER

OR

BROWN'S — 16 ROYAL

F. M. BROWN'S SONS INC.

Birdsboro • Fleetwood • Sinking



it's
dependable



plant
PIONEER CORN
for yields
you'll talk
about!

See or call your nearest PIONEER salesman