

New Alfalfa Resists Weevil

The alfalfa weevil has just lost another round in its battle to survive.

A new alfalfa variety for Maryland makes it harder for the old weevil who is "just looking for a home."

Named "Team" because it was a joint development by the agricultural experiment stations of Maryland, North Carolina, Virginia and the U.S. Department of Agriculture, the new variety has a stem that the weevil either can't or doesn't like to lay eggs in.

Fewer eggs mean fewer weevils, but the new variety has other advantages as well. It also has more resistance to anthracnose, two kinds of leaf spot and the pea aphid than do commer-

cial varieties now grown in Maryland says Dr. John Schillinger, researcher with the Maryland Agricultural Experiment Station.

Dr. Schillinger found "Team" to be a vigorous growing variety that yielded as well as Saranac, Hoquois, Cherokee or Vernal. Dairy scientists discovered that cattle ate and digested Team as well as they did Williamsburg alfalfa.

Both production and feeding experiments were conducted on the Agronomy Dairy Forage Research Farm Dr. I. C. Haut, director of the Maryland Agricultural Experiment Station, feels that the new variety will make a significant contribution to the livestock industry.

Scientists worked for 11 years through "six cycles of selection for alfalfa weevil resistance" to produce Team, but the result seems to have been worth the work. Dr. Schillinger says, "The

Skim Milk Made To Whip

Dried skim milk can now be whipped into a low-calorie dessert topping.

The key to whipping ability, ARS scientists found, was homogenization of the skim milk before drying it to a powder. When reconstituted with water and whipped, a brilliant white foam is produced which resembles stiffly beaten egg whites. The foam will hold its shape for over an hour, and whipping

weevil resistant level present in Team in combination with an early harvest management, should reduce the need of spraying for the weevil."

Certified seed will be available for planting in 1970.

utensils may be at room temperature.

Although the foam has a bland taste, it may be sweetened with sugar or a sugar substitute and flavored by adding vanilla extract or fruit flavored jam or jelly.

Each cup of the whipped topping has only about 55 calories, compared to 350 calories in an equal amount of whipped cream. One quart of topping can be whipped from one cup of the reconstituted skim milk.

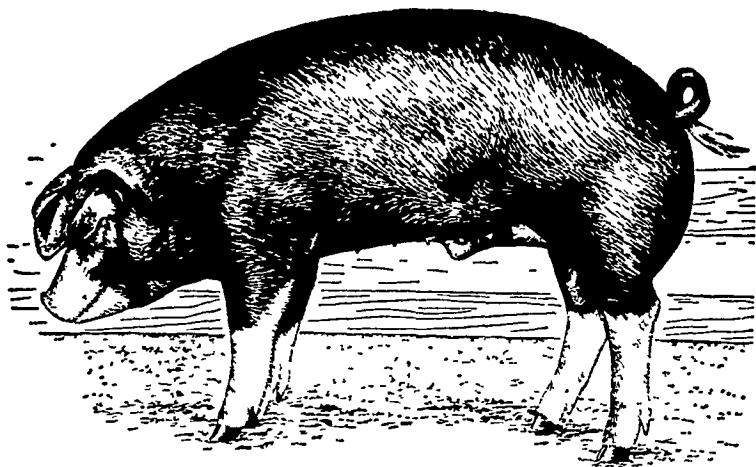
Research on the homogenized dried skim milk was conducted by chemists Arjen Tamsma, Arnold Kontson and Michael J. Pal'ansch of the Eastern Utilization research laboratory, Washington, D.C.

Ability of the reconstituted milk to foam depends upon the pressure under which it is homogenized and the percent solids in the final product. The most ideal foam was obtained when non fat milk that had been homogenized at a pressure of 4,000 pounds per square inch was reconstituted with one part water to two parts dried powder by volume and whipped for 3 minutes.

This method produced a rigid, self supporting foam containing 6 percent total solids.

Homogenizing skim milk is an expensive process with few production problems. Homogenizing would give dried skim milk a dual purpose both as a fluid milk and as a whipped topping. And like conventional dried skim milk the homogenized product does not require refrigeration.

For each ton of



Beacon's Improved Swine Feeds you purchase

Get one set of these handsome, gift packaged Americana insulated mugs FREE!



From now until May 10th, 1969 your Beacon dealer will give you one set of these handsome, practical and durable mugs free with the purchase of any combination of Beacon Swine Feeds totaling one ton purchased at one time.

This offer is being made to help introduce you to the improved Beacon Life Cycle Swine feeding program — designed to get market pigs from birth to butcher with maximum gains in minimum time.

So call your Beacon dealer today — Beacon Swine Feeds are palatable, efficient and profitable. And the six Americana mugs can be yours for trying just one ton!



GEHMAN FEED MILL, INC.
Denver

O. KENNETH McCracken
Manheim

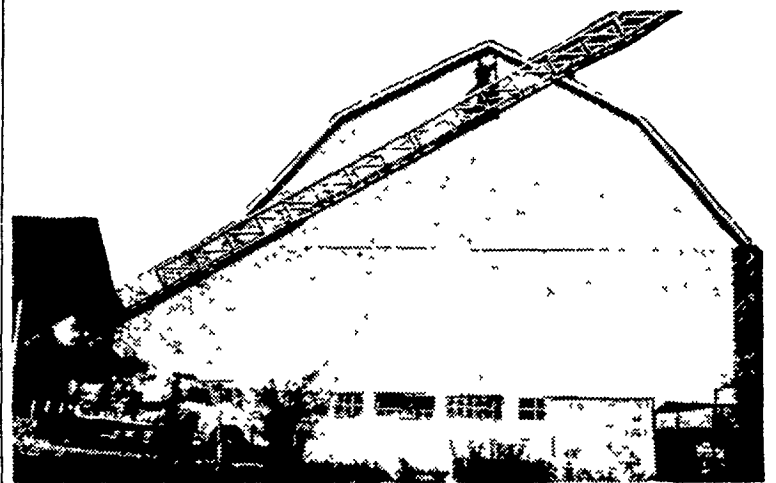
H. JACOB HOOBER
Intercourse

I. B. GRAYBILL & SON
Strasburg

EARL SAUDER, INC.
New Holland

BOMBERGER'S STORE
Elm

WE USE QUALITY PAINT AND IT DOES STAY ON!!!



Aerial Ladder Equipment Used To Paint Your Farm Buildings

- Modern and Efficient Method
- Reasonable Prices
- Over 14 Years Experience
- Spray-on and Brush-in Method Has Proven Most Satisfactory On Over 1000 Barns Of Our Well Pleased Customers.

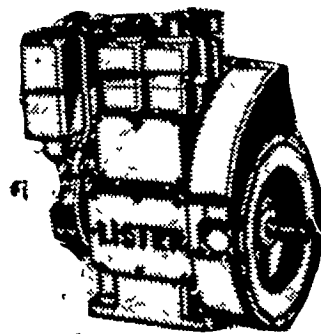
C. RALPH MILLER

R. D. 4, Manheim, Pa.

Ph. 665-3388

DISTRIBUTOR FOR LISTER DIESELS SALES - PARTS - SERVICE

We sell from 3 1-2 K. W. to 100 K. W. Generator Sets.



Lister Diesels can be mounted on various pieces of equipment.

FREE ESTIMATES ON SET-UPS

Such as: Irrigation, Refrigeration, Electric Generating Plants, etc.

Also Creamery Package Bulk Milk Tanks

C. B. HOOBER & SON

Intercourse, Penna.

Phone: 768-8231