

FOR THE
FARM
WIFE
AND
FAMILY

Miss Patterson Decorates Easter Eggs All Year

By Mrs Charles McSparran
Lancaster Farming Staff Writer

Easter comes but once a year in most people however it lasts all year for Miss Margaret Patterson of Leacock whose hobby is decorating eggs. She became interested in this art about five years ago and is self-trained. Since then she has decorated hundreds of eggs. She sells them and has given them to many of her relatives and friends.

She buys eggs of different kinds and has many unusual kinds given to her. What kinds of eggs has she decorated? Chicken, duck turkey, bantam, goose, pheasant, peafowl guinea pigeon, snake and bird eggs that fall out of nests such as robin, quail etc.

The most fascinating kind are the ones laid by her Araucana chickens. This breed originated in Chile South America and were first imported into the United States in 1930. She obtained two hens 'Becky' and 'Bessie' four years ago from Mrs. Martin Huett of Narvon R. D. 1 who raised them. Becky lays pale green eggs and Bessie lays pale pink ones. These hens are red-feathered similar to Rhode Island Reds and weigh about 3 1/2 pounds. They are good layers and their eggs are fairly good sized.

Margaret blows the contents out of the egg shells dries them, then uses an electric moto-tool to cut them. Originally she used her embroidery scissors to cut them. Her decorating materials consist of braids, velvets, ribbons, old post card and greeting card pictures, beads, bead work, felt, desert flowers, little china or plastic animals, birds, flowers, crosses, netting, feathers and Easter straw. She also paints them with water color. She has

made wedding, nativity and Easter scenes. Every little object she sees seems to give her an idea for another decoration. She puts hangers on some to hang them on driftwood trees. She makes hinged jewel cases which she lines with silk or velvet. She makes corsages of them sets them on metal stands, makes birds, bird houses, carts etc.

She has put on demonstrations of making them and exhibited them at churches, fire halls and Granges. She entered them twice at Hobby Shows held by the Optimist Club of Lancaster at the Mayser gymnasium of Franklin and Marshall College and three times at the Southern Lancaster Co. Community Fair held at Quarryville. Each time she was a first place winner.

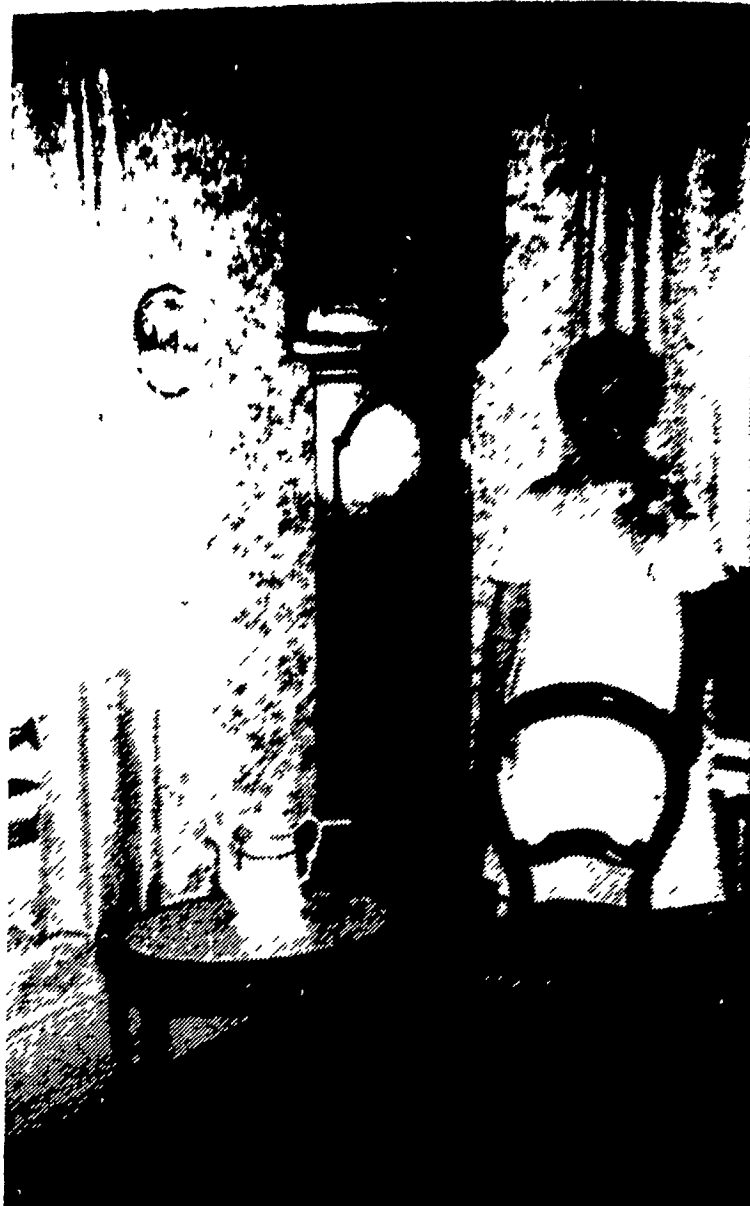
Another hobby of Miss Patterson is fancy work. She loves to knit. Her grandmother taught her to knit before she was six years old and an aunt taught her to do embroidery work when she was a young girl. She also does needlepoint and makes quilt tops. She has made four afghans and is working on her fifth, crocheted two bedspreads, two tablecloths, two suits and one dress, crocheted and knitted many baby sacque sets, caps, mittens and is now knitting a full length coat. She has patched several quilt tops, embroidered a quilt top, many scarfs, pillow cases etc. She crocheted edgings for many of the embroidered pieces. She has made many stuffed toys for bazaars. Indeed she burns midnight oil at this hobby. Even her bull-dog was the recipient of her handwork. She made him a knitted coat and cap. Yes, she made him a Santa Claus suit one Christmas.

Through the years she has won many prizes on her fancy

work at county fairs. She also is a beautiful seamstress. She makes many of her clothes and gives many garments away to relatives and for church mission work.

Pat is a flower lover and she has a green thumb. Her lawn is a mass of blooms from the spring until frost. There is a big round tulip bed that turns into a bed of annuals when summer arrives. Then the other spring flowering bulbs such as hyacinths, jonquils, crocus, valley lily of the valley, several kinds of lilies, dahlias and gladioli. She has several kinds of peonies, iris, chrysanthemums and many kinds of tea roses and climbing roses. "The roses are my favorite", she says. She has all kinds of shrubs such as forsythia, hydrangea, mock orange, rhododendron, azalea, flowering almond, spirea, five or six kinds of lilacs, hibiscus and clematis vine. Besides the usual shade trees she has flowering crab, holly, pink and white dogwood, Bonanza dwarf peach, Kwanzan cherry, wintergreen, mimosa and evergreens.

Margaret and her sister Bertha live together. They have a large house with many antiques which have been in the family for several generations. Some of their prized ones are Victorian sofas, rockers, chairs, marble top tables and bedroom furniture, drop leaf table, grandfather clock, mirrors, wash bowl and pitcher sets, lamps and dishes.



ANTIQUES. This grandfather clock with moon dial, stars and days of the month has been in the Patterson family for over 200 years. The marble top German-made table is of hand-carved walnut. The chair is one of her grandfather Gibson's which she has covered with needlepoint. L. F. Photo



BECKY, the Araucana hen lays green eggs to help Miss Patterson with her Easter decorations. L. F. Photo

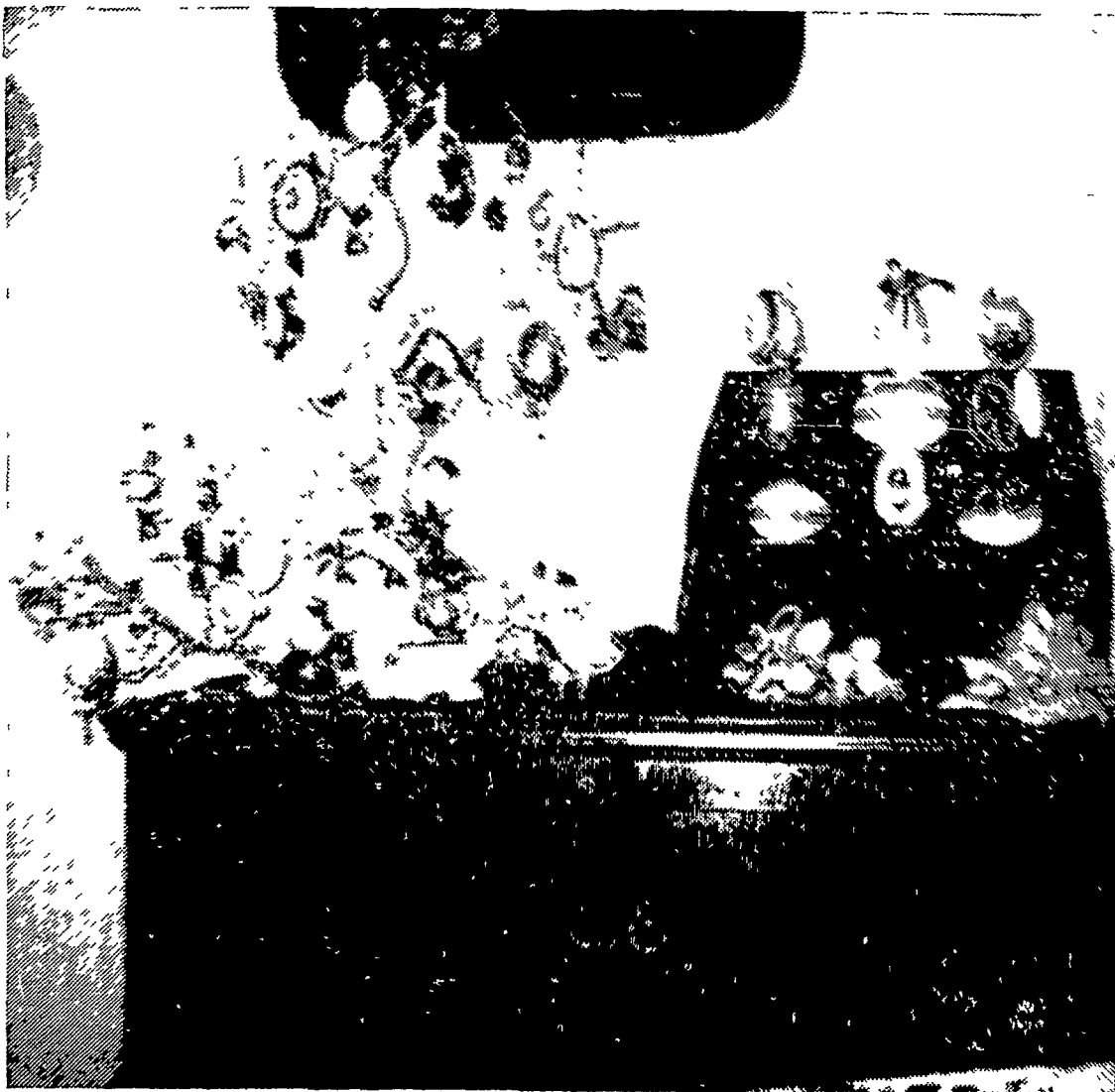
Miss Bertha is also quite handy. She sews and makes stuffed dolls and toys. She has made over 300 dolls and made the clothes for them. It is hard for her to keep up to the demand for them. She keeps a few chickens, mows the lawn and keeps house.

Pat has been employed in the office of Armstrong Cork Company, Lancaster for 40 years, having been in the Treasurer's Department, Cashier's Office the past 26 years. She is a mem-

ber of Circle A, having served as president one year and treasurer one year. They do a lot of charity work and have social activities. They have conducted tours to such places as New York City and Europe. Some of their money-making projects include candy sales, bazaars, plays, card parties and horse shows. Charities which have benefited from their endeavors are Child Development Center, Crippled Children Society. (Continued on Page 23)



MISS MARGARET PATTERSON, Leacock, exhibits a few of her decorated Easter eggs. The egg corsage completes her Easter togs. L. F. Photo



AN EASTER EGG TREE and display of jewel cases and corsages hand made by Miss Patterson. L. F. Photo