

## Cloister Chapter Hold Their Parent & Son Banquet

The Cloister FFA held its seventh annual parent-son banquet on March 21 in the Ephrata High School cafeteria.

Jeff Pfautz, Stevens R1, received the Star Red Rose degree. Glenn Martin, Ephrata R1, Chapter Star Farmer and Nelson Weaver, Ephrata R1, was named Star Greenhand.

Other foundation awards presented by Henry Givler, Area Vo-Ag Supervisor, went to Jay Zimmerman, dairy Clark Stauffer, crop, Marlin Bollinger, livestock, Galen Hackman, home improvement, Dale Groff, public speaking; Perry Ansel, poultry farming, Rodger Patterson, placement in Agriculture production; John Merkey, farm and home electrification. Rick Pfautz, soil and water conservation; Mark Buckwalter, agribusiness and Dave Hating, farm safety.

Dale Hoover, State FFA president brought greetings from the State Association. Also Ken Weber, State FFA secretary, presented Earl Stauffer the Lancaster County Farmer Award.

Chapter chain animals were awarded as follows: Nelson Weaver, dairy contract; Rick Pfautz, Lloyd Zenset and Barry Steffy, Gilt contracts; Tom Bollinger and Jay Zimmerman, sheep contracts.

Honorary Chapter Farmer degrees were presented to Aaron Stauffer, local farmer and James White, student Vo-Ag teacher at Ephrata High School. An outstanding service plaque was presented to Robert Wenger, repre-

sented C. P. Wenger and Son, Feed Mill, Ephrata.

Keystone farmer degree pins were presented to the 1969 Keystone Farmers, Jay Smoker, Earl Stauffer, Eugene Bollinger and Raymond Bollinger.

The guest speaker was Mr. Garland Gingerich, assistant principal at Penn Manor High School. He recently spent a year in Honduras as an agriculture missionary. He spoke and showed slides on "The Choice Is Yours."

A delicious family style dinner of turkey was served by the cafeteria staff and the Home Ec Club.

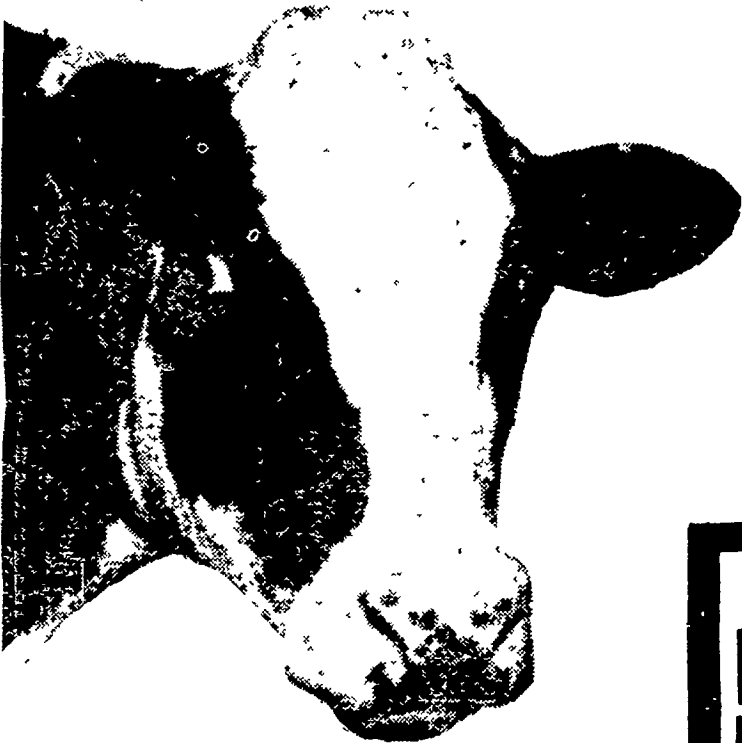
There were 150 FFA members, parents and guests present for the program. Mark Brubaker was the banquet committee chairman and Jay Zimmerman served as the Toastmaster.



AT THE EPHRATA FFA BANQUET held last Friday night are (left to right) Nelson Weaver, Star Green Hand; Earl Stauffer, Lancaster County Star Farmer

and Region II runner-up; Dale Hoover, State FFA President; Jeff Pfautz, Star Red Rose Degree Winner and Glenn Martin, Chapter Star Farmer.

# IF COWS COULD CHOOSE THEIR FEED... THEY WOULD CHOOSE RED ROSE DAIRY FEED



RED ROSE DAIRY FEEDS are available in many protein levels — to fit your particular feeding program and roughages you have readily available on your farm. Use them in your barn! You will be sure that your cows will be eating just about the best feed you can give them!



*"Best of Feed... for any breed"*

RED ROSE 14 TEST-COW FEED is a feed you'll find especially resultful. It's a coarse-textured, all-purpose feed... excellent for feeding to your milk cows, dry cows, calves and bulls — at all seasons.

Remember... it's in the milk pail where the results of good feeding really show. Red Rose Dairy Feeds will help to get the milk there. Decide to place them in your feed troughs.

### These dealers carry a complete line of Red Rose Dairy Feeds and Dairy Supplements

Walter Binkley & Son  
Lititz

E. Musser Heisey & Son  
R. D. #2, Mt. Joy, Pa.

Musser Farms, Inc.  
Columbia

Brown & Rea, Inc.  
Atglen

Heistand Bros.  
Elizabethtown

Musser's Mill  
The Buck

Elverson Supply Co.  
Elverson

Red Rose Farm Service, Inc.  
N. Church St., Quarryville

Chas. E. Sauder & Sons  
Terre Hill

Henry E. Garber  
R. D. 1, Elizabethtown, Pa.

David B. Hurst  
Bowmansville

Ammon E. Shelly  
Lititz

L. T. Geib Estate  
Manheim

Martin's Feed Mill, Inc.  
R. D. 3, Ephrata, Pa.

E. P. Spotts, Inc.  
Honey Brook

I. B. Graybill & Son  
Refton Strasburg

Mountville Feed Service  
Mountville

H. M. Stauffer & Sons, Inc.  
Witmer

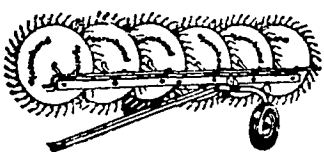
### ● Farm Calendar (Continued from Page 1)

Baby Beef and Lamb Club meet Farm and Home Center. Thursday, April 3

10 a.m.—Lancaster County Roadside Market Operators meet, Farm and Home Center.

3 p.m.—Lancaster County Poultry Directors meet, Farm and Home Center

### Look to FARMHAND for all your hay handling needs



#### WHEEL RAKES

For all haying — 5 to 9-wheel models, special Y-74, 11-wheel unit. Individual wheel suspension gets all the hay in any field at any speed.

#### BALE BUNCHER

Cuts bale handling costs as much as 30%. Bales are bunched for fast, easy loading. Simple design—trouble free operation.

#### WINDROW TURNER

Mounts on nearly all makes tractors. Speeds driving time. No window too large — none too small.



New & Used Tractors and Equipment

Authorized Farmhand Dealer

CLYDE E. KEENER

Intersection of Rt. 72 & 230  
Lancaster, Pa.  
Ph. 569-9861