

Pig Neighbors That Don't Offend

A septic tank for hog houses makes feasible the mixing of swine farms and suburban housing without bothering human neighbors with objectionable odors and pesky insects.

The project investigating this

issue was far from academic. Purdue University researchers working on contract with ARS found that, like many commercial farmers who once raise pigs far from town, they were being surrounded by ramblers and

Cape Cods. And the new neighbors had hardly moved in before they started complaining about the pigs next door.

Swine specialist H. W. Jones, entomologist R. C. Dobson, and agricultural engineer A. C. Dale teamed up at Lafayette, Ind., to see how the pigs could be rehabilitated for urban living.

They built four housing setups. The first was a conventional hog house with fenced lot. Manure and other wastes were washed down a pipe into a 40-by-40-foot lagoon.

The second house was insulated, ventilated, and equipped with a concrete floor, except for slots at the rear covering a manure pit. Manure collecting in the pit was pumped automatically into a septic tank. The liquid overflow from the tank also ran into a lagoon.

The third house was much like the second, except that wastes were pumped into a liquid manure spreader and deposited on adjacent farm land. The fourth house also was similar to the second, except that the entire building was built over part of a lagoon. Manure dropped into

the lagoon through slots in the floor of the house.

Scientists screened all houses and the single lot, eradicated insects inside, and reintroduced 500 fly pupae into each house to gain a standard infestation. They screened the lagoons at the second and fourth houses, exterminated the mosquitoes, and spread 500 mosquito larvae. The lagoon with the first house was left unscreened and untreated, to have a natural mosquito infestation for comparison.

Odor was recorded both subjectively and objectively using standard tests for alkalinity and oxygen content of lagoon water.

The septic tank built into the second setup best solved the problems of insects and odor. Flies in the house died within 30 days. Only an occasional mosquito was noticed on the lagoon.

and the water was not only odorless, but even looked fairly clean.

Spreading manure on the field was the second best alternative. Flies in the house of the third setup also died out within 30 days. There was no pond, and therefore no trouble from pond-bred mosquitoes. Odor was bad, of course, on days manure was spread.

The house built over part of a lagoon was the smelliest. It also had a moderate fly problem, with infestation steady through the summer at about 500 flies. Mosquitoes, however, disappeared from the lagoon for the same reason that the odor was so strong: so little oxygen was available in the water that the larvae suffocated.

The standard house and lot (Continued on Page 24)

Need . . .

HAY - STRAW - EAR CORN

Buy Now and Save!

More and more farmers are buying from us for better value and all around satisfaction.

Delivered — any quantity

Phone Area Code 717 687-7631

Esbenshade Turkey Farm

"America's Oldest"
PARADISE, PA.

Feeders everywhere are talking about Ful-O-Pep *Cattle-izer* Beef Supplement

In feedlot after feedlot—commercial and farm—feeders are reporting better gains and conversions at lower feed cost.

The reason: It's Ful-O-Pep Cattle-izer Beef Supplement . . . designed to enable the beef animal to get up to 20% more energy from the same amount of feed . . . and to use that extra energy for faster, more efficient gains.

Gain, efficiency of gain, cost of gain, market value of cattle, and other factors are reflected in net return. And *net return*, cattlemen are reporting, is higher when Ful-O-Pep Cattle-izer Beef Supplement is fed.

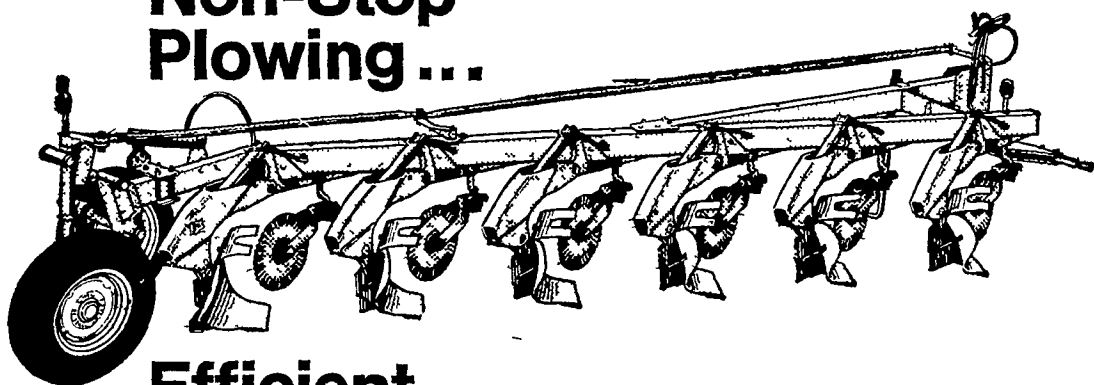
Stop in and talk it over

Stevens Feed Mill, Inc. S. H. Hiestand & Company
Stevens Salunga

Harold H. Good
Terre Hill

Stevens Feed Mill, Inc.
Leola

For Non-Stop Plowing . . .



Efficient John Deere Power-Reset Plows



Hydraulic power keeps you on the go even if one, two, three, or more bottoms hit a rock. Each standard has exclusive dual-pivot design. Bottoms move only enough to pass over the obstruction . . . then reset immediately. See us for semi-integral or drawn models in 4-, 5-, 6-, 7-, and 8-bottom sizes, choice of hitches, with or without an accumulator. Credit is available.

A. B. C. Groff, Inc.
New Holland 354-4191

Wenger Implement, Inc.
The Buck 284-4141

M. S. Yearsley & Sons
West Chester 609-2990

Shotzberger's
Elm 665-2141

Landis Bros., Inc.
Lancaster 393-3906

Now Is The Time To Order



Ivan M. Martin, Inc.
Blue Ball, Pa.

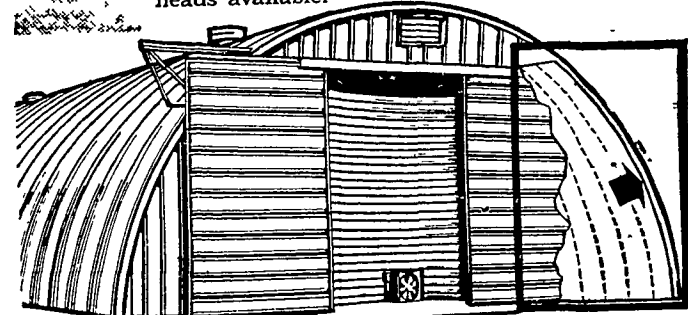
New Holland 354-4125
Gap 442-4148



BEHLEN GRAIN STORAGE CURVET

... with "extra rugged" walls

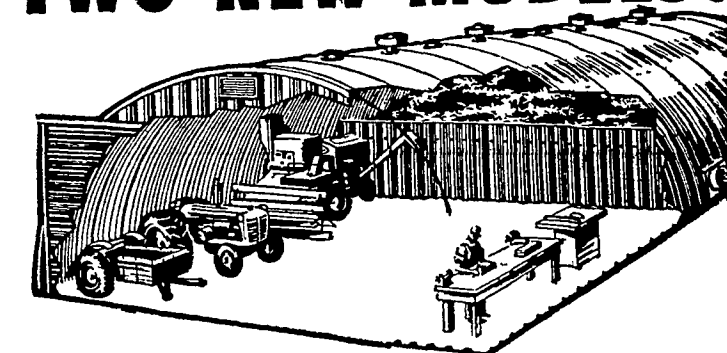
So strong you can safely store grain 12' high against sidewalls, 10' against endwalls. No ties, rods, or braces needed. In 40' widths. Length unlimited. Special drying floors and grain bulkheads available.



BEHLEN ALL-STEEL

Curvets

TWO NEW MODELS!



MULTI-PURPOSE CURVET

... for grain and/or machinery

Your economical buy . . . a utility building with high-and-wide doors to permit entry of largest implements. Addition of wall-floor ties lets you store grain 12' high against sidewall. In 53' and 40' widths. Length unlimited.

Come in and let us help you with your building problems . . . there's a Behlen Curvet to fit your needs!

FREY BROS.

FOR PRICES, CONTACT:
Fred Frey, Mgr.

R. D. #2, Quarryville, Pa. 17566
786-2235 (717)