

DHIA MONTHLY REPORT

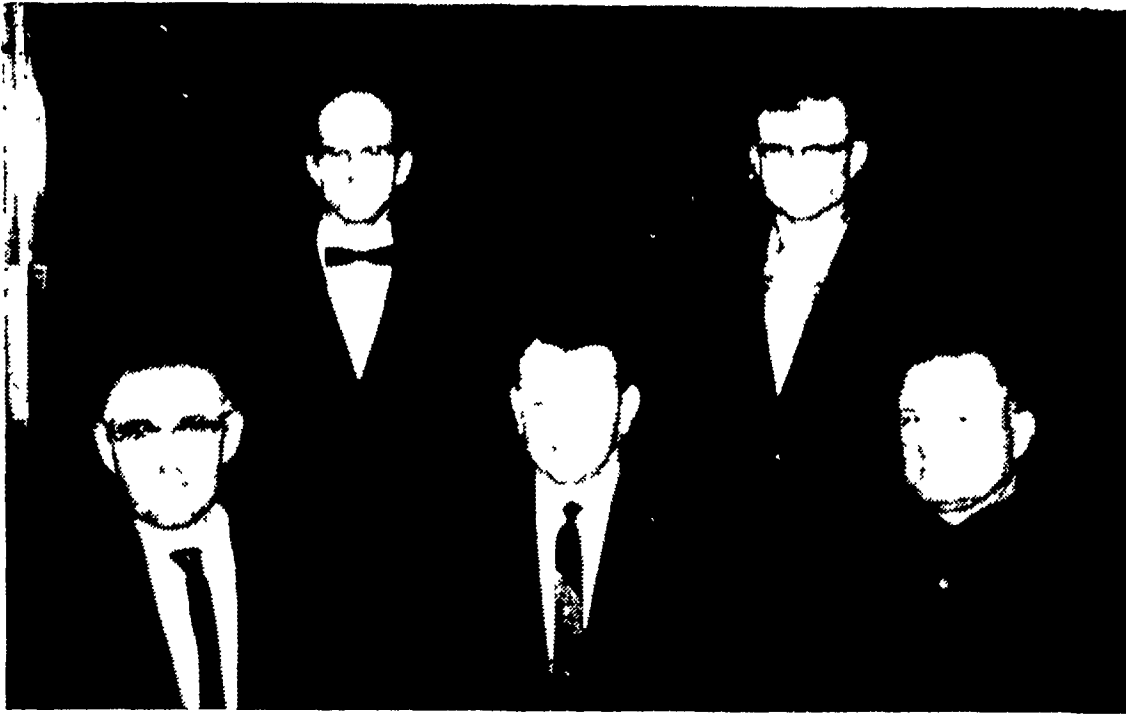
(Continued from Page 17)

Owner - Name	Breed	Age	Days	Milk	Test	Fat
Jason L. Weaver						
Ernie	RH	7-11	305	17,781	37	658
Melvin H. Ranck						
Faye	RH	3-9	305	17,256	38	658
Elmer N. Hershey						
Sadie	RH	6-8	305	16,958	39	658
John A. Harsh						
Susie	GrH	7-2	305	17,343	38	657
J. Earl Horst						
Pontiac	RH	6-6	305	18,100	36	656
E. DeLong & J. Kutz						
Alicia	RH	6-6	302	15,274	43	655
Calvin S. Kurtz						
Oley	RH	8-0	305	16,503	40	654
J. C. Pownall Est.						
Phylis	GrG	4-5	305	11,874	55	654
Bruce H. Hershey						
Delray	RH	13-3	305	16,206	40	653
Nathan G. Stoltzfus						
Edith	RH	7-0	305	17,993	36	649
Sky	RH	3-7	305	17,533	37	648
J. Scott Wolff						
Maggie	GrG	4-3	305	12,970	50	649
Isaac M. Brubaker						
Beth	RH	6-9	305	16,237	40	648
Robert T. Bowman						
Masterpiece	GrH	7-5	305	15,731	41	648
Mahlon Shoemaker & Son						
Princess	RH	4-3	298	15,650	41	648
J. Kenneth Hershey						
Lois	RH	7-7	305	18,244	35	646
Jay R. Foreman						
Fobes	RH	7-1	305	16,299	40	646
Harold M. Shank						
Nan	RH	6-6	305	16,032	40	646
Lester T. Good						
Peggy 2	GrH	7-10	305	18,464	35	645
Clair M. Hershey						
Flossie	RH	7-1	305	16,966	38	645
Fred Cruder						
3	RG	5-6	305	13,604	47	644
Edna	RG	9-2	305	13,207	49	644
38	RG	6-6	305	14,432	45	643
James L. Landis						
Pat	RH	10-0	305	16,863	38	643
David H. Weiler						
Pabst	RH	5-7	305	16,332	39	643
Lester J. Wiker						
Spots	GrH	5-9	305	18,634	34	642
Weidler Brothers						
Shirley	RH	5-4	305	18,137	35	642
Lester M. Hawthorne						
Maxine	GrH	7-2	305	19,607	33	641
Clarence H. Harnish						
Kaylee	RG	5-2	305	13,267	48	641
Melvin M. Groff						
Dusty	RH	3-5	305	16,808	38	640

HIGH DAILY AVERAGE OF BUTTERFAT

Owner	Breed	Days On Test	No. Cows	% In Milk	Cow Days Milk Lbs.	% Fat	Fat Lbs.
David S. Lapp	R&GrH	29	260	95.2	58.4	38	221
J. Z. Nolt	R&GrH	36	357	84.4	54.1	39	211

(Continued on Page 22)



NEW DHIA DIRECTORS are seated (left to right) Donald Eby, Secretary; Richard Hess, President; and John Breman, Vice President. Standing is Wilbur Houser, Head Tester and Jacob Houser,

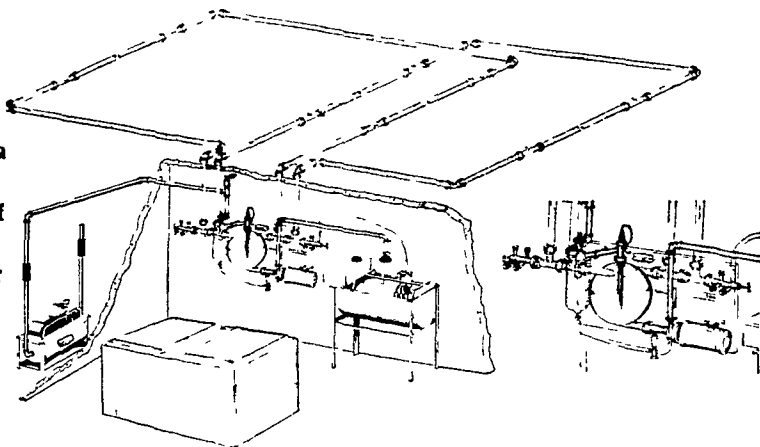
Jr., Treasurer. These men were elected and appointed at the regular DHIA board meeting held Monday night at the Farm and Home Center. L. F. Photo

Perfection Can Put A Pipeline In Any Barn

WHY BUY A PIPELINE?

For An Average 40 Cow Herd You Can . . .

1. Save walking 100 miles a year.
2. Save carrying 292 tons of milk a year.
3. Save 200 hours per year on an average herd.
4. Produce higher quality milk.
5. Increase your milk production.



WHY BUY A PERFECTION PIPELINE?

1. Engineered for the modern dairy farm of today as well as the dairy farm of tomorrow. Around the barn pipelines and milking parlors.
2. The only milkhouse control unit that is assembled at our modern new factory on a stainless steel panel. Pretested for trouble free operation, self-draining with patented washing features.
3. Built and guaranteed by Perfection Milker-Division of Sta-Rite Industries, Inc., of Delavan, Wisconsin, a recognized leader in home water systems and agricultural components.

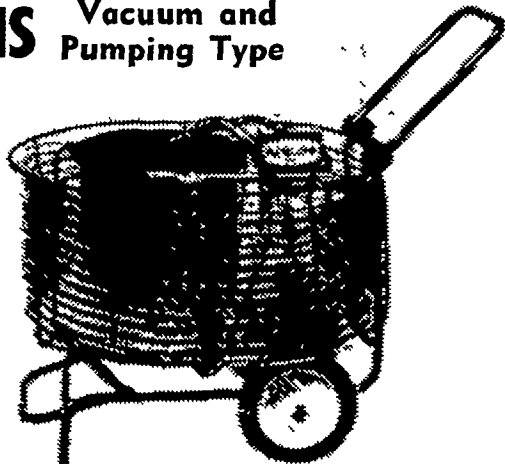
TRANSFER STATIONS Vacuum and Pumping Type

- 24 Hour Milking Equipment Service
- Installation and Service

CALL TODAY AND ASK FOR AN APPOINTMENT

Agway Bee Line's Local Commodity Technicians are:

MR. FRED KERLIN
MR. HAROLD KINSEY



Bee Line Supply Center

1027 DILLERVILLE ROAD, LANCASTER

24 HOUR SERVICE DAILY — PH. 717-397-4761

FARMERS:

Note The Many Advantages Gained By Using L. P. Gas In Your Tractors.

- Longer Engine Life
- Lower Fuel Costs
- Less Down Time
- No Road Tax On Farm Use With Ugitte L. P. Gas



Eli Good, (pictured), changed this tractor from gasoline to Ugitte Bottled Gas. The same gas many Lancaster County Housewives cook with.

For Complete Information Call or Write.

UGITE GAS COMPANY

Box 210

Ephrata, Penna. 17522

Phone 733-2207