

# MARKET NEWS REPORT

## At Lancaster Yards

### Weekly Review

February 13, 1969

**CATTLE 2200** — Compared to 1st weeks close. Slaughter Steers strong to 25 higher; Cows .50-1.00 higher. Bulls fully steady. Supply included an estimated 45 percent Slaughter Steers. 25 percent Cows and Bulls, with the balance mainly Feeder Steers.

**SLAUGHTER STEERS**—Mixed-Choice and Prime 1050-1300 lbs 29.75-30.35, Choice 900-1350 lbs 28.50-30.00, high Good and low-Choice 27.60-28.75; Good 26.00-28.00, Standard and low-Good 24.00-25.50

**SLAUGHTER HEIFERS** — Mixed-Good and Choice 750-950 lbs 25.00-26.35, Good 23.50-25.00

**COWS** — Utility and high-dressing Cutter 19.50-21.35, couple to 21.85, Cutter 18.50-19.50, Canner and low-Cutter 15.75-18.50

**BULLS** — Choice 25.75-27.25, few 27.50-27.60, Good 24.35-26.00; Utility and Commercial 23.50-26.50, few head 26.50-27.60, individual 20.20 lbs 28.60

**CALVES 400** — Vealers 2.00-4.00 lower

**VEALERS** — Choice 48.00-50.50, 2 head on Monday 51.00-52.00; Good 44.00-48.00, Standard 39.50-44.00; Utility 34.00-38.50, Cull 90-120 lbs. 26.00-33.00, 70-90 lbs 24.00-28.00

**HOGS 950** — Barrows and Gilts 50-1.00 higher

**CLOSING SALES, BARROWS AND GILTS** — US 1-2 200-230 lbs 22.50-23.00, US 2 200-240 lbs 21.50-21.85, US 2-3 200-275 lbs 20.50-21.35, US 1-2 170-190 lbs 18.00-19.00

**SHEEP 300** — Woolled Lambs steady; Ewes 1.00 higher

**WOOLED LAMBS** — Choice 60-100 lbs 28.50-30.00, Choice 115-120 lbs 26.00-27.00, Good 65-95 lbs. 26.00-28.50; Utility 22.00-26.00.

**SLAUGHTER EWES** — Utility and Good 7.00-10.00

### Auction Only

February 12, 1969

**CATTLE 781** — Compared to Monday, Slaughter Steers fully steady, Cows .50-1.00 higher; Bulls mostly steady. Supply included 13 percent Cows.

**SLAUGHTER STEERS** — High-Choice and Prime 1100-Choice 900-1350 lbs 28.60-30.00, 1300 lbs 30.00-30.75, Choice 950- (Continued on Page 3)

February 11, 1969  
**CATTLE 665** — Compared to last Tuesday, Slaughter Steers steady, instance 25 lower on Choice and Prime; Cows .50-1.00 higher; Bulls mostly steady. Supply included 30 percent Cows

**SLAUGHTER STEERS** — High-Choice and Prime 1100-Choice 900-1350 lbs 28.60-30.00, 1300 lbs 30.00-30.75, Choice 950- (Continued on Page 12)

## New Holland Auction

February 13, 1969

**CATTLE 832** — Compared to last Thursday, Slaughter Steers fully steady, although not enough high-Choice and Prime on offer to test trend; Cows 50 to mostly 1.00 higher; Bulls mostly steady. Supply included 33 percent Cows

**SLAUGHTER STEERS** — Choice 950-1350 lbs 28.75-30.10, few head high-Choice and Prime 29.75-30.50; high-Good and low-Choice 27.75-29.00, Good 26.00-28.35; Standard and low-Good 23.00-25.75.

**COWS** — Utility and high-dressing Cutter 19.25-21.85, few head 22.00-23.00, Cutter 18.50-20.25; Canner and low-Cutter 17.00-18.25.

**BULLS** — Good 24.00-26.00, couple 26.35-26.75; Utility and Commercial 23.50-25.75.

**FEEDER STEERS** — Good and Choice 785-860 lbs. 24.75-26.85.

**CALVES 328** — Vealers 1.00-2.00 higher.

**VEALERS** — Choice 50.00-54.50, Good 45.50-50.00; Standard 42.00-46.50; Utility 35.00-41.50; Cull 90-120 lbs 30.00-36.00, 70-90 lbs 26.00-32.00.

### COWS

February 12, 1969

Receipts of 121 cows and 4 bulls sold steady. Holstein 375-605; Other breeds 300-350; Bulls 175-260.

### HORSES

February 10, 1969

Receipts of 358 horses sold stronger. Mules (single) 150-370, (pairs) 450-890; Work horses (single) 150-280, (pairs) 475-770, Riding horses 95-300; Driving horses 115-310; Pony (mares) 20-300 (geldings) 20-25; killers 8-9.

### HOGS

February 10, 1969

Receipts of 1045 hogs sold steady. Retail 22-23.50; Wholesale 21.25-21.75; Heavyweights 20.25-21.25; Sows 14.25-16.50; Roars 11.50-14.

### CALVES

Receipts of 99 calves sold steady. Choice and Prime 47-51.50; Good and L. Choice 42-46.50; Standard 37-41.50; Common 25-36.50.

## Chicago Cattle Weekly Review

**CATTLE** — Compared with last weeks close, slaughter steers and heifers steady, cows 50-1.00 higher, bulls strong.

Local receipts 77 percent, slaughter steers, 18 percent, heifers and the balance mainly cows. Overall finish of slaughter steers not quite as attractive, as last week with 10 percent (Continued on Page 12)

## FUTURES TRADING

(Closing bids as of Thursday, February 13, 1969)

	Midwestern Live Cattle — Chicago	Live Hogs — Chicago	Maine Potatoes — New York
February	29.10	20.65	
March			2.55
April	28.00	19.85	2.76
May			3.26
June	27.82	21.00	
August	28.05	21.00	
October	27.85		
November			2.41
December	27.75		

a-asked b-bid n-nominal

Trend Cattle are higher; Hogs are higher; and Potatoes are lower

**AUCTIONS** makes the difference in marketing livestock!

**New Holland** makes the difference in auctions!

MONDAY 10:30 A.M. — FAT HOGS and SHOATS  
2:30 P.M. — FAT STEERS, BULLS, COWS & VEAL HORSE SALE — MONDAY at 10:00 A.M.

DAIRY SALE — WEDNESDAY at 12:30 P.M.  
FAT STEERS, BULLS, COWS & VEAL — THURSDAY at 12:30 P.M.

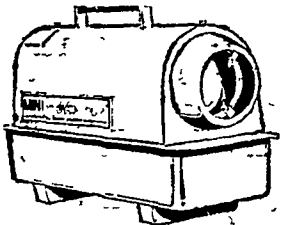
**NEW HOLLAND SALES STABLES, INC.**

New Holland, Penna.

Abram W. Diffenbach, Manager Phone (717) 354-2194

**NEW!**

**The Mini-Furnace Portable Heater**



The cold weather answer for building contractors, farmers, sportsmen, warehousemen, outside contractors... anyone who needs high volume circulating heat around the clock. A truly powerful portable heater for its size. Gives you full heat instantly. Runs over 12 hours on one tankful of low cost kerosene or #1 fuel oil. Under 30 inches in length, weighs 41 pounds and easily carried in the trunk of your car.

You can own this heater for

ONLY \$6<sup>20</sup> per mo.

Sales and Service

**GEHMAN BROS.**

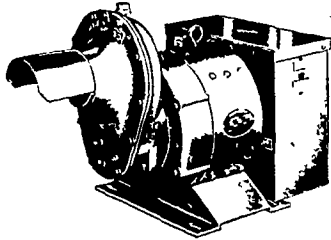
1 Mile North of Terre Hill on Route 897 East Earl, R. D. 1, Penna.

Phone 215-445-6272

**WINPOWER**

**TRACTOR DRIVEN ALTERNATORS**

**NO** COMMUTATOR or DC BRUSHES TO CREATE SERVICE PROBLEMS



- Superior Motor Starting Ability
- Close Voltage Regulation
- Instantaneous Recovery To Rated Voltage With Sudden Load Application
- Electronic Rectification

**WINPOWER**

1800 RPM  
LOW SPEED  
HEAVY DUTY

INSIST on a WINPOWER DEMONSTRATION at YOUR Farm

Before You Buy ANY Tractor Driven Alternator

DEMONSTRATED, INSTALLED AND SERVICED BY

**ELECTRIC MOTOR SERVICE & SALES**

ELECTRIC MOTOR GENERATOR AND POWER TOOL SPECIALISTS

Next to Gleister Shopping Center

EPHRATA, PA. HWY. 222, Box 222 Area Code 717-733-7911



## VINTAGE SALES STABLES, Inc.

PARADISE, PENNA.

BULLS, STEERS, BUTCHER COWS, HOGS, LAMBS AND VEAL CALVES SOLD ON COMMISSION

SALE EVERY TUESDAY 1:30 P.M.

FAT HOGS AND FEEDER PIG SALE EVERY SATURDAY AT 10 A.M.

For Marketing Information Phone Area Code 717-442-4181

Box 100 Paradise, Pa. 10 mi. East of Lancaster on Rt. 30

Kenneth E. Hershey, Sales Manager

## IF YOU PLANT CORN

YOU'LL WANT THIS

**Ortho Unipel Starter Fertilizer 13-34-10**



- Easy to handle in 50 lb. bags...
- Proven performance...
- Highest available analysis...
- Convenient to store and use...
- Most uniform pellet...
- Uniform early response...
- Higher yields

Also available in bags or bulk

20-10-10, 16-16-16, 10-20-20  
T.M. Reg. U.S. Pat. off. Ortho and Unipel

Contact us now for Early season prices and liberal discounts.

FOR MORE INFORMATION CONTACT

**P. L. ROHRER & BRO., INC.**

Smoketown, Pa.

397-3539