

# SPECIAL SALE

AT THE

## BLACK & WHITE HOLSTEIN FARM

1500 Rohrerstown Road, Lancaster. Ph. 717-569-2106

**WEDNESDAY, FEBRUARY 12, 1969**  
7:30 P.M. Sharp

Directly across the road from the Comet Drive-In Theatre. Route 230 By-Pass, just west of Lancaster

Complete herd of 65 head of Registered and Grade Holstein and Ayrshire cows, TB and Bang's Certified.

Being sold due to original owner being forced to move.

42 REGISTERED & GRADE HOLSTEINS

23 REGISTERED AYRSHIRES

29 cows fresh or springing, 21 cows in various stages of lactation, 15 heifers bred or of breeding age

Herd is on DHIA record with average 38 percent test with some with following records 17539M, 625F; 17528M, 755F; 16389M, 690F, 16200M, 562F, 15266M, 15039M

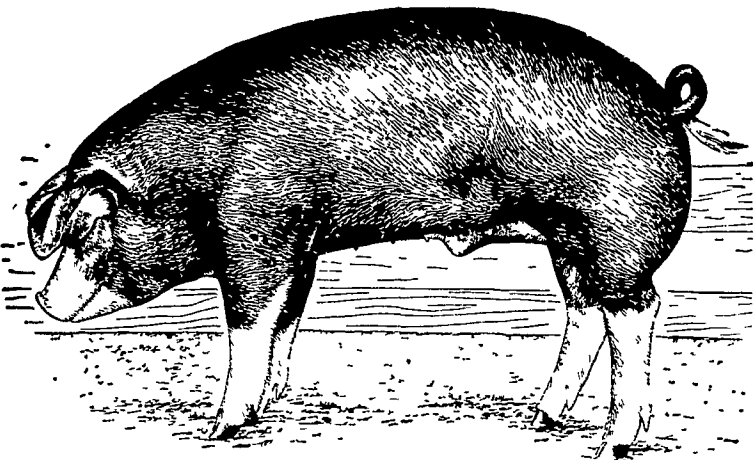
Health charts furnished at time of sale Cows can be inspected week of sale at the above location.

CHARLES C. MYERS, Owner

Abe Diffenbach, Auctioneer  
Henry Kettering, Pedigrees

Bank Financing available prior to time of Sale.

## Ask Your Beacon Dealer About The NEW 1969 BEACON LIFE CYCLE SWINE FEEDING PROGRAM



- Meets full requirements of your breeding herd
- Gets market pigs from birth to butcher with maximum gains in minimum time
- Offers flexibility to make best use of your own grains
- Is designed for feeding economy and marketing profitability

This is a full Life Cycle Feeding Program designed to help pork producers make maximum profits. For full details and a feeding program tailor made to your own operation, call us today.



**GEHMAN FEED  
MILL, INC.**  
Denver

**O. KENNETH  
McCRACKEN**  
Manheim

**I. B. GRAYBILL  
& SON**  
Strasburg

**BOMBERGER'S  
STORE**  
Elm

**EARL SAUDER, INC.**  
New Holland

**H. JACOB HOOBER**  
Intercourse

### Mail Box Market

For Sale — Pups from Border Collie mother with Retriever father. Easy to train, loyal to children, good watch dog, 2 left at \$10. each. Elwood Bicknell, Box 133, R. D. #3, Oxford, Pa.

Wanted — Odd jobs to do with my own chin saw Trees cut to any length desired, reasonable. Ph. Mountville 285-5649

For Sale—Alfalfa hay with rain Will sell large or small amounts Also steel wheel manure spreader in A-1 condition. Call Area Code 215 267-5796.

### Mail Box Market

Wants to Buy—Ez-Flow fertilizer and Lime spreader, must be in good condition, state size and price Write or call Elam Z. Zimmerman, 1 1/2 mi N.W. of Lincoln along Wood Corner Road, Lititz R#4. Pa Phone 733-4466.

For Sale—D14 Allis Chalmers tractor and a 149 x 28 6 ply tractor tire; Also 800 Babcock pullets, all vaccinations Phone Elizabethtown 367-2033

Lancaster Farming, Saturday, February 8, 1969—9

### Mail Box Market

For Sale—Oliver 60 with cultivator; Oliver Superior 16 Disc grain drill; roof for a pickup; Egg-O-Matic grader and candle Phone 354-9111.

### Sale Register

WED. FEB 26 — 9 A.M., Martin's Sale Barn, Blue Ball, Pa. Farm Equipment. We sell on commission. Paul Z. Martin.

SAT. MAR. 1, 1 P.M. sharp — Public Sale of Valuable Real Estate, Farm Machinery, Personal Property at R.D. #1, Brogueville, Pa. in Chanceford Twp Sale by Harold J. Walker, Executor of the David H. Walker

SAT. MAR. 1—Penna Landrace Swine Breeders Association Show and Sale, Pa Farm Show Building, Small Arena, Harrisburg, Pa. Show 10 AM Sale 1 P.M.

SAT. MAR. 1—Another All Day Community - Farm Sale at Georgetown on Rt. 896, 6 mi. SE of Strasburg Sponsored by Bart Twp. Fire Co. (Watch for large ad.)

TUES. MARCH 4 — 12 P.M. Public Sale of Farm Equipment located 2 mi. East of Mt. Joy along Newcomer Road. Sale by Paul S. Miller.

SAT. MARCH 8 — 10 A.M. Annual Spring Sale of Livestock, Hogs, Farm Equipment, Tools, and Household goods by Samuel Schlaugh and Sons, between Alleghynville and Maple Grove Park, Berks County, Pa.

WED. MARCH 12 — 8:30 A.M. Large annual all-day spring farm equipment sale. We sell on commission. Paul Z. Martin, Blue Ball, Pa.

FRI FEB. 14—7:30 P.M. Public Auction of 60 Registered & Top Grade Holstein Dairy Cattle in the dairy barn arena at the Aberdeen Sales Company in Churchville, Harford Co., Md. Terms by Aberdeen Sales Company.

SAT FEB. 15—10:30 A.M. Public Sale of Machinery and Tools located one mi E. of Atglen, 2 1/2 mi. W of Parkesburg, on Upper Valley Road, West Sadsbury Twp, Chester County. Terms by order of Paul Grube for Amos Grube Estate

SAT. MAR. 15—Public Sale of Farm Equipment and Household Goods located along Rt 897, 1 mi. N of Fivepointville. Terms by Aaron H Martin.

SAT. MARCH 15—Public Sale of Farm Equipment, located 1/4 mi. N. of Leola on North Maple Ave., Leola, Terms by Leroy N. Eberly.

SAT MARCH 22—Public Sale of Farm Machinery and Household Goods, located 5 mi. N. of Manheim on the corner of Cider Press Road and Shoemaker Road, Manheim R. D. #4, Terms by Stanley G Greiner.

SAT. FEB. 22—10 AM Public Sale of complete dispersal of Farm Machinery, Dairy and Household Goods located 4 mi. from Elizabethtown. Terms by Lloyd L. Keener.

WED MARCH 26 — 9 00 A.M. Martin's Sale Barn, Blue Ball, Pa Farm Equipment We sell on commission. Paul Z. Martin.

# ROHRER'S CAN SUPPLY THESE Top Recommended VARIETIES

- Cert. Cayuga Alfalfa
- Cert. Saranac Alfalfa
- Cert. DuPuits Alfalfa
- Cert. "Alfa" Alfalfa
- Cert. Vernal Alfalfa
- Cert. Irquois Alfalfa
- Cert. Buffalo Alfalfa
- Cert. Pennscott Red Clover
- Pennsylvania Red Clover
- Pennlate Orchard Grass
- Viking Trefoil
- Climax Timothy
- Cert. Russel Oats
- Cert. Orbit Oats
- Cert. Garry Oats

Cert. Maine Grown Seed Potatoes  
Dekalb Corn - - - SUDAX

\* Alfalfa & Red Clover available Pre-inoculated

Send For Free Catalog

## P. L. ROHRER & BRO., INC.

SMOKETOWN Ph. Lanc. 397-3539

# to streamline BUY



you can add more cows when you  
• • • MECHANIZE WORK  
• • • MODERNIZE HOUSING  
with

**A STARLINE BARN CLEANER**  
Fully automatic endless chain models or the economical Roll-a-way.

**STARLINE BARN EQUIPMENT**  
• VENTILATORS • WINDOWS  
• FANS • STALLS  
• WATER BOWLS

Ask for a FREE Starline-Engineered barn plan

**L. H. Brubaker  
Inc.**  
350 Strasburg Pike  
Lancaster Pa.  
397-5179

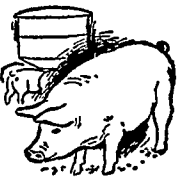
**Harold Brandt**  
E High St  
Elizabethtown, Pa.  
367-1221

**Mellinger Tire Service**  
525 W Main St  
New Holland, Pa.  
354-2391

**Ralph Zeager**  
S Church St  
Quarryville Pa.  
786-7225

**L. H. Brubaker**  
R D. #3  
Lititz, Pa  
626-7766

SELL ★  
YOUR  
BUTCHER  
HOGS  
DIRECT



TO  
**ARMOUR CO.**  
READING, PA.

We will be glad to look at your hogs & bid you.  
CALL AL SHAFFER AT  
376-2941. Evenings 779-3847