

● **Have You Heard?**  
(Continued from Page 15)

main in original wrapping of plastic, but remember to loosen the plastic to allow air to circulate.

Store all fresh meat at once in the coldest part of the refrigerator or in the compartment designed for meat storage

If storing leftover meat, refrigerate meat at once or cool quickly, then refrigerate

Store milk, cream, and cheese in tightly covered containers

and place in the coldest section of your refrigerator.

Cover eggs and store in the main section of your refrigerator. Egg shells are porous and will absorb odors if left uncovered.

To store egg yolks, place in a covered container with some cold water to keep them from drying out. They will store well for two or three days.

Most fresh vegetables need refrigeration but some keep better when stored outside the refrigerator such as potatoes and onion.

## COMPLETE FARM WIRING SERVICE

A Qualified Staff Of Electricians Can Wire

- COMPLETE ENTRANCE SERVICE
- ELECTRICAL EQUIPMENT
- BARN or POULTRY HOUSE

Ask for FREE estimate

### MERCURY VAPOR YARD LIGHTS

Turns itself on and off Acts as a nighttime accident preventative.  
175 watts, 120 volt \$58.85  
175 watts, 240 volt 57.14

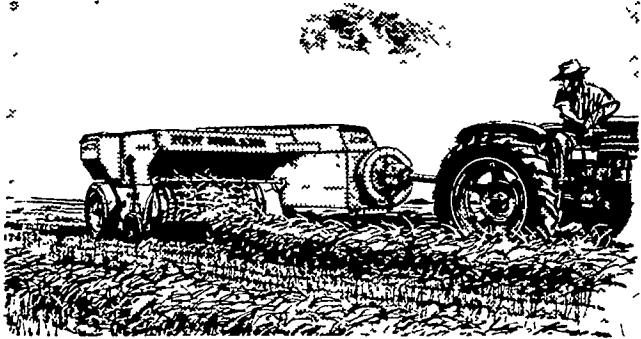
"Dusk-to-Dawn"  
DESIGNED FOR ALL  
YOUR LIGHTING  
JOBS



## BEE-LINE SUPPLY CENTER

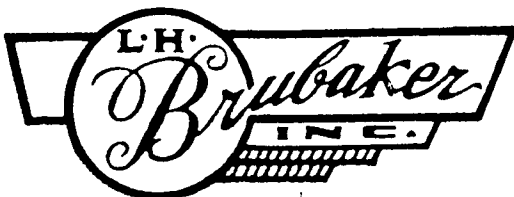
1027 DILLERVILLE ROAD, LANCASTER  
24 HOUR SERVICE DAILY — PH. 717-397-4761

**Rugged! Rugged!**  
**Built extra-tough for**  
**extra-rough baling!**



The New Holland Hayliner® 275 is beefed up in every vital area to stand up under punishment in sorghum, sudan hybrids, cane and other tough-to-bale crops. The bale chamber is extra-heavy, extra-rugged. The knotters and twister surfaces are hardened in the vital wear areas. You'll put up thousands of 14" x 18" bales—square, tightly-tied bales—without having to worry about repairs. The Super-Sweep pickup with 120 curved teeth gets the short, fine hay other pickups leave behind. This is the baler for the man who has to keep going! Stop in now or call for a demonstration. Remember. New Holland Purchase Plan financing makes it easy for you to own the best!

**NEW HOLLAND**



R. D. 3, Lititz, Pa.  
350 Strasburg Pike, Lancaster

Phone: Lanc. 397-5179 — Strasburg 687-6002 — Lititz 626-7766

● **Farm Women**  
(Continued from Page 15)

Mrs. Richard Shellenberger, secretary; Mrs. Brenneman, treasurer. Mrs. Shellenberger is song leader and Mrs. Gerald Erb and Mrs. Robert Mowrer are pianists.

Chairmen serving the year are Mrs. Erb, program; Mrs. Jay Bixler, membership; Mrs. Joseph Russell, sunshine; Mrs. J. Stanley Newcomer, ways and means; auditors Mrs. Edward Hedgeperth and Mrs. Ruhl. Mrs. John Hiestand is reporter.

The program chairman outlined the programs for 1969. The next meeting, Feb. 17, will feature "First Aid in the Farm Home" at the residence of Mrs. Clayton Ranck, Marietta R1.

Mrs. Walter Mowrer, Columbia R1, will be hostess at the March 17 meeting with a demonstration of decorating Easter eggs.

Other meetings planned are April 21 "Interior Decorating" at the home of Mrs. Dale Hiestand, Bainbridge R1; May 19, "Cake Francies" in the home of Mrs. Joseph Russell III; June 16, "Child Talk" in the home of Mrs. Gerald Erb, Mount Joy R1; July 20, a Sunday afternoon

**Refuse Unordered Items In Your Mail**

Unordered greeting cards, men's ties, pen and pencil sets, key rings, and other small items may be in your mailbox any day. A bill may come later or a plea for your dollars that are designated for a worthy cause. But you're under no obligation to accept or pay for such items you did not order, says Helen E. Bell, extension home management specialist of The Pennsylvania State University.

You can refuse the package. Just write "refused" on the unopened package and take it back to the postoffice. You don't have to see the mailman at the door.

If you opened the package

picnic for members and families; Aug. 18, a splash social; Sept. 15, a square dance at the home of Mr. and Mrs. Ronald Ober; Oct. 20, the group will make Christmas wreaths.

Society 29 will be entertained by Society 27 on Nov. 17. On Dec. 15, a dinner meeting held in the home of Mrs. Abram Groff, Mount Joy R1, will climax the first year of activities for Society 29.

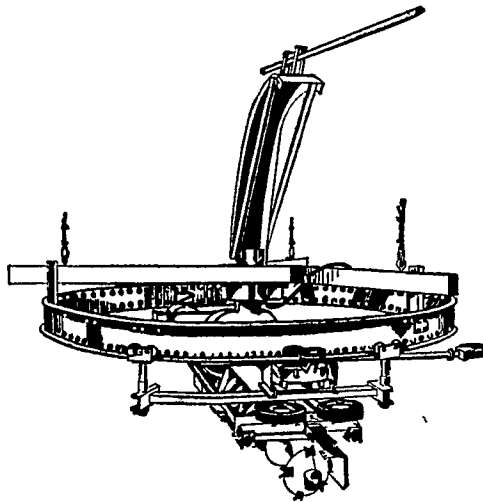
before you realized what it was, you still don't have to pay for the product that's inside. Put the item back in the package, rewrap it, and write "refused" on the outside, then return the package to the postoffice.

You're under no legal obligation to even return such unordered merchandise as long as you don't use it, according to Miss Bell. But, to discourage further shipment by such companies, it's a good idea to mark the package "refused" and return it to the sender. If you do this, companies may take the hint that you don't want to be bothered with items you didn't ask for in the first place.

**Repair Machinery**

This is a good time of the year to give some attention to the repair of farm machinery. Any work needed on the tractor or other implements should be done before the rush of spring work. Many farm machinery service concerns will give special discounts for work done during the winter months. Don't wait until the machinery is needed to get it out and inspect the repair work that needs to be done.

## FEWER TRIPS UP THE SILO



You do less climbing when you use a Jamesway Volumatic silage distributor-unloader because of its simple operation. No weights to adjust. No drive drums to manhandle. No need to ride the shroud to keep the auger cutting through frozen silage.

Unique Power Circle Drive and true Three-Point Suspension give you dependable operation, eliminate unnecessary trips up the silo to make adjustments.

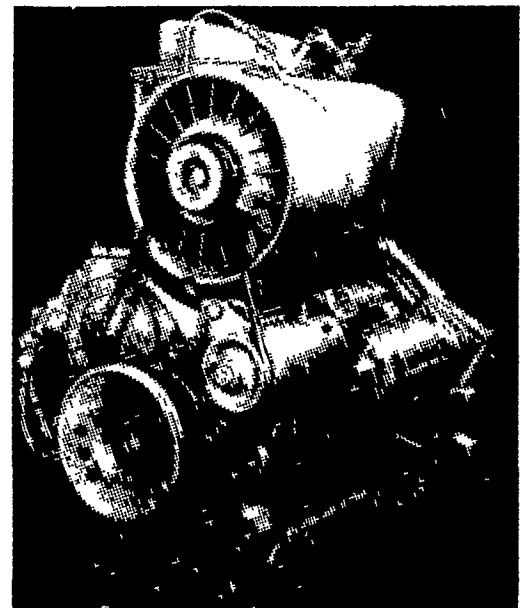
## LANDIS BROS., INC.

1305 Manheim Pike, Lancaster, Pa. 17601  
Phone 393-3906

## DEUTZ

Is the worlds oldest and largest manufacturer of air-cooled diesels. The Deutz air-cooling principle is far advanced over water-cooled and other air-cooled diesel engines.

**Stauffer Diesel provides the following proven benefits along with each Deutz engine:**



1. We sell & service all Deutz engines from 5 - 300 BHP sizes.
2. Permanent home of Deutz engines in Penna. since 1955.
3. Free installation in most cases.
4. 24 Hour emergency service.
5. All work guaranteed.
6. Satisfaction guaranteed.

## STAUFFER Diesel Refrigeration, Inc.

Hatville Rd., Gordonville R. D. 1, Pa. — Phone 768-8531