

MARKET NEWS REPORT

At Lancaster Yards

Weekly Review

January 30, 1969

CATTLE 1800 — Compared to last weeks close, Choice and Prime Slaughter Steers 50-1.00 higher, other grades steady to strong; Cows 25-50 higher. Bulls steady to 50 higher; Feeder Steers fully steady. Supply included an estimated 55 percent Slaughter Steers, 20 percent Cows and Bulls, with the balance mainly Feeder Steers.

SLAUGHTER STEERS — High-Choice and Prime 1125-1325 lbs 30 50-31 75; Choice 1000-1420 lbs 29 00-31 10, few on Monday 28 50 29 00; high Good and low-Choice 27 75-29 00; Good 25 65-28 25; Standard and low-Good 23 25-25 25

SLAUGHTER HEIFERS — Good 700 950 lbs 23 00-24 50
COWS — Utility and high-dressing Cutter 18 50-20 25, few 20 35 21 00; Cutter 17 00-18 75; Canner and low-Cutter 15 00-17 25

BULLS — Choice 25 50-26 00, few head 26 50-27 00; Good 23 50 25 60; Utility and Commercial 23 25-26 00, few head 26 50-27 85, with an individual 1950 lbs at 28 60.

FEEDER STEERS — One lot mixed-Choice and Prime 475 pounds 32 50; Choice 495-550 30 00-31 00; Good 430-575 lbs 26 75-28 25; load Choice 1050-1200 lbs with Good slaughter finish 27 00 27 50

CALVES 350 — Vealers 1.00-3 00 higher

VEALERS — Choice 49 00-52 50; Good 46 00-51 00; Standard 40 00-46 00; Utility 35 00-41 00; Cull 90-120 lbs 28 50-34 00, 70-90 lbs 25 00-30 00

HOGS 850 — Barrows and 200-235 lbs. 21 75-22 25

CLOSING SALES, BAR-
(Continued on Page 3)

Auction Only

January 29, 1969

CATTLE 477 — Choice and Prime Slaughter Steers 50-1.00 higher, other Slaughter Steers steady to strong; Cows 25-50 higher; Bulls steady to 50 higher

SLAUGHTER STEERS — High-Choice and Prime 1125-1325 lbs 31 25-31 75; Choice 1000-1350 lbs 29 00-31 10, high-Good and low-Choice 28 00-29 -
(Continued on Page 3)

Vintage Auction

January 28, 1969

CATTLE 623 — Compared to last Tuesday, Slaughter Steers steady, instances 25 higher; Cows 75 1 00 higher; Bulls fully steady. Supply included 28 percent Cows.

SLAUGHTER STEERS — Choice 950-1325 lbs. 28 85-30 85; high-Choice and Prime 1075-1300 lbs 30 75-31 75; high-Good and low-Choice 27 50-29 10; Good
(Continued on Page 3)

New Holland Auction

January 30, 1969

CATTLE 820 — Compared to last Thursday, Slaughter Steers unevenly steady, instances 25 higher on Choice and low-Prime; Cows 50-1 00 higher; Bulls strong to 50 higher. Supply included 30 percent Cows.

SLAUGHTER STEERS — Choice 975-1325 lbs 28 85-30 75, few high-Choice and low-Prime 30 75-31 35, high-Good and low-Choice 28 00 29 25; Good 25 75-28 35; Standard and low-Good 23 00-25 50

SLAUGHTER HEIFERS — Good 760-900 lbs 22 50-25 00

COWS — Utility and high-dressing Cutter 18 50-21 00, few 21 25-21 85; Cutter 17 50-19 00; Canner and low-Cutter 16 50-17 50

BULLS — Choice 26 00-27 50, few head 27 60-27 85; Good 24 35 25 85; Utility and Commercial 24 00-26 00, few 26 10-26 60

CALVES 336 — Vealers fully steady.

VEALERS — Choice 50 00-53 00; Good 46 00-50 00; Standard 42 50-46 50, Utility 36 00-42 00; Cull 90-120 lbs. 30 00-34 00, 70-90 lbs. 27 00-30 00.

SHEEP — None

COWS

January 29, 1969

Receipts of 135 cows sold

steady Holstein 450-1000; Other breeds 325-400.

HORSES

January 27, 1969

Receipts of 461 horses sold stronger. Mules (single) 150-490, (pairs) 550-970; Work horses (single) 170 275, (pairs) 450-680; Riding horses 100-305; Driving horses 95-290; Pony Mares 20-30; Pony Geldings 15-25, Killers 8-9.

Chicago Cattle Weekly Review

CATTLE — Compared with last weeks close, slaughter steers strong to 50 higher, heifers fully steady, cows 1.00-1.50 higher and currently the highest since last July, bulls strong.

Local receipts consisted of 75 percent slaughter steers, 21 percent heifers and the balance mainly cows. Overall finish of slaughter steers slightly more attractive than last week and 12 percent Prime and 75 percent Choice. This compares with 11 percent Prime and 74 percent Choice last week, and 10 percent Prime and 77 percent Choice a year ago. Ave. cost and weight of slaughter steers were estimated at 29.40, highest since March, 1966, and 1150 lbs. com-

(Continued on Page 3)

FUTURES TRADING

(Closing bids as of Thursday, January 30, 1969)

	Midwestern Live Cattle — Chicago	Live Hogs — Chicago	Maine Potatoes — New York
February	28.40	18.95-b	
March			2.74
April	27.40	19.00	2.96
May			3.51
June	26.95	20.27	
August	27.10		
October	27.00		
November			2.43
December	26.95		

a-asked b-bid n-nominal

Trend: Cattle are lower; Hogs are lower and Potatoes are higher.

AUCTIONS makes the difference in marketing livestock!

New Holland makes the difference in auctions!

MONDAY 10:30 A.M. — FAT HOGS and SHOATS
2:30 P.M. — FAT STEERS, BULLS, COWS & VEAL
HORSE SALE — MONDAY at 10:00 A.M.

DAIRY SALE — WEDNESDAY at 12:30 P.M.
FAT STEERS, BULLS, COWS & VEAL—THURSDAY at 12:30 P.M.

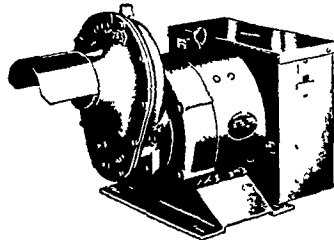
NEW HOLLAND SALES STABLES, INC.

New Holland, Penna.
Abram W. Diffenbach, Manager Phone (717) 354-2194

WINPOWER

TRACTOR DRIVEN ALTERNATORS

NO COMMUTATOR or DC BRUSHES TO CREATE SERVICE PROBLEMS



- Superior Motor Starting Ability
- Close Voltage Regulation
- Instantaneous Recovery To Rated Voltage With Sudden Load Application
- Electronic Rectification.

INSIST on a WINPOWER DEMONSTRATION at YOUR Farm Before You Buy ANY Tractor Driven Alternator

WINPOWER
1800 RPM
LOW SPEED
HEAVY DUTY

DEMONSTRATED, INSTALLED AND SERVICED BY

ELECTRIC MOTOR SERVICE & SALES

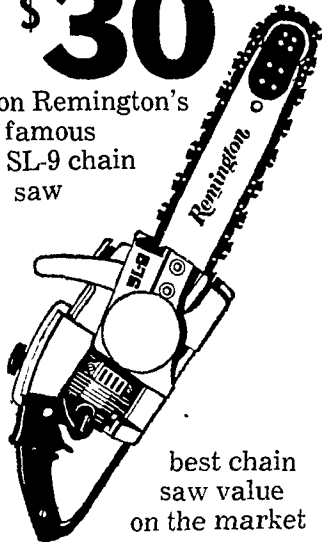
ELECTRIC MOTOR GENERATOR AND POWER TOOL SPECIALISTS

Next to Cleister Shopping Center

EPHRATA, PA. 17324 Phone 717 733 7911

SAVE \$30

on Remington's famous SL-9 chain saw



best chain saw value on the market

SEE IT TODAY!

Remington

DUPONT

GEHMAN BROS.

We specialize in chain saws

SALES & SERVICE

1 Mi North of Terre Hill on Rt 897

East Earl R D 1

Phone 443 6272

VINTAGE SALES STABLES, Inc.

PARADISE, PENNA.

BULLS, STEERS, BUTCHER COWS, HOGS, LAMBS AND VEAL CALVES SOLD ON COMMISSION

SALE EVERY TUESDAY 1:30 P.M.

FAT HOGS AND FEEDER PIG SALE EVERY SATURDAY AT 10 A.M.

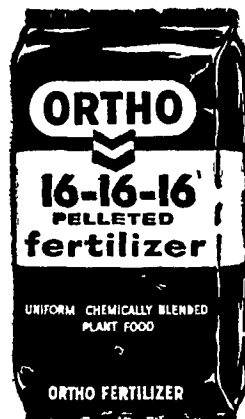
For Marketing Information Phone Area Code 717-442-4181

Box 100 Paradise, Pa. 10 mi. East of Lancaster on Rt. 30

Kenneth E. Hershey, Sales Manager

ORDER NOW & SAVE

on ORTHO UNIPEL FERTILIZER



The unique Ortho Manufacturing process gives you two different forms of nitrogen and phosphate — fast acting and long lasting.

Available in the following analysis 16-16-16, 20-10-10, 10-20-20, 13-34-10. Available in bags and bulk.

CONTACT US NOW FOR EARLY SEASON PRICES AND LIBERAL DISCOUNTS.

T.M. Reg. U.S. Pat. Off. Ortho and Unipel

P. L. ROHRER & BRO., INC.

Smoketown, Pa.

Phone 397-3339