

MARKET NEWS REPORT

At Lancaster Yards

Weekly Review January 20, 1969

CATTLE 2300 — Compared to last weeks close, Slaughter Steers 25-50 higher, instances 75 higher on weights under 1200 lbs; Cows 25-75 higher, Good and Choice Bulls steady, Utility and Commercial 50 lower Supply included an estimated 55 percent Slaughter Steers, 25 percent Cows and Bulls, with the balance mainly Feeder Steers

SLAUGHTER STEERS — Mixed-Choice and Prime 1100-1250 lbs 30 25-30 60, Choice 950-1200 lbs. 29 00 30 50, 1250-1400 lbs 28 10-30 10; high-Good and low-Choice 27 50-28 60; Good 25-50-28 00

SLAUGHTER HEIFERS — Choice 750-800 lbs 26 50 26 75; Good 750-950 lbs 23 50 25 10

COWS — Utility and high-dressing Cutter 18 50-19 75, few 20 00-20 10; Cutter 16 50-18 75, Canner and low-Cutter 15 00-16 75

BULLS — Choice 25 50-26 60, several on Monday 26 75-27 50, Good 23 25-25 75; Utility and Commercial 23 00 25 50, few mainly on Monday 25 75-27 00

CALVES 400—Vealers steady to 1 00 higher.

VEALERS — Choice 47 00-49 00, couple 50 00, Good 43 00-47 00, Standard 37 50-44 00; Utility 32 50-38 50; Cull 90-120 lbs 28 00-32 00, 70-90 lbs 25 00 28 00

HOGS 1100—Barrows and gilts strong to 50 higher, sows scarce (Continued on Page 3)

Auction Only January 22, 1969

CATTLE 619 — Compared to Monday Slaughter Steers uneven, weights under 1200 lbs. steady to 50 higher, weights over 1200 lbs about steady; Cows 25-75 higher; Bulls steady to 50 lower. Supply included 65 percent Slaughter Steers

SLAUGHTER STEERS — Choice 950-1250 lbs 29 00-30 60, few mixed-Choice and Prime 30 25-30.60; Choice 1250-1400 lbs (Continued on Page 3)

Vintage Auction

January 21, 1969

CATTLE 695 — Compared to last Tuesday Slaughter Steers 25-50 higher; Cows 25 to fully 50 higher. Bulls mostly steady Supply included 32 percent Cows.

SLAUGHTER STEERS — High-Choice and low-Prime 1050-1325 lbs 30 50-31 35; Choice 1000-1350 lbs. 28 85-30.75; high-Good and low-Choice 27 50-29 10; Good 26 00-28 50, Standard and low-Good 23 00-25 50

COWS — Utility and high-dressing Cutter 17 50-19 85, sev- (Continued on Page 3)

New Holland Auction

January 23, 1969

CATTLE 2300 — Compared to last Thursday, Slaughter Steers and Cows 25-50 higher; Bulls steady, instances 50 higher on Choice. Supply included 42 percent Cows.

SLAUGHTER STEERS — Choice 900-1300 lbs. 28 75-30 50; few high-Choice and Prime 30-50-31 10; high-Good and low-Choice 27 75 29 00; Good 26 00-28 25; few Standard 24 00-25 50.

COWS — Utility and high-dressing Cutter 17 75-19 75, few 20 00-20 50; Cutter 17 25-18 75, Canner and low-Cutter 15 50-17-10.

BULLS — Choice 25 50-26-50, few head 27.50-27.85, Good 23 75-25 75; Utility and Commercial 23 50-25 50, several 25 60-26 75

FEEDER STEERS — Choice 700-830 lbs. 26 50-27 60, Good 660-970 lbs 24 25-24 75

CALVES 307 — Vealers 1 00-3 00 higher.

VEALERS — Choice 50 00-54 00, Good 46 00-50 50; Standard 40 00 45 50; Utility 34 00-40-00; Cull 90-120 lbs 29 00-34 00, 70-90 lbs. 27 00-31 00.

FEEDER CALVES — Good & Choice 260-320 lbs Steers 28 00-28 60; Good and Choice 270 lbs Heifers 23 75.

SHEEP 4 — No market test.

COWS

January 22, 1969

Receipts of 80 cows and two bulls sold stronger on fresh cows. Holstein 425-590; Guernsey (Continued on Page 5)

Chicago Cattle Weekly Review

CATTLE — Compared with last weeks close, slaughter steers and heifers mostly steady, cows 50-75 higher, bulls unchanged. Local receipts consisted of near 73 percent slaughter steers, 23 percent heifers and the balance (Continued on Page 5)

FUTURES TRADING

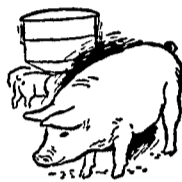
Closing bids as of Thursday, January 23, 1969

	Midwestern Live Cattle — Chicago	Live Hogs — Chicago	Maine Potatoes — New York
February	28.42	20.00	
March			2.73
April	27.47	19.00	2.92
May			3.44
June	26.87	20.50	
August	27.02		
October	26.95		
November			2.43
December	26.85		

a-asked b-bid n-nominal

Trend Cattle are stronger; Hogs are stronger; Potatoes are lower.

SELL YOUR BUTCHER HOGS DIRECT



ARMOUR CO.

READING, PA.

We will be glad to look at your hogs & bid you.

CALL AL SHAFFER AT 376-2941. Evenings 779-3847

VINTAGE SALES STABLES, Inc.

PARADISE, PENNA.

BULLS, STEERS, BUTCHER COWS, HOGS, LAMBS AND VEAL CALVES SOLD ON COMMISSION

SALE EVERY TUESDAY 1:30 P.M.

FAT HOGS AND FEEDER PIG SALE EVERY SATURDAY AT 10 A.M.

For Marketing Information
Phone Area Code 717-442-4181

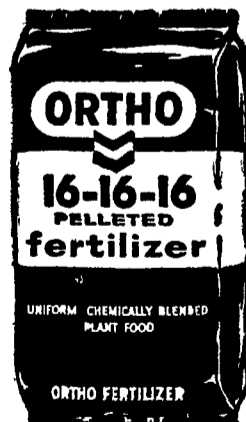
Box 100 Paradise, Pa.
10 mi East of Lancaster on Rt. 30

Kenneth E. Hershey, Sales Manager

ORDER NOW & SAVE on ORTHO UNIPEL FERTILIZER

The unique Ortho Manufacturing process gives you two different forms of nitrogen and phosphate — fast acting and long lasting.

Available in the following analysis 16-16-16, 20-10-10, 10-20-20, 13-34-10. Available in bags and bulk.



CONTACT US NOW FOR EARLY SEASON PRICES AND LIBERAL DISCOUNTS.

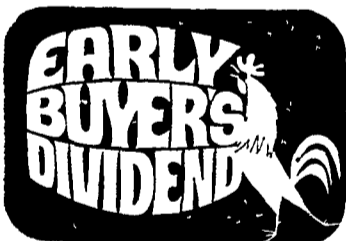
T.M. Reg. U.S. Pat. Off. Ortho and Unipel

P. L. ROHRER & BRO., INC.

Smoketown, Pa.

Phone 397-3539

BUY NOW
earn a cash dividend through



This special pre-season program pays you cash for buying early. The amount you get depends on the machine you buy—and when you buy it. The earlier you buy, the bigger your dividend. Program starts November 1, 1968, and goes through February 28, 1969.

Eligible machines include: Automatic Bale Wagons and Stack Retrievers • Balers • Combines • Crop-Choppers • Forage Blowers • Forage Boxes and Crop-Carriers • Forage Harvesters • Hay Conditioners • Mower-Conditioners • Mowers • Rakes • Self-Propelled Windrowers.

Program applies to new machines only. Stop in soon for complete details.

NEW HOLLAND
DIVISION OF SPERRY RAND

L. H. BRUBAKER

R. D. 3, Lititz, Pa.
350 Strasburg Pike, Lanc.
Phone: Lanc. 397-5179
Strasburg 687-6002
Lititz 626-7766

AUCTIONS makes the difference in marketing livestock!

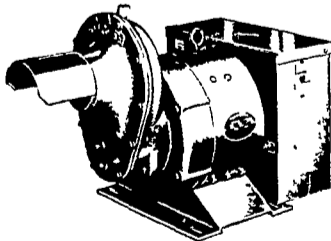
New Holland makes the difference in auctions!

MONDAY 10:30 A.M. — FAT HOGS and SHOATS
2.30 P.M. — FAT STEERS, BULLS, COWS & VEAL
HORSE SALE — MONDAY at 10:00 A.M.
DAIRY SALE — WEDNESDAY at 12:30 P.M.
FAT STEERS, BULLS, COWS & VEAL—THURSDAY at 12.30 P.M.

NEW HOLLAND SALES STABLES, INC.
New Holland, Penna
Abram W Diffenbach, Manager Phone (717) 354-2194

WINPOWER TRACTOR DRIVEN ALTERNATORS

NO COMMUTATOR or DC BRUSHES TO CREATE SERVICE PROBLEMS



- Superior Motor Starting Ability
- Close Voltage Regulation
- Instantaneous Recovery To Rated Voltage With Sudden Load Application
- Electronic Rectification

INSIST on a WINPOWER DEMONSTRATION at YOUR Farm Before You Buy ANY Tractor Driven Alternator



DEMONSTRATED, INSTALLED AND SERVICED BY

ELECTRIC MOTOR SERVICE & SALES

ELECTRIC MOTOR GENERATOR AND POWER TOOL SPECIALISTS

Next to Coister Shopping Center

EPHRATA, PA. 24 N. Reading Road - Jct. 722 Area Code 717 733 7911