

MARKET NEWS REPORT

At Lancaster Yards

Weekly Review

January 17, 1969

CATTLE 2900 — compared to last weeks close. Slaughter Steers uneven, Choice and Prime steady, instances of 25 higher, Good and low Choice steady to 25c lower, Cows steady to 50 higher, Bulls mostly steady

SLAUGHTER STEERS — Mixed-Choice and Prime 1200-1400 lbs 30 00 30 75; Choice 950-1440 lbs 28 25 29 85 high Good and low-Choice 27 50-28 85, Good 25 50-27 85, Standard and low-Good 23 75 25 00

COWS — Utility and high-dressing Cutter 17 50-19 50 few to 19 75, Cutter 16 50 18 25, Canner and low-Cutter 14 50-16 75

BULLS — Choice 25 25 26 50, few on Monday 26 75 27 00, Good 24 00-26 00, Utility and Commercial 23 50-25 85, few head 26 00-27 50

CALVES 450 — Vealers 1 00 2 00 lower

VEALERS — Choice 46 00 49 50, Good 41 00 46 00 Standard 35 00-42 00, Utility 31 00-37 00, Cull 90-120 lbs 26 00-32 00, 70-90 lbs 22 00-26 50

HOGS 1300 — Barrows and gilts steady to 25 lower

BARROWS AND GILTS — US 1-2 200-240 lbs 21 50-22 00 US 2-3 200-245 lbs 20 60 21 25 US 2-3 255-270 lbs 19 60-20 35

SHEEP 400 — Woolled lambs steady to 50c lower, ewes fully steady

WOOLED LAMBS — Choice 65-100 lbs 28 50-29 50, few lots 30 00, Good 60-95 lbs 25 50-28 00; Utility 22 00-25 50

SLAUGHTER EWES — Utility and Good 6 00-7 50

Egg Sizes

The seven-inch-long egg of the ostrich is the largest egg of any living bird, the smallest is that of the vervain hummingbird of Haiti, which measures 1/2-inch in length

We *don't* know how much money the office braggart really has, but we are sure he has a sizable bunk account



OFFERS YOU
A COMPLETE LINE
OF TOP-YIELDING
SINGLE CROSSES!
(and every one of them
YIELD WARRANTED)

YW Hybrids are the champions of the single crosses and now four new ones have been added to meet the challenge of today's high population, narrow row planting and harvesting requirements. Test them on your own farm without risking a penny of your seed investment

Ask about our quantity discount and these top-yielding YW HYBRIDS
SX 362, SX 42A, SX 44
SX 47, SX 54, SX 67
SX 64, SX 92, SX 96

E. R. KREIDER

555 Willow Rd
Lancaster

Phone 393-4890

Auction Only

January 15, 1969

CATTLE 582 — Compared to Monday Slaughter Steers steady to 50 lower; Cows steady to strong; Bulls mostly steady Supply included 18 percent Cows

SLAUGHTER STEERS — Choice 950 1440 lbs 28 25-29 85, one lot Prime 1250 lbs 30 75 high-Good and low-Choice 27 50-28 85; Good 25 50 27 85, Standard and low-Good 23 75-25 00

COWS — Utility and high-dressing Cutter 18 00-19 00, few 19 10-19 75, Cutter 16 50 18 00, Canner and low-Cutter 14 50-16 75

BULLS — Choice 25 25 26 35, Good 24 50 25 75, Utility and Commercial 24 75-25 85; individual 1720 lbs 27 50

CALVES 105 — Vealers steady to 1 00 higher

VEALERS — Choice 47 00-49 50, Good 42 00 45 50, Standard 37 50 42 50, Utility 31 50 37 00, Cull 95-120 lbs 26 00-32 00, 70-90 lbs 22 50-26 50

HOGS 210 — Barrows and gilts steady to strong

BARROWS AND GILTS — US 1-2 200-240 lbs 21 50 22 00 US 2-3 200-245 lbs 20 60-21 25 US 2-3 255-270 lbs 19 60-20 35

Vintage Auction

January 14, 1969

CATTLE 652 — Compared to last Tuesday Slaughter Steers 25 to 50 higher, Cows 25-50 higher; small supply Bulls steady to 50 lower Supply included 30 percent Cows and 10 percent Feeder Steers

SLAUGHTER STEERS — High-Choice and Prime 1050-1425 lbs 29 85 30 60, four head 31 10-31 35, Choice 950-1465 lbs 28 25-30 00, high Good and low-Choice 27 85-29 00, Good 25 50 28 25, Standard and low-Good 24 00-26 00

COWS — Utility and high-dressing Cutter 17 25 19 50, few to 20 00, Cutter 16 50-18 50; Canner and low-Cutter 14 50-16 60

BULLS — Couple Good 25 00, Utility and Commercial 23 35-24 75, three head 1950 2250 lbs 26 00-27 50

FEEDER STEERS — Choice 860 940 lbs 27 00-27 10, Good and Choice 725 825 lbs 24 60-26 25

CALVES 469 — Vealers unevenly steady, instances 1 00 lower on Good and Choice

VEALERS — Choice 45 00-49 50, Good 42 50-45 00, Standard 37 50-43 00, Utility 32 00 38 00, Cull 90-120 lbs 27 50-32 00, 70 85 lbs 23 00-28 00

(Continued on Page 3)

FUTURES TRADING

(Closing bids as of Thursday, January 16, 1969)

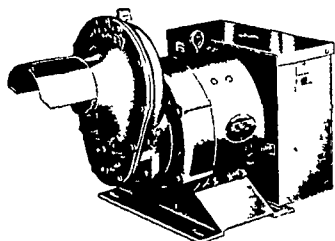
	Midwestern Live Cattle — Chicago	Live Hogs — Chicago	Maine Potatoes — New York
February	28.00	19.40	
March			2.79
April	27.02	18.50	2.97
May			3.51
June	26.62	20.25	
August	26.71	19.85	
Oct.	26.60		
November			2.38
December	26.60		

a-asked b-bid n-nominal

Trend Cattle are steady; Hogs are steady and Potatoes are stronger.

WINPOWER TRACTOR DRIVEN ALTERNATORS

NO COMMUTATOR
or
DC BRUSHES TO
CREATE SERVICE PROBLEMS



- Superior Motor Starting Ability
- Close Voltage Regulation
- Instantaneous Recovery To Rated Voltage With Sudden Load Application
- Electronic Rectification

INSIST on a
WINPOWER DEMONSTRATION
at YOUR Farm
Before You Buy ANY Tractor
Driven Alternator

WINPOWER
1800 RPM
LOW SPEED
HEAVY DUTY

DEMONSTRATED, INSTALLED AND SERVICED BY

ELECTRIC MOTOR SERVICE & SALES

ELECTRIC MOTOR GENERATOR AND POWER TOOL SPECIALISTS

Next to Clauster Shopping Center

EPHRATA, PA. 24 N Reading Road - Rt. 222 Area Code 717 733 7911

New Holland Auction

January 16, 1969

CATTLE 746 — Compared to last Thursday Slaughter Steers steady to 50 higher; Cows steady to 50 higher, least advance on Utility; Bulls steady to 50 lower. Supply included 40 percent Cows and 36 percent Slaughter Steers

SLAUGHTER STEERS — High-Choice and Prime 1050-1275 lbs 28 85-30 50, five head 30 60 31 00; Choice 950-1375 lbs 28 25-30 00; high-Good and low-Choice 27 35-28 85; Good 25.75-28 00, Standard and low-Good 23 50 25 50

SLAUGHTER HEIFERS — Few Choice 850-960 lbs 25 75-26 85

COWS — Utility and high-dressing Cutter 17 50-19 25, few 19 50-19 85; Cutter 16 75-18 25, Canner and low-Cutter 15 00-16 75

CALVES 387 — Vealers fully steady

VEALERS — Choice 48 00-51 50; Good 43 00-47 50, Standard 39 00 43 50; Utility 33 00-39 50; Cull 90-120 lbs 27 00-33 00, 70-90 lbs 24 50-28 00

SHEEP 24 — Insufficient volume of any one class to fully test trends. Couple lot Choice 90-95 lbs woolled lambs 30 50-31 50, few head Choice and Prime 60-75 lbs. new crop lambs 32 50-37 50 One lot Good 70 lb woolled lambs 27 00

BULLS — Choice 26 35-26 85, few 27 75; Good 24 00-25 75; Utility and Commercial 23 35-25 85, few 26 00-26 60.

COWS
January 15, 1969

Receipts of 80 cows sold steady. Holstein 420-515; Other breeds 250-385.

HORSES
January 13, 1969

Receipts of 310 horses sold steady Work horses (single) 170-220, (pairs) 500-600; Riding horses 95-390; Mules 135-190, Driving horses 115-240; Pony Mares 15-25, Geldings 12-20, Killers 8-9

Chicago Cattle Weekly Review

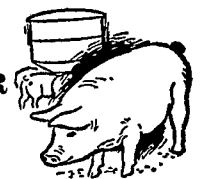
CATTLE — Compared with the previous Friday. Slaughter steers and heifers average Choice and above steady. Low Choice and below unevenly steady to 25 lower. Cows steady to 25 higher, bulls unchanged.

Over all finish of slaughter steers for the week 10 percent Prime and 75 per cent Choice, about the same as last week and last year. The average age cost and weight for the week estimated at 29 00 and 1150 lbs. compared with 28.72 and 1157 lbs last week and 26.75 and 1156 lbs. last year.

SLAUGHTER STEERS — On Wednesday, Prime 1225-1400 lbs Yield Grade 3 and 4 31.00-31.50 Mixed High Choice and Prime 1100 1375 lbs. 30.00-31.00. Choice 950-1350 lbs. Yield Grade 2 to 4 28.75-30.00. Mixed Good and Choice 27.50-28.75.

SLAUGHTER HEIFERS — On Wednesday, Prime 961-1045 lbs Yield Grade 3 and 4 29.25-29.50 Mixed High Choice and Prime 950-1050 lbs 28.75-29.25. Choice 850-1025 lbs. Yield Grade 2 to 4 27.50-28.75. Mixed Good and Choice 26 25-27.50.

SELL ★
YOUR
BUTCHER
HOGS
DIRECT



TO
ARMOUR CO.

READING, PA.

We will be glad to look at
your hogs & bid you.

CALL AL SHAFFER AT
376-2941. Evenings 779-3847

VINTAGE SALES STABLES, Inc.

PARADISE, PENNA.

BULLS, STEERS, BUTCHER COWS,
HOGS, LAMBS AND VEAL CALVES
SOLD ON COMMISSION

SALE EVERY TUESDAY 1:30 P.M.

FAT HOGS AND FEEDER PIG SALE
EVERY SATURDAY AT 10 A.M.

For Marketing Information
Phone Area Code 717-442-4181

Box 100

Paradise, Pa.
10 mi. East of Lancaster on Rt. 30

Kenneth E. Hershey, Sales Manager

AUCTIONS MAKE THE DIFFERENCE IN MARKETING LIVESTOCK NEW HOLLAND MAKES THE DIFFERENCE IN AUCTIONS

Monday — 10:00 A.M. Horse Sale

10:30 A.M. Fat Hogs and Shoats

2:30 P.M. Fat Steers, Bulls, Cows and Veal

Wednesday — 12:30 P.M. Dairy Sale

Thursday — 12:30 P.M. Fat Steers, Bulls, Cows and Veal

New Holland Sales Stables

New Holland, Penna.

717-354-2194

Abe W. Dittenbach, Sales Manager