

MARKET NEWS REPORT

At Lancaster Yards

Weekly Review

January 10, 1969

CATTLE 2600 — Compared to last weeks close Slaughter Steers uneven; Choice and low-Prime 25-50 higher, Standard to low-Choice steady, instances 25 lower.

COWS — Steady to 25c lower, least decline on Utility, Bulls fully steady, with some sales Utility-Commercial 50c higher, Feeder Steers steady Supply included an estimated 60 percent Slaughter Steers, 15 percent Cows and Bulls, with the balance mainly Feeder Steers

SLAUGHTER STEERS — Mixed-high-Choice and Prime 1100-1350 lbs 29 50 30 35, Choice 950-1300 lbs 28-29 75, few 1350-1475 lbs 27 50-28 85, high-Good and low-Choice 27 25-28 50, Good 25 27 50; Standard and low-Good 23 10 25

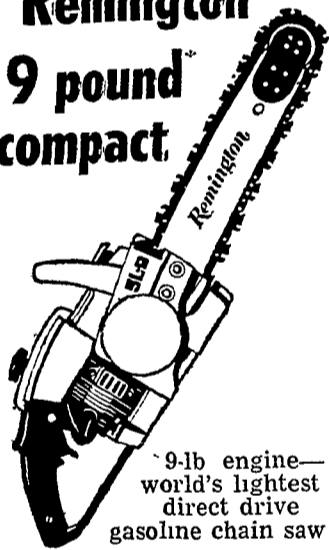
SLAUGHTER HEIFERS — Choice 750-925 lbs 25 35 27, Good 23 50-25 25

COWS — Utility and high-dressing Cutter 17 50-19, Cutter (Continued on Page 3)

Please Note

If you are not receiving your copy of Lancaster Farming on Saturday, the date of issue, please give us a call or drop us a card. Thanks!

See the new Remington 9 pound compact



9-lb engine—world's lightest direct drive gasoline chain saw
Meet the Remington SL-9. The world's lightest, handiest, toughest gasoline chain saw. Its 9 lb gasoline powered direct-drive engine packs more power per pound than many bigger units. Like all Remington Chain Saws, the SL-9 has an exclusive Roller Nose Guide Bar to reduce saw chain drag, increase cutting power and insure longer guide bar and sprocket life.

Remington

DU PONT

Sales and Service

GEHMAN BROS.

1 Mile North of Terre Hill on Route 897

Phone 215 445 6272

East Earl R D 1 Penna

Vintage Auction

January 7, 1969

CATTLE 703 — Compared to last Tuesday Slaughter Steers strong to 25 higher; Cows 50-100 lower. Bulls fully steady Supply included 39 percent Cows

SLAUGHTER STEERS — High-Choice and Prime 1000-1275 lbs 29 60-30 50, few head 30 60-30 75, Choice 950-1300 lbs, 28 00-29 85, high-Good and low-Choice 27 50-28 25; Good 25 00-27 75, Standard and low-Good 23 50-25 00.

SLAUGHTER HEIFERS — Few Choice 900-1150 lbs. 26 00-27 85, Good 750-950 lbs. 23 35-25 00

COWS — Utility and high-dressing Cutter 17 00-19 50, few 19 50-20 00; Cutter 16 00-18 00, Canner and low-Cutter 14 50-16 00

BULLS — Choice 26 00-26 60, (Continued on Page 3)

Auction Only

January 8, 1969

CATTLE 627 — Compared to Monday Slaughter Steers uneven Choice to low-Prime steady to 25 higher, Good to low-Choice steady to 25 lower Cows steady to 50 lower, least decline on Utility. Bulls fully steady, with some sales Utility and Commercial 50 higher Supply included 19 percent Cows

SLAUGHTER STEERS — Mixed Choice and low-Prime 1100-1350 lbs 29 60 30 35; Choice 950-1350 lbs 28 00-29 75, few 1350-1475 lbs 27 50-28 85, high-Good and low-Choice 27 25-28 50, Good 25 00-27 25 Standard and low-Good 23 10-25 00

SLAUGHTER HEIFERS — Choice 750-925 lbs 25 35-27 00, Good 23 50 25 25

COWS — Utility and high-dressing Cutter 17 50-19 00, (Continued on Page 3)

New Holland Auction

January 9, 1969

CATTLE 791 — Compared to last Thursday, slaughter steers steady to 25c higher, instances 50c higher; Cows steady to 50c higher. Most advance on cutter. Bulls steady to 50c higher Supply included 38 percent cows.

SLAUGHTER STEERS — Few High-Choice and Prime 1050-1275 lbs. 29 75-30 25, Choice 900-1350 lbs 28-30; High-good and low choice 27 25-28 25, Good 25 50-28 10; Standard and low-good 23-25.25

COWS — Utility and High-Dressing Cutter 17 25 19, few head at 19 10-20 25, Cutter 16 50-18 50, Canner and low-cutter 14-50 16 75

BULLS — Choice 26-27 10, couple at 27 75-28, with an Individual at 29, Good 23 60-26 25, Utility and Commercial 23 25-26, Several 26 25-26 85, One individual 24 75 lbs 28 35

VEALERS 419 — 1 to 3 higher; Choice 47-49, Good 42 50 46, Standard 37 50-44 50; Utility 34-40, Cull 90-100 lbs. 28-34; 70-90 lbs 24-29

SHEEP 3 — Insufficient volume for a market test

COWS

January 8, 1969

Receipts of 30 cows sold stronger Holstein 250-680; Other breeds 295-375.

HORSES

January 6, 1969

Receipts of 174 horses sold stronger Mules (single) 150-

245, (pairs) 660-680; Work horses (single) 165-295, (pairs) 460-685; Driving horses 105-140; Riding horses 85-200; Pony Mares 20-25, Geldings 15-20; Killers 8-9.

HOGS

January 6, 1969

Receipts of 836 hogs sold steady. Retail 21 50-23; Wholesale 20 50-20.75; Heavyweights 19-20 50, Sows 12 50-15.

CALVES

January 6, 1969

Choice and Prime calves sold for 43-49 cents a pound this week. Good and L Choice 38-42 50, Standard 30-37.50; Common 15-25. All grades were steady

Chicago Cattle

Weekly Review

CATTLE — Compared with last weeks close, slaughter steers 25-50 higher, slaughter heifers steady to 25 higher, cows 75-1 00 lower, except Commercial steady to 25 lower, bulls unchanged

A moderate reduction in receipts early in the week appeared to be the main bullish factor for the price upturn in slaughter steers.

The advance offset most of the price declines registered at the close of last week. Local receipts consisted of 72 percent. (Continued on Page 14)

FUTURES TRADING

(Closing bids as of Thursday, January 9, 1969)

	Midwestern Live Cattle — Chicago	Live Hogs — Chicago	Maine Potatoes — New York
February	29.95	19.00	
March			2.64
April	27.07	18.55	2.78
May			3.29
June	26.60	19.95	
August	26.75	19.85	
October	26.57		
November			2.37

a-asked b-bid n-nominal

Trend Cattle are lower; Hogs are steady and Potatoes are lower

VINTAGE SALES STABLES, Inc.

PARADISE, PENNA.

BULLS, STEERS, BUTCHER COWS, HOGS, LAMBS AND VEAL CALVES SOLD ON COMMISSION

SALE EVERY TUESDAY 1:30 P.M.

FAT HOGS AND FEEDER PIG SALE EVERY SATURDAY AT 10 A.M.

For Marketing Information

Phone Area Code 717-442-4181

Box 100

Paradise, Pa.

10 mi East of Lancaster on Rt. 30

Kenneth E. Hershey, Sales Manager

AUCTIONS MAKE THE DIFFERENCE IN MARKETING LIVESTOCK
NEW HOLLAND MAKES THE DIFFERENCE IN AUCTIONS

Monday — 10:00 A.M. Horse Sale

10:30 A.M. Fat Hogs and Shoats

2:30 P.M. Fat Steers, Bulls, Cows and Veal

Wednesday — 12:30 P.M. Dairy Sale

Thursday — 12:30 P.M. Fat Steers, Bulls, Cows and Veal

New Holland Sales Stables

New Holland, Penna.

717-354-2194

Abe W. Diffenbach, Sales Manager

Need . . .

HAY - STRAW - EAR CORN

Buy Now and Save!

More and more farmers are buying from us for better value and all around satisfaction.

Delivered — any quantity

Phone Area Code 717 687-7631

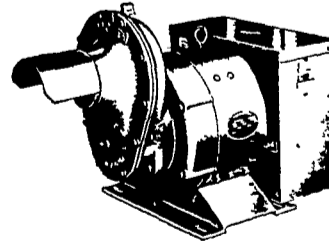
Esbenshade Turkey Farm

"America's Oldest"
PARADISE, PA.

WINPOWER

TRACTOR DRIVEN ALTERNATORS

NO COMMUTATOR or DC BRUSHES TO CREATE SERVICE PROBLEMS



- Superior Motor Starting Ability
- Close Voltage Regulation
- Instantaneous Recovery To Rated Voltage With Sudden Load Application
- Electronic Rectification

INSIST on a WINPOWER DEMONSTRATION at YOUR Farm Before You Buy ANY Tractor Driven Alternator

WINPOWER

1800 RPM
LOW SPEED
HEAVY DUTY

DEMONSTRATED, INSTALLED AND SERVICED BY

ELECTRIC MOTOR SERVICE & SALES

ELECTRIC MOTOR GENERATOR AND POWER TOOL SPECIALISTS

Next to Cloister Shopping Center

EPHRATA, PA. 17033-1102 Area Code 717 733-7911