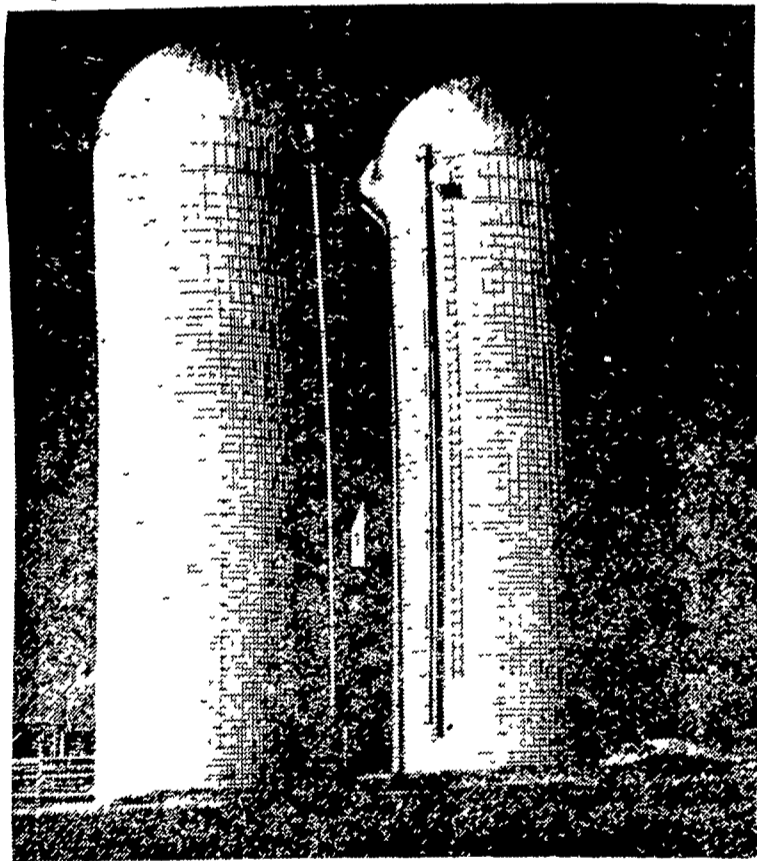




CLARK STAUFFER, 15-year-old Ephrata High School Sophomore showed the grand champion ears in the First FFA Corn Show held Thursday at the Farm and Home Center L. F. Photo

- **Stauffer** Manor, was 4th, Fred Hess. Penn Manor was 5th, Clair Witmer, Lampeter Strasburg was Gary Neff Penn Manor was 6th Vernon Yost, Pequea Valley 2nd Eugene Bollinger, Ephrata was 7th and Jay Zimmerman was 3rd, Gary Long, Penn man, Ephrata was 8th

LANCASTER SILOS



SAVE AS MUCH AS \$800. BY BUYING YOUR LANCASTER SILO NOW!

CONTACT DEALERS BELOW

C. B. HOOBER & SON
Intercourse, Pa.
717 768-3501

NEVIN N. MYER
Chester Springs, Pa
215 827-7481

AGRI INC.
Ephrata R2 Pa
717 354 5374

COPE & WEAVER CO.
New Providence Pa
717-786 7351

C. H. ZIMMERMAN
Atglen, Penna
215-593 5129

MANUFACTURED BY

LANCASTER SILO COMPANY

2436 Creek Hill Road, Lancaster, Pa. 17601

Old And New Featured At Farm Show

"Something old something new" — the beginning of a well used phrase that certainly applies to the 1969 Farm Show, January 13-17

The "something old" is a description that covers the Farm Show complex, a sprawling structure bursting at the seams with entries from exhibitors across the state and commercial displays of machinery, equipment and products

"Something new" at the 53rd Farm Show covers a wide variety of items, from the addition of Charolais cattle in the beef breeding classes and the expansion of horse competition to additions and expansion of the Show's refreshment facilities

Changes in horse competition include the addition of a six-horse hitch class with premiums, increased premiums in the



THIS FARM SETTING was featured last week as the last in a series of eight Mystery Farms. It is the 105 acre farm of Mr. and Mrs. David McMichael, Lancaster R6, located in Pequea Twp. The McMichael's have four children Ruth Ann 13, Jane Louise 12, Lois Elaine 9, and Donna Jean 6.

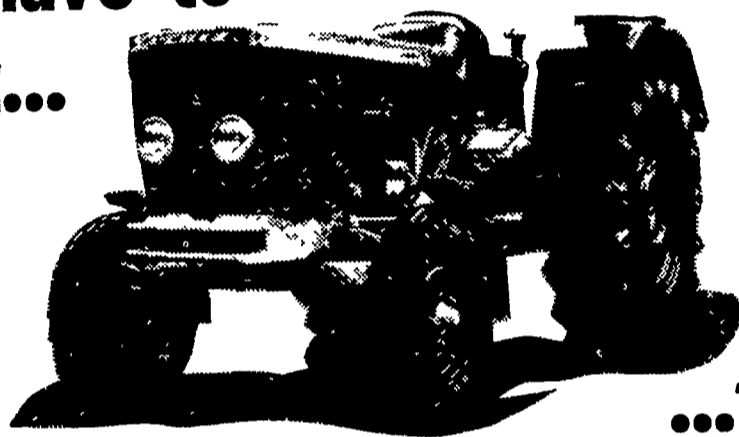
This concludes the series of contest pictures of local farms. The winners of the cash prizes will be announced in the January 25 issue. (Note: Announcement of the winners is being held one week due to the Farm Show next week.)

pair of hitched horses class and division of the equestrian get-of-sire class into junior and senior competition

The expanded poultry exhibit of last year's show proved so popular it will again be fea-

tured this year with some renovations A kitchen has been added and will be staffed by home economists to demonstrate the preparation of egg and poultry dishes throughout the week.

You have to see it...



DEUTZ'S New-series 06 tractors are the ultimate in diesel tractor quality!

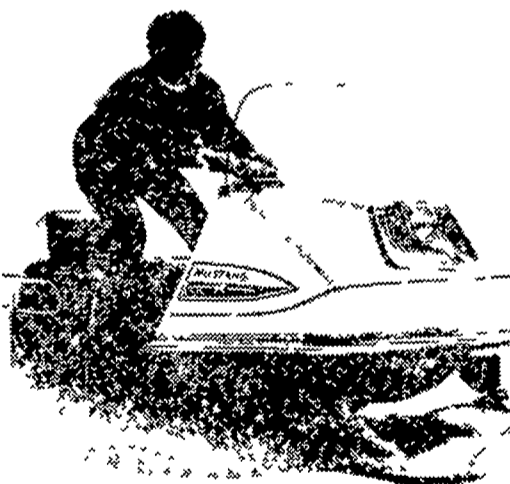
See a pilot model of the Model D6006 DEUTZ tractor at our shop right now!

OR CALL FOR DETAILS: 768-8531

...to appreciate it!

STAUFFER Diesel Refrigeration, Inc.

Hatville Road, Gordonville, Pa. 17529



Playful Powerful

'69

POLARIS

MASSEY - FERGUSON

BOLENS

SNOWMOBILES

NEW & USED

Sales & Service

R. M. BRUBAKER, Inc.

145 PROSPECT ROAD

SALUNGA, PENNA.

PHONE 898-2294