

MARKET NEWS REPORT

At Lancaster Yards

Weekly Review

Monday, December 30, 1968

CATTLE 600 — Compared to last weeks close the meager supply of slaughter steers mostly steady. Cows steady, Bulls fully steady. Feeder steers not fully established, supply includes an estimated 55 percent slaughter steers, 25 percent cows and bulls with balance mainly feeder steers

SLAUGHTER STEERS — Mixed Choice and Prime 1200-1275 lbs 30 50, Choice 1125-1225 lbs 29-30 Load and lot mixed-Good and Choice 1050-1250 lbs 28 25-28 50 Good 1000-1225 lbs 27 50-28

COWS — Utility and high dressing Cutter 19 25-21, few to 21 50, Cutter 17 75-19 50, Canner and low-Cutter 16 50-18

BULLS — Choice 25 50-26 50, Good 24 50 25 25, few Utility 25-75 26 75, one lot Commercial 24 50

FEEDER STEERS — Load Choice 850 lbs 27 75, one load mixed-Good and Choice 800 lbs \$27

VEALERS 358 — Compared to last Monday Vealers \$1-2 higher, although Cull only steady Choice 47-48, few head

Has Other Names

The game of bingo, a form of lottery said to claim more devotees in the U.S. than any other gambling game, legal or illegal, has also been called keno, beano, lucky, screeno and lotto

AUTOMATION

Controlled Environment Cage Systems

Layer - Chick - Pullet Cage Feeders Egg Collectors

E. M. HERR EQUIPMENT, INC.

Willow Street, R. D. 1, Pa. 717 464-3321

See Our Unique Exhibit

Farm Show Space P3 & 4

EARLY ORDER DISCOUNTS NOW AVAILABLE ON —

MADISON SILOS

- You save money by ordering your Madison Silo early
- Feed high quality nutritious silage for more milk, more meat, more profit
- Madison Silos bank financing available
- Let us estimate



Landis Bros., Inc.

1305 Manheim Pike Lancaster, Pa. Phone 393-3906

Auction Only

The regular Wednesday auction at Lancaster was held Friday, January 3, 1969 and no report was available at press time

50 Good 43-47, Standard 37-43, Utility 32-36, Cull 95 120 lbs 26-31, 70-90 lbs 23-26

HOGS 826 — Barrows and Gilts steady to 50c higher Sows scarce

BARROWS & GILTS US 1-2 195-240 lbs 21 50-22, US 1 200-235 lbs 22 50, US 2-3 190-260 lbs 20 21, US 2-3 250-275 lbs 19-20

SHEEP 244 — Woolled slaughter lambs 50c higher, Ewes absent

WOOLED LAMBS — Choice 75 100 lbs 28-29; Good 65-95 lbs 25 27 50, Utility 22-25

Vintage Auction

December 31, 1968

CATTLE 994 — Compared to last Tuesday, Slaughter Steers and Cows 50-\$1 lower Bulls fully steady Supply included an estimated 24% Cows

SLAUGHTER STEERS — High-Choice and Prime 1050-1325 lbs 29 50-30 35, few head 30 50-30 85, Choice 900-1350 lbs 27 85-29 75, high-Good and low-Choice 27 25-28 35, Good 26-27 85, Standard and low Good 23 50-26

COWS — Utility and high-dressing Cutter 18 50 20 10, few head 20 50-21 50, Cutter 17-19, Canner and low-Cutter 15 50-17 25

BULLS — Good 24-24 85, few Choice 25 60-26 25, Utility and Commercial 23 50-25 35, several 25 75-26 60

VEALERS 437 — Uneven Good and Choice steady to \$2 (Continued on Page 3)

FUTURES TRADING

(Closing bids as of Thursday, January 2, 1969)

	Midwestern Live Cattle — Chicago	Live Hogs — Chicago	Maine Potatoes — New York
February	27.70	18.75	
March			2.62
April	27.00		2.80
May			3.30
June	26.70	19.95	
August	26.80	19.85	
October	26.75		
November			2.37
December	26.60		

a-asked b-bid n-nominal

Trend: Cattle are lower; Hogs are steady and Potatoes are higher.

VINTAGE SALES STABLES, Inc.

PARADISE, PENNA.

BULLS, STEERS, BUTCHER COWS, HOGS, LAMBS AND VEAL CALVES SOLD ON COMMISSION

SALE EVERY TUESDAY 1:30 P.M.

FAT HOGS AND FEEDER PIG SALE EVERY SATURDAY AT 10 A.M.

For Marketing Information

Phone Area Code 717-442-4181

Box 100 Paradise, Pa. 10 mi. East of Lancaster on Rt. 30

Kenneth E. Hershey, Sales Manager

AUCTIONS MAKE THE DIFFERENCE IN MARKETING LIVESTOCK

NEW HOLLAND MAKES THE DIFFERENCE IN AUCTIONS

Monday — 10:00 A.M. Horse Sale
10:30 A.M. Fat Hogs and Shoats
2:30 P.M. Fat Steers, Bulls, Cows and Veal
Wednesday — 12:30 P.M. Dairy Sale
Thursday — 12:30 P.M. Fat Steers, Bulls, Cows and Veal

New Holland Sales Stables

New Holland, Penna. 717-354-2194

Abe W. Diffenbach, Sales Manager

New Holland Auction

January 2, 1969

CATTLE 862 — Compared to last Thursday, slaughter steers mainly 50-75 lower Cows 150-200 lower Bulls mostly steady Supply included 43 percent cows

SLAUGHTER STEERS — High-Choice and Prime 1050-1325 lbs 29 50-30 25, Choice 950-1250 lbs 27 75-29 75, part load Choice 1400-1460 lbs 27 60-29 10, high-Good and low-Choice 27 25-28 25, Good 25 50-27 50, Standard and low-Good 23-25 50

SLAUGHTER HEIFERS — Choice 800-975 lbs 24 50-26, couple Prime 27 60-28 50, Good 23-24 50

COWS — Utility and high-dressing Cutter 17 50-19 10, couple 19 35-19 50; Cutter 16 25-18-50, Canner and low-Cutter 14-16 50

BULLS — Choice 25 50-27 25, five head 27 50-28 60, Good 24 50-26, Utility and Commercial 23-25 25 75, several 26-26 75, individual 2200 lb 27 75

VEALERS 423 — Standard to Choice \$3-4 lower; Cull and Utility steady to \$1 lower, Choice 45 48, few 49 50-50 50, Good 40-50-45 50, Standard 35-40 50, Utility 31 37, Cull 95 120 lbs 27-30 50, 70-90 lbs 22 50-28 50

SHEEP 6 — Insufficient volume for a market test, one lot Good 78 lb. woolled lambs \$24

COWS

January 1, 1969

Receipts of 45 cows and 8 heifers sold steady Holstein 350-450, Other breeds 225-325; Heifers 165-285.

HORSES

December 30, 1968

Receipts of 225 horses sold steady Mules 135-175; Riding horses 85-190; Driving horses 95-300, Work horses (single) 135-300, (pairs) 410-600, Pony Mares 20-25, Geldings 15-20; Killers 6-7.

HOGS

December 30, 1968

Receipts of 868 hogs sold steady Retail 21 50-23; Wholesale 20 75 21 25, Heavyweights 19-20, Sows 13 50-15 25.

CALVES

December 30, 1968

Receipts of 135 calves sold steady Choice and Prime 42-49; Good and L Choice 36-41 50; Standard 33-35 50, Common 20-32

Chicago Cattle

Weekly Review

CATTLE — Compared with last weeks close, slaughter steers 50-100 lower, most decline on high choice and prime, slaughter heifers 25-50 lower, cows and bulls unchanged

Local receipts consisted of 75 percent slaughter steers, 20 percent heifers, and the balance mainly cows. Overall finish of slaughter steers was about the same as a week ago with 12 percent prime and near 80 percent choice This compares with 12 percent prime and 74 percent choice a year ago Average cost and weight of slaughter steers, estimated at 29.10 and 1145 lbs.

(Continued on Page 3)

Follow our Alfalfa Program

0-18-36 — Can include Boron and Chickweed control at your desired rate of application.
or
0-26-26

Use our Truck Spreader Service or rental Trailer Spreaders

ORGANIC PLANT FOOD CO.

GROFFTOWN RD., NEXT TO WATERWORKS

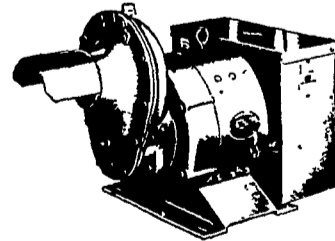
Ph. 392-4963 or 392-0374

YOUR FULL SERVICE DEALER

WINPOWER

TRACTOR DRIVEN ALTERNATORS

NO COMMUTATOR or DC BRUSHES TO CREATE SERVICE PROBLEMS



- Superior Motor Starting Ability
- Close Voltage Regulation
- Instantaneous Recovery To Rated Voltage With Sudden Load Application
- Electronic Rectification

WINPOWER

1800 RPM LOW SPEED HEAVY DUTY

INSIST on a WINPOWER DEMONSTRATION at YOUR Farm Before You Buy ANY Tractor Driven Alternator

DEMONSTRATED, INSTALLED AND SERVICED BY

ELECTRIC MOTOR SERVICE & SALES

ELECTRIC MOTOR GENERATOR AND POWER TOOL SPECIALISTS

Next to Cloister Shopping Center

EPHRATA, PA. 17310 Phone Area Code 717 733-7911