

State Parks Opened For Snowmobiling

Snowmobiling is rapidly becoming one of Pennsylvania's most popular winter sports and the opportunity to indulge, provided "Mother Nature" cooperates, has never been better in the Keystone state.

The Department of Forests and Waters, which permitted snowmobiling on State park lands for the first time last January, has listed 52 State parks which will be open to snowmobilers during the 1968-69 season.

Designated for snowmobiling, from 8 a.m. to sundown, are day-use areas including trails and other areas specifically set aside for this particular usage. However operators of snowmobiles must abide by the existing Pennsylvania State Park rules and regulations.

Closed to this sport will be public roads open to normal vehicular traffic and all frozen surfaces, such as, State park lakes, ponds and streams.

On a county-by-county basis, State parks which will be open to snowmobiling are:

Armstrong - Crooked Creek SP; Bedford - Blue Knob SP and Shawnee SP; Berks-French Creek SP, Beaver - Raccoon

Creek SP; Bucks - Nockamixon SP; Butler - Moraine SP; Carbon - Big Pocono SP and Hickory Run SP; Cambria - Prince Gallitzin SP; Cameron - Sinnemahoning SP; Centre - Black Moshannon SP; Chester - Valley Forge SP; Clarion - Cook Forest SP; Clearfield - Parker Dam SP and S B Ellott SP; Clinton - Kettle Creek SP; Columbia - Ricketts Glen SP; Cumberland - Pine Grove Furnace SP and Col. Denning SP; Elk - Bendigo SP; Fayette - Ohopyle SP; Franklin - Caledonia SP; Fulton - Cowans Gap SP; Greene - Ryerson Station SP; Huntingdon - Whipple Dam SP and Greenwood Furnace SP; In-

diana - Yellow Creek SP; Lebanon - Memorial Lake SP; Lycoming - Little Pine SP; Mercer - Pymatuning SP; Mifflin - Poe Valley SP; Monroe - Tobyhanna SP, Gouldsboro SP and Prompton SP; Pike - Promised Land SP and Fort Washington SP; Potter - Lyman Run SP and Denton Hill SP, Schuylkill - Tuscarora SP; Somerset - Kooser SP and Laurel Hill SP, Tioga - Colton Point SP, Hills Creek SP and Leonard Harrison SP; Union - Ravensburg SP, Raymond B Winter SP and Shickellamy SP; Warren - Chapman SP; Westmoreland - Keystone SP and Laurel Mountain SP, York - Gifford Pinchot SP

Farm Calendar

Monday, December 30

7:30 p.m.—Area Farm & Home Campaign chairmen meet with district chairmen

Tuesday, December 31

7:30 p.m.—4-H Veal Project meeting, F & H Center.

Thursday, January 2

8 p.m.—Lancaster Poultry Directors meet, F & H Center.
7:30 p.m.—Lancaster Co Soil & Water Conservation District meet, F & H Center



40 YEARS OF FARMING AND HERE'S ONE I NEVER THOUGHT OF...

"Lime your land while the ground is frozen!"

Winter is the best time to apply limestone. A fellow from Burkholder's Limestone in Ephrata put it this way:

"When your land is frozen hard, more consistent spreading is possible. And when the land begins to thaw, the depth and rate of penetration is such that the lime is better assimilated or mixed with the soil.

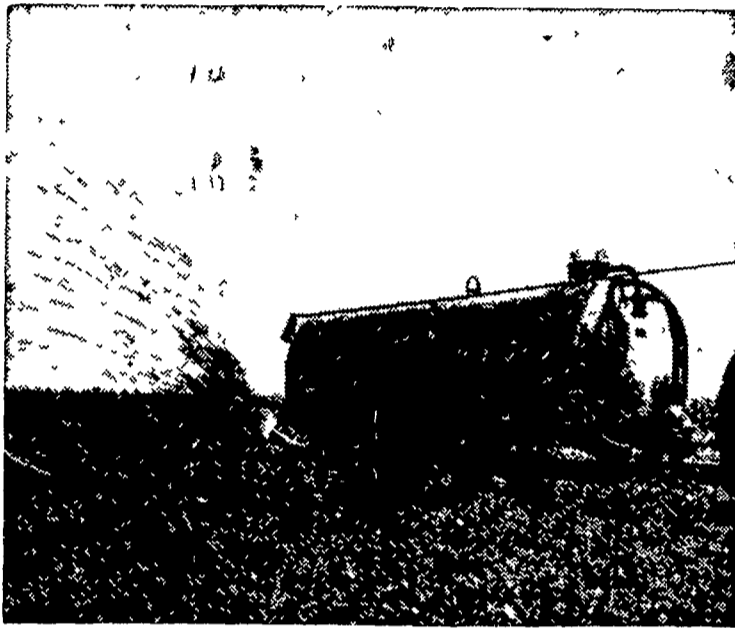
With spring plowing, the lime will have had a more complete effect on correcting soils acid condition."

He made real good sense to me. I know enough about farming to lime my land for greater yields. The people at Burkholder know their farming too. We get along fine together. They won't boast about their products unless you ask 'em.

I'll bet we'd all learn more if we did ask!



FOR MODERN SPREADER SERVICE CALL NOW! 354-9261

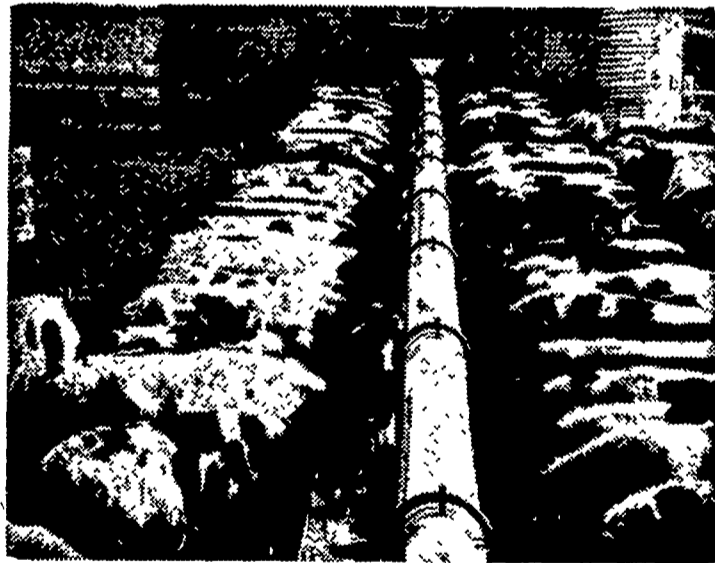


**"BETTER-BILT"
LIQUID MANURE SPREADER**
DISTRIBUTED AND SOLD BY

S. M. MANUFACTURING Co., Inc.

R. D. 4, Lititz, Penna. Phone 717-626-8585
Call or Write For Free Demonstration

FEED CATTLE FASTER AND MORE EFFICIENTLY THAN EVER BEFORE!



NOW! Feed up to 200' of bunk per drive . . . Feed multiple lots . . . Blend complete rations with . . .

VAN DALE'S NEW AUTOMATIC MULTI-FEEDERS

From the pioneer in silo unloading, come two low-power, mammoth capacity, bunk feeders for in-the-barn or feedlot feeding. You can feed from more than one silo (at the same time). Feed out to from one to four-or-more lots. Feed any material with big 9" or 12" true, bearing-suspended augers, (no metal-to-metal contact.) Feed entire bunk at one time; eliminate crowding.

High capacity and dependability . . . call us and we'll come out to see you, at your convenience.

CALEB M. WENGER

R. D. 1, Drumore Center 548-2116 QUARRYVILLE, PA.