

# MARKET NEWS REPORT

## At Lancaster Yards

### Weekly Review

December 23, 1968

**CATTLE 684** — Compared to last weeks close, slaughter steers steady on small supply; cows steady with last weeks advance; small supply bulls steady; few sales of feeder steers steady. Supply includes an estimated 45 percent slaughter steers, 25 percent cows and bulls with the balance mainly feeder steers.

**SLAUGHTER STEERS** — Load mixed Choice and Prime 1180 lbs. \$30; Choice 1075-1285 27.50-29.50.

**COWS** — Utility and high-dressing Cutter 19.25-20; Cutter

### Prolific Sheep Breed Introduced Into The United States

A shipment of Finnish Landrace sheep has arrived in the United States from Ireland and is now in quarantine at Clifton, N.J., the U.S. Department of Agriculture announces. Quarantine is a minimum of 30 days.

In its native Finland, this breed typically produces 2 to 4 lambs per pregnancy. By contrast, domestic American breeds usually produce 1 to 2 lambs per pregnancy.

Some Landrace sheep were sent from Finland in 1966 for testing at the Agricultural Institute of Ireland. The Institute, in turn, made descendants of its imported flock available to USDA's Agricultural Research Service. Direct imports from Finland to the United States are not permitted, due to the danger of introducing foot-and-mouth disease to this country.

When the quarantine at Clifton is over, the Landrace sheep will be distributed to ARS research stations at Beltsville, Md., Clay Center, Nebr., and Dubois, Idaho, for crossbreeding experiments designed to raise the lambing rate of domestic sheep. This type of work was not possible previously, because there is no record of previous US imports of Finnish Landrace sheep. The University of Minnesota is participating with ARS in this importation project.

## Robert K. Rohrer

**Bulldozing - Grading  
Patz Sales & Service  
Barn Cleaners - Silo  
Unloaders - Cattle Feeders**

Quarryville, R. D. 1  
Hensel 548-2559

## AUTOMATION

Controlled Environment  
Cage Systems

Layer Cuckles - Cullet  
Cage Feeders  
Egg Collectors

## E. M. HERR

EQUIPMENT, INC.

Willow Street R. D. 1, Pa.  
717 461 3321

See Our Unique Exhibit

Farm Show Space P3 & 4

## Vintage Auction

December 24, 1968

**CATTLE 496** — Compared to last Tuesday, slaughter steers 50-75c higher; cows 25-75c higher; small supply bulls fully steady; Supply included an estimated 23 percent cows.

**BULLS**—Few Good & Choice 24-25.50; Utility & Commercial 23.50-25, few 25.50.

**FEEDER STEERS** — Load Choice 845 lbs. 28.25; Choice 900-1100 lbs. 26.50-27.25.

**VEALERS 244** — Steady to \$2 higher. Choice 44-46, few head \$47; Good 41-45; Standard 36-41; Utility 32-36; Cull 95-120 lbs. 26-31, 70-90 lbs. 22.50-26.

**HOGS 849** — Barrows & gilts 50-\$1 higher.

**BARROWS & GILTS** — US 1-2 195-245 lbs. 21.50-22; US 1, 200-240 lbs. 22-23; US 2-3 180-255 lbs. 20.50-21.50; US 2-3 250-270 lbs. 19.50-20.50.

**WOOLED LAMBS** — Choice 65-95 lbs. 27-28.50, few head at \$29; Good 24.50-27; Utility 21-24.50.

**SLAUGHTER EWES** — Utility and Good \$4-7.50.

**SLAUGHTER STEERS** — High-Choice & Prime 1075-1350 lbs. 30.50-31.25; Choice 975-1350 lbs. 28.75-30.50; high-Good to low-Choice 28-29.25; Good 26-28.50; Standard and low-Good 23.50-26.10.

**COWS** — Utility and high-dressing Cutter 19-20.60, few 20.75-21; Cutter 17.75-19.25; Canner and low-Cutter 16.25-17.75.

**BULLS** — Couple Choice 27-85-28.75; couple Good 25-25.25; Utility 23.50-25.10.

**VEALERS 271** — Uneven, Good and Choice 3-5 higher; Utility and Standard steady; Cull \$2-3 lower; Choice 48-50; Good 43-46 50; Standard 36-40;

(Continued on Page 3)

## New Holland Auction

December 26, 1968

**CATTLE 647** — Compared to last Thursday, slaughter steers 50-\$1 higher; cows 50-1.50 higher; bulls 25-\$1 higher. Supply included 39 percent cows.

**SLAUGHTER STEERS** — High-Choice & Prime 1000-1250 lbs. 30.50-31, couple 31.25-31.50; Choice 950-1325 lbs. 28.60-30.50, high-Good and low-Choice 28-29.25; Good 26-28.60; Standard and low-Good 24-26.

**COWS** — Utility and high-dressing Cutter 19.75-21.75, few 21.85-22.60; Cutter 18-20; Canner and low-Cutter 16.50-18.25.

**BULLS** — Choice 26-28.75; couple 27.25-27.50; Good 25-26; Utility and Commercial 23.75-25.50, several 25.60-26.50, three-head 26.85-27.75.

**VEALERS 367** — Standard to Choice \$3-6 higher; Cull and Utility \$1-2 higher. Choice 48-50-43.50; Good 44.50-50; Standard 39.50-45; Utility 32.50-38.50; Cull 95-120 lbs. 28-33, 70-90 lbs. 24-28.50.

**SHEEP 26** — Insufficient volume to fully test market trends. One lot Utility 50 lbs. Woolled lambs \$11, few Utility Slaughter Ewes 7.50.

### HORSES

December 23, 1968

Receipts of 225 horses sold steady. Work horses (single) 145-255 (pair) 450-600; Riding horses 80-230; Driving horses 90-300; Pony Mares 10-15; Geldings 15-20; Killers 5-6.

### HOGS

December 23, 1968

Receipts of 796 hogs sold

steady. Retail 22-23.50; Wholesale 21-22; Heavyweight 19.50-20.50; Sows 12-14.25.

### CALVES

December 23, 1968

Receipts of 125 calves sold steady. Choice and Prime 41.50-46; Good and L. Choice 38-41; Standard 35.50-37.50; Common 20-35.

## Chicago Cattle

### Weekly Review

Compared with last weeks close, slaughter steers 50-1.00 higher, slaughter heifers 50-75 higher, cows 50 higher, bulls fully steady.

Reduced receipts during the holiday shortened week and rather sharp price up turns in the wholesale dressed beef trade appeared to be bullish factors contributing to the price advances in the live trade. Local receipts consisted of 78 per cent slaughter steers, 18 per cent heifers with the balance mainly cows. Overall finish of slaughter steers was the same as last weeks 11 per cent Prime and 80 per cent Choice, compared with 12 per cent Prime and 79 per cent Choice a year ago. Average cost and weight of slaughter steers, estimated at 29.25, highest since March, 1966, and 1145 lbs. compared with 28.81 and 1141 lbs. last week, and 26.22 and 1153 lbs. a year ago. Heifer supply largely average Good to average Prime weighing 800-1050 lbs.

**SLAUGHTER STEERS** — (Continued on Page 3)

## FUTURES TRADING

(Closing bids as of Thursday, December 26, 1968)

	Midwestern Live Cattle — Chicago	Live Hogs — Chicago	Maine Potatoes — New York
February	28.20	19.15	
March			2.59
April	27.45	18.75	2.75
May			3.25
June	26.92	20.00	
August	27.00	19.85	
October	26.90		
November			2.40

a-asked b-bid n-nominal

Trend: Cattle are steady; Hogs are steady; and Potatoes are lower.

## VINTAGE SALES STABLES, Inc.

PARADISE, PENNA.

BULLS, STEERS, BUTCHER COWS,  
HOGS, LAMBS AND VEAL CALVES  
SOLD ON COMMISSION

SALE EVERY TUESDAY 1:30 P.M.

FAT HOGS AND FEEDER PIG SALE  
EVERY SATURDAY AT 10 A.M.

For Marketing Information  
Phone Area Code 717-442-4181

Box 100 Paradise, Pa.  
10 mi. East of Lancaster on Rt. 30

Kenneth E. Hershey, Sales Manager

## AUCTIONS MAKE THE DIFFERENCE IN MARKETING LIVESTOCK

### NEW HOLLAND MAKES THE DIFFERENCE IN AUCTIONS

Monday — 10:00 A.M. Horse Sale  
10:30 A.M. Fat Hogs and Shoats  
2:30 P.M. Fat Steers, Bulls, Cows and Veal  
Wednesday — 12:30 P.M. Dairy Sale  
Thursday — 12:30 P.M. Fat Steers, Bulls, Cows and Veal

## New Holland Sales Stables

New Holland, Penna. 717-354-2194

Abe W. Dittenbach, Sales Manager

## Follow our Alfalfa Program

0-18-36 Can include Boron and Chick-  
or weed control at your desired  
0-26-26 rate of application.

Use our Truck Spreader Service or rental Trailer Spreaders

## ORGANIC PLANT FOOD CO.

GROFFTOWN RD., NEXT TO WATERWORKS

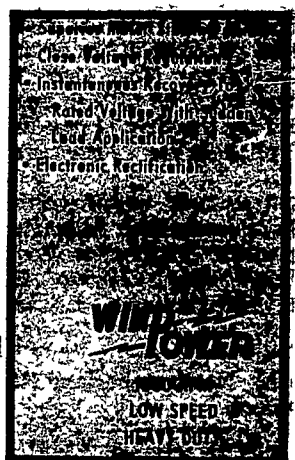
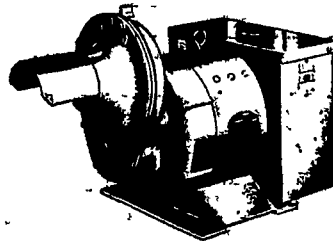
Ph. 392-4963 or 392-0374

YOUR FULL SERVICE DEALER

## WINPOWER

## TRACTOR DRIVEN ALTERNATORS

NO COMMUTATOR  
OR DC BRUSHES TO  
CREATE SERVICE PROBLEMS



INSIST on a  
WINPOWER DEMONSTRATION  
at YOUR Farm.  
Before You Buy ANY Tractor  
Driven Alternator

DEMONSTRATED, INSTALLED AND SERVICED BY

## ELECTRIC MOTOR SERVICE & SALES

ELECTRIC MOTOR GENERATOR AND POWER TOOL SPECIALISTS

Next to Cloister Shopping Center

PHILADELPHIA, PA. 19104 Area Code 717 733-7911