

MARKET NEWS REPORT

At Lancaster Yards

Weekly Review

December 19, 1968

CATTLE 2100 — Compared to last weeks close, slaughter steers mostly steady, instances 25c lower on high-Good and low-Choice; cows \$1-2 higher; bulls steady; feeder steers steady. Supply includes an estimated 55 percent slaughter steers 20 percent cows and bulls with the balance mainly feeder steers.

SLAUGHTER STEERS — High-Choice and Prime 1100-1350 lbs 29 50-30, Choice 925-1300 lbs 28-29 50, few 1300-1500 lbs 27 35-28, high-Good and low-Choice 1000-1375 lbs 27 25-28 60; Good 950-1325 lbs 25 85-27 50 Standard and low-Good 22 75-25 60

SLAUGHTER HEIFERS — Choice 750-930 lbs 25 75 26 50; Good 21 85 24, Standard 20 10-22 10

COWS — Utility and high-dressing Cutter 19 25-21, few 21 10-21 60, Cutter 17 75-19 25, low-Cutter 17-17 75

BULLS — Choice 25 10-26 50 Good 23 25-25, Utility and Commercial 22 85-25, few 25-25 75, Cutter and low-Utility 20 60-22 85

VEALERS 500 — Closed the week steady, with Monday's \$2 advance on Standard to Choice being erased on Wednesday. Choice 42 50 45, several on Monday 45-47, Good 38 50-43, Standard 35-40, Utility 31-35, Cull 95-120 lbs. 26-31, 70-90 lbs 22 50-25

HOGS 1150 — Barrows and gilts steady to 50c higher, least advance on US 1-2 US 1-2 185-240 lbs 21-21 50; 11 head US 1, 215-225 lbs 22; US 2-3 200-260 lbs 20-20 50

SHEEP 150 — Woolled lambs strong to 50c higher. Ewes fully steady.

WOOLED LAMBS — Choice 65-95 lbs 26-28, Good 23 26. Utility 21-23

SLAUGHTER EWES — Utility and Good \$4-8

Warm Quarters

Swine and sheep breeders should prepare for cold weather by providing warm quarters for lambing and farrowing, many of the modern farrowing houses have heat so this is not a problem; but many others and many sheep producers do not have heated barns. Remember that about 30% of the pigs farrowed die before they reach market weight; many of these pigs die because of cold, damp, farrowing quarters the first few days. Buildings should be draft free, have as much sunlight as possible, and have some type of heat lamps or heat for areas where the pigs or lambs are to be born. Also, special care of the sow or ewe at the time of giving birth is very important.

AUTOMATION

Controlled Environment Cage Systems

Layer - Chick - Pullet Cage Feeders, Egg Collectors

E.M. HERR

EQUIPMENT, INC.

Willow Street, R. D. 1, Pa. 717 464-3321

See Our Unique Exhibit

Farm Show Space P3 & 4

Auction Only

December 18, 1968

CATTLE 717 — Compared to Monday, slaughter steers mostly steady, instances 25c lower on high-Good and low-Choice; cows \$1-2 higher; bulls steady on available supply.

SLAUGHTER STEERS — High-Choice and Prime 1100-1350 lbs 29 50-30, Choice 925-1300 lbs 28-29 50, few 1300-1500 lbs 27 35 28; high-Good and low-Choice 1000-1375 lbs 27 25-28 60, Good 950-1325 lbs 25 85-27 50, Standard and low-Good 22 75-25 60

SLAUGHTER HEIFERS — Choice 750-875 lbs 25 75 26, Good 21 85 23 85, Standard 20 10-22 10

COWS — Utility and high-dressing Cutter 19 25-21, few 21 10-21 60, Cutter 17 75-19 25, low-Cutter 17-17 75

BULLS — Good 23 25-24 85 couple Choice 25 10-25 60, Utility and Commercial 22 85-25 50 individual 27 35, Cutter and low Utility 20 60-22 85

VEALERS 142 — \$1-2 lower, with Cull steady. Choice 42 50-44 50; Good 38 50-43; Standard 35-40; Utility 31-35, Cull 95-120 lbs 26 50-31 70-90 lbs 22 50-26

HOGS 446 — Barrows and gilts steady to 50c lower, most decline on US 1-2

Vintage Auction

December 17, 1968

CATTLE 698 — Compared to last Tuesday, slaughter steers strong to 25c higher, with Good at the full advance; cows 25-\$1 higher; bulls fully steady on small supply. Supply included 26 percent cows.

SLAUGHTER STEERS — High-Choice and Prime 1000-1325 lbs. 29 75-30 50, six head 30 60-31; Choice 950-1400 lbs 28 35-29 85; high-Good and low-Choice 27 50-28 50; Good 26-28-25; Standard and low-Good 24-10-25 50

COWS — Utility and high-dressing Cutter 17 85-20 25, few 20 35-21 10, Cutter 16 75-19, Canner and low-Cutter 15 50-16 75

BULLS — Good 23 85-25 35; Utility and Commercial 23 75-24 75, couple 27 60-28, Cutter & low-Utility 21 75-22 60

VEALERS 533 — Steady to \$2 higher. Choice 43-45 50; Good 40-43; Standard 35-40. Utility 31 50-35, Cull 95-120 lbs 27 50-31, 70-90 lbs 25-29

HOGS 416 — Barrows & gilts (Continued on Page 3)

BARROWS & GILTS — US 1-2 185-240 lbs 21-21 50, 11 head US 1, 215-225 lbs 22; US 2-3 200-260 lbs 20-20 50; US 2-3 100-200 lbs 19 50-19 85.

SHEEP — None

FUTURES TRADING

(Closing bids as of Thursday, December 19, 1968)

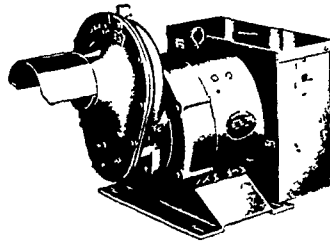
	Midwestern Live Cattle — Chicago	Live Hogs — Chicago	Maine Potatoes — New York
February	28.00	18.95	
March			2.56
April	27.07	18.50	2.68
May			3.25
June	26.75	19.90	
August	26.97	19.85	
November			2.38

a-asked b-bid n-nominal

Trend Cattle are stronger; Hogs are steady and Potatoes are weaker

WINPOWER TRACTOR DRIVEN ALTERNATORS

NO COMMUTATOR or DC BRUSHES TO CREATE SERVICE PROBLEMS



- Superior Motor Starting Ability
- Close Voltage Regulation
- Instantaneous Recovery To Rated Voltage With Sudden Load Application
- Electronic Rectification

INSIST on a WINPOWER DEMONSTRATION at YOUR Farm Before You Buy ANY Tractor Driven Alternator

WINPOWER

1800 RPM LOW SPEED HEAVY DUTY

DEMONSTRATED, INSTALLED AND SERVICED BY

ELECTRIC MOTOR SERVICE & SALES

ELECTRIC MOTOR GENERATOR AND POWER TOOL SPECIALISTS

Next to Claister Shopping Center

EPHRATA, PA. 17024 717 733 7911

New Holland Auction

December 19, 1968

CATTLE 782 — Compared to last Thursday, slaughter steers steady, instances 25c lower on high-Good and low-Choice; cows \$1-1 50 higher; Bulls mostly steady.

SLAUGHTER STEERS — High-Choice and Prime 1175-1425 lbs 29 60-30 75; Choice 900-1300 lbs 27 85-29 75, high-Good and low-Choice 27-28, Good 25-50-27 50; Standard and low-Good 22 75-25 50.

COWS — Utility and high-dressing Cutter 18 50-20 50, several 20 60-21 35; Cutter 17 50-19 25, Canner and low-Cutter 16-18.

BULLS — Choice 25-26 60; Good 23 35-25 25, Utility and Commercial 23 50-25 60, couple 26 35-26 50

VEALERS 437 — Standard to Choice steady to \$1 lower; Cull steady. Choice 43 50-46 Good 40-44, Standard 36-40. Utility 31-36; Cull 95-120 lbs 27-31, 70-90 23-27

SHEEP 9 — Insufficient volume for a market test

COWS December 18, 1968

Receipts of 147 cows and 6 heifers sold stronger. Holstein 425-835; Guernseys 260 360; Other breeds 350-400; Heifers 200-355.

HORSES December 16, 1968

Receipts of 272 head sold steady. Mules (pair) 460-900; (single) 150-240; Work horses (pair) 510-720; Riding horses 85-265; Driving horses 85-290; Pony mares 20-30; Geldings 15-20; Killers 4-5.

HOGS December 16, 1968

Receipts of 706 hogs sold steady. Retail 21 25-22 25; Wholesale 20-21 25; Heavyweights 18-20; Sows 13 50-15 25

CALVES December 16, 1968

Receipts of 117 calves sold steady. Choice and Prime 41-46;

NOTICE

The New Holland Sales Stables will cancel their Dairy Cow Auction, December 25th

The Vintage Sales Stables will start their sales 1 hour earlier, 12 30 p.m., December 24th and 31st.

The Lancaster Stock Yards will hold special livestock auctions Friday, December 27th and Friday, January 3rd, small stock at 11:00 a.m.; Bulls, Cows and Steers 12.00 Noon.

Good and L. Choice 38-40 50; Standard 33-37 50, Common 25-32 50.

Chicago Cattle Weekly Review

CATTLE — Compared with the previous Friday, slaughter steers steady to 25 lower, with most downturn on weights over 1150 lbs. Heifers generally 25 higher. Commercial cows steady, other grades 25-50 higher. Bulls strong to 50 higher.

Demand was good throughout the period. However on Wednesday, the outlet for weighty cattle for Eastern slaughter narrowed noticeably. Slaughter steers made up 77 percent of the supply with heifers 19 percent, the balance mainly cows. Overall finish of slaughter steers about like last week and last year, at 10 percent Prime and 80 percent Choice, overall finish of slaughter heifers mostly average Good to Average Prime 850-1050 lbs.

SLAUGHTER STEERS — On Wednesday, Prime 1200-1400 lbs. Yield Grade 3 and 4 30 25-30.75, load 1328 lbs. 31.00. Mixed High Choice and Prime 1100-1375 lbs. 29.25-30.25. Choice 950-1350 lbs. Yield Grade 2 to 4 steady. Choice and Prime 41-46; (Continued on Page 3)

VINTAGE SALES STABLES, Inc.

PARADISE, PENNA.

BULLS, STEERS, BUTCHER COWS, HOGS, LAMBS AND VEAL CALVES SOLD ON COMMISSION

SALE EVERY TUESDAY 1:30 P.M.

FAT HOGS AND FEEDER PIG SALE EVERY SATURDAY AT 10 A.M.

For Marketing Information Phone Area Code 717-442-4181

Box 100 Paradise, Pa. 10 mi. East of Lancaster on Rt. 30

Kenneth E. Hershey, Sales Manager

AUCTIONS MAKE THE DIFFERENCE IN MARKETING LIVESTOCK

NEW HOLLAND MAKES THE DIFFERENCE IN AUCTIONS

Monday — 10:00 A.M. Horse Sale

10:30 A.M. Fat Hogs and Shoats

2:30 P.M. Fat Steers, Bulls, Cows and Veal

Wednesday — 12:30 P.M. Dairy Sale

Thursday — 12:30 P.M. Fat Steers, Bulls, Cows and Veal

New Holland Sales Stables

New Holland, Penna.

717-354-2194

Abe W. Diffenbach, Sales Manager