

## ● Mystery Farm Contest

(Continued from Page 1)

ent area each week is published. The general direction from Lancaster is given and from there it's up to you.

Study the picture each week. Guess which of your neighbor's farm is pictured. Put your identification (the name on the mail box and his address) along with your own name and address on a 5 cent post card or in a letter and mail it each week so we receive it by Friday morning following the Saturday date of publication.

If you give us the correct farmer living on our Mystery Farm, your entry will be placed in competition with all other

correct answers at a drawing to be held at the end of the contest.

You or one of your neighbors will be receiving that \$100 check just after the beginning of the new year. So enter each week.

A complete list of the contest rules and our address where you send your entries is listed with the Mystery Farm each week. Be sure to follow them. We identify each Mystery Farm in the following issue.

That's all there is to it. This week we have a Western Lancaster County Farm. Hope you know it.

## Mystery Farm Contest Rules

1 The contest consists of eight weekly installments featuring the picture of a Lancaster County Farm, each from a different area of the County. Cash prizes will be awarded from a drawing of the correct entries following the contest. The awards will be: First Prize, \$100; Second Prize, \$50 and Third Prize, \$25.

2 All paid subscribers to Lancaster Farming are eligible. Subscribers may enter each week (8 times) but only one entry per week will be allowed.

3 To enter, study the enlarged photograph within the Mystery Farm Picture Frame in each issue. Guess which of your neighbor's farm is pictured. Put your identification (THE NAME ON THE MAIL BOX AND HIS ADDRESS) along with your own name and address on a five-cent post card or in a letter. (Note: the correct identification will be the person actually living on the farm.) Mail it to us so we have it in our office by Friday morning following the Saturday publishing date.

4 Entries must be mailed to our office address as follows: The Mystery Farm Contest, Lancaster Farming Newspaper, P.O. Box 266, Lititz, Pa. 17543. No phone calls will be accepted as entries.

5 Entries become the property of Lancaster Farming and the decision of the judges is final. Identification of the Mystery Farm will be published in each following issue.



THE ABOVE FARM SETTING was featured last week as the third in a series of eight Mystery Farms. It is the farm home of Mr. and Mrs. Donald E. Nolt and family, Manheim R1, located just south of Manheim along Route 72. The Nolts have four children, Caroline 9, Ronald 7, Joyce 6 and Kevin 1. They fatten 150 steers a year and have 50 brood sows.

The fourth Mystery Farm is pictured on Page 1 of this issue as the contest continues. Rules to enter are found with the photograph.

we recommend

**K D UPONT**  
**K ARMEX**<sup>®</sup>  
DIURON WEED KILLER

for weed control in alfalfa

- ECONOMICAL
- LONG LASTING
- EFFECTIVE
- EASY-TO-USE

**SEE US TODAY!**

**P. L. ROHRER & BRO., INC.**

Smoketown, Pa.

Phone 397-3539

## ● Esbenshade

(Continued from Page 1)

Ellis Mentzer, New Holland R2 was appointed the DHIA director and Milton Brubaker was named State Director.

In the business meeting, Victor Plastow, Associate County Agent, spoke on "Production of Quality Milk", and Frank Wilson, Field Representative from the National Ayrshire Association showed slides of a tour to South America.

Lewis Ayers, Vo-Ag teacher

## ● National FFA

(Continued from Page 5)

to keep up with some school work by correspondence courses.

With it all, though, Glenn keeps coming back to the farm.

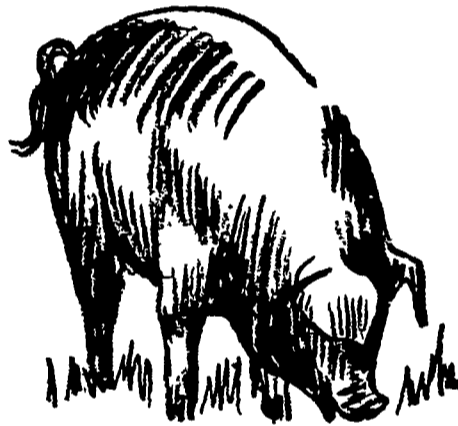
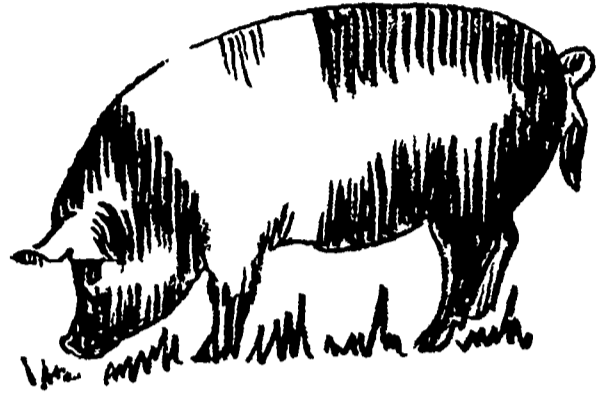
at Ephrata High School introduced his student, Earl Gerhart, who won the Ayrshire Calf at the Lampeter Fair earlier this fall. The calf came from Esbenshade's herd.

"I will be working here on our farm this summer," he said. In fact, I feel I will always have an interest in production agriculture, especially dairy production."

And Glenn weber, Lancaster County's National FFA Vice President and American Farmer has a good start in any phase of agriculture he chooses to follow.

Never try to sell a man anything except food when he's hungry.

## WHAT'S BEST FOR YOUR HOGS?



**Red Rose**  
has the answer!

It's these feeds —



Use the complete line of RED ROSE SWINE FEEDS to raise your pigs. Farrowing Ration for full feeding to sows before and after farrowing; Pig & Sow Pellets meets exacting nutritional requirements during late gestation, lactation and early growth; Pre-Starter Pellets with sugar concentrates and high antibiotic levels for young pigs; Pig Starter Pellets to supplement the sow's milk; Pig Grower Pellets for pigs 50 to 100 lbs.; Porkmaker, a complete feed for pigs 100 lbs. to market; and Hog Supplement . . . for feeding with your grain. Use these feeds and every one of your pigs will make money for you!

**Walter Binkley & Son**  
Lititz

**Brown & Rea, Inc.**  
Atglen

**Elverson Supply Co.**  
Elverson

**Henry E. Garber**  
R. D. 1, Elizabethtown, Pa.

**L. T. Geib Estate**  
Manheim

**I. B. Graybill & Son**  
Refton Strasburg

**E. Musser Heisey & Son**  
R. D. #2, Mt. Joy, Pa.

**Heistand Bros.**  
Elizabethtown

**A. L. Herr & Bro.**  
Quarryville

**David B. Hurst**  
Bowmansville

**Martin's Feed Mill, Inc.**  
R. D. 3, Ephrata, Pa.

**Mountville Feed Service**  
Mountville

**Musser Farms, Inc.**  
Columbia

**Musser's Mill**  
The Buck

**Chas. E. Sauder & Sons**  
Terre Hill

**Ammon E. Shelly**  
Lititz

**E. P. Spotts, Inc.**  
Honey Brook

**H. M. Stauffer & Sons, Inc.**  
Witmer