

Weekly Poultry Report

Eastern Pennsylvania And New Jersey

Broiler and fryer live prices averaged 15.39 cents a pound this week. Prices paid ranged from a high of 15.9 cents a pound on Monday and Thursday to a low of 15 cents a pound on the first three days of the week. Total sales were 567,600 head up 196,100 head from last week.

Eastern Shore Exchange

Prices of light type hens generally held unchanged, however the outside of the range less frequently being paid as live offerings continue to fill most needs. Offerings of heavy type hens about adequate for a fair but unaggressive interest. Prices paid at farm Light Type Hens 7 9/2 M 8-9, Heavy Type Hens 16-17 M 16c.

Fogelsville

December 3, 1968

(Prices paid dock weights, cents per lb., except where noted)

Light Hens 7 1/2-9 1/2, mostly 7 1/2-8 1/2; Heavy Hens 10-20, mostly 10-14; Pullets 10-32, mostly 22-26; Roasters 12-34, 20-26; Ducks 15-30; Drakes 25-37, mostly 30-37; Geese 30-32;

Rabbits 30-50, mostly 40-50; Guineas 55-69, mostly 69; Pigeons (per pair) 75-1.90, mostly 1.00-1.30. Total coops sold: 564

Ephrata Adult Farmers Set Beef Meetings

The Ephrata Adult Farmers have planned a series of Beef and Livestock Marketing meetings starting next Tuesday evening. The schedule is as follows:

December 10 —

Where To Market: Beef Marketing Examination Beef Management Practices Marketing and Management Discussion

Film "Meat on the Move"

December 17 —

Where To Market: (continued) Panel Discussion—Mr Bob Heilbron, commission man; Mr. Ken Hershey, auction representative; Mr. Carl Dalton, packer, and a country buyer

Market Selection and Comparisons Community Livestock Marketing Alternatives

Services, Costs, and Economic Returns

January 7—What To Buy: (2:00-4.00 p.m. at Lancaster Stockyards)

Film "Grading Feeder Cattle"

Adult Farmer Meeting Planned

The first of a series of adult farmer meetings of the new season for the Eastern Lancaster County Adult Farmer Program will be held on Wednesday, December 18th at 7:30 P.M. in the Lincoln Independent School Building near Martindale. The speaker for the evening will be John Yocum, Director of the Pennsylvania State University Tobacco Research Center at Landisville. Mr Yocum, well known in the field of tobacco research, will discuss the topics of tobacco management including the areas of seedbed management and diseases, new field diseases, chemical versus steam sterilization, chemical suckering, spraying for weed control, and the

(Continued on Page 9)

Cattle Grading—Mr. Jim Dunlap Tour Lancaster Stockyards Exchange

Cattle Grading Exercises and Discussion

January 14—When To Buy: Marketing Factors for Buying and Selling Livestock When to Buy Feeders

Using Market and Outlook Information

Yearly Cycles and Seasonal Trends

Evaluation of Market News — Mr. Ike Groff, Lancaster Livestock Reporter

January 21—When To Sell:

Weekly New York Egg Mkt.

(From Monday December 2nd to Friday, December 6th)

	Mon.	Tues	Wed.	Thurs.	Fri.
WHITE					
Fcy Ex Large	43	43 1/2	44	45	45 1/2
Fcy. Large	43	43 1/2	44	45	45 1/2
Fcy Mediums	40	40	40	41	41
Fcy Pullets	38	38 1/2	38 1/2	39 3/4	39 3/4
Fcy Peewees	27	27	27	27	27
BROWN					
Fcy Large	49 1/2	49 1/2	49 1/2	49 1/2	50
Fcy. Mediums	41	41	41	41	41
Fcy Pullets	38	38 1/2	38 1/2	39 3/4	39 3/4
Fcy Peewees	27	27	27	27	27
Standards	40	40	40	42	42
Checks	28 1/2-29	28 1/2	28 1/2	29 29 1/2	29 29 1/2

TREND — Market shows close clearance on large and medium Pullets are irregular

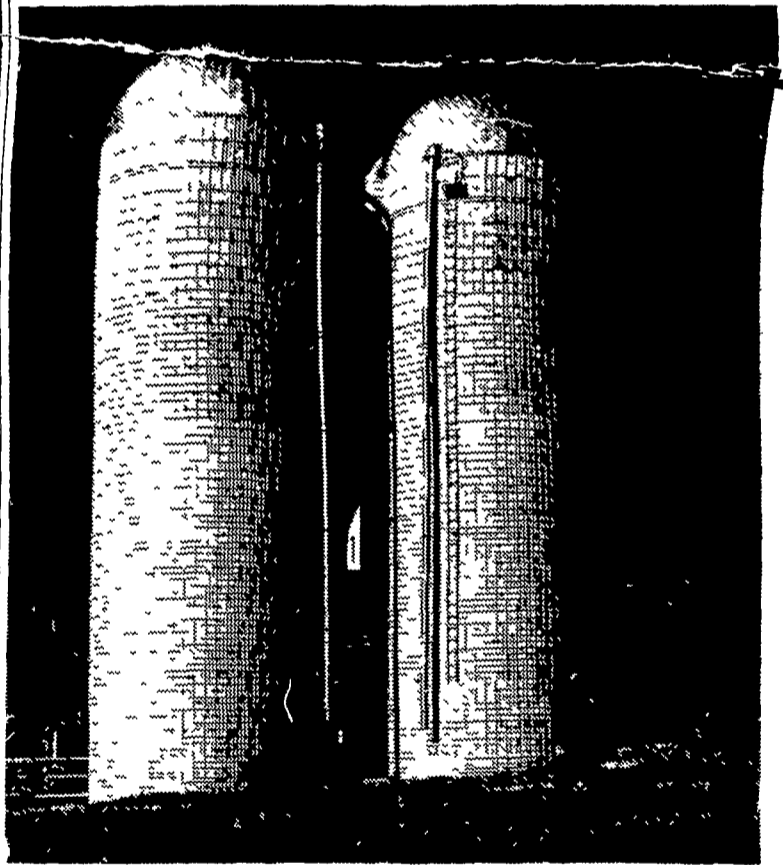
Copyright 1968 by Urner Barry Publications

Factors Affecting When to Sell How Are Profits Determined What Are Buyers Looking For Importance of Proper Handling of Livestock Discussion — Mr Jim Dunlap, Union Stockyards representative Film "Beef Rings The Bell" Beef Marketing Examination

All of the classes will meet on Tuesday evenings at 7:30 p.m. in the Ephrata High School Agriculture Department except the meeting on January 7th. This will be an afternoon meeting, 2:00-4:00 p.m., at the Lancaster Stockyards. The group will leave from the Ag Dept. at 1:30 p.m.

Your Best Buy...

A CONCRETE STAVE SILO



Save Money on Feed Costs . . . Farm Easier, More Profitably . . .

Save Time, Work & Money On Your Farm

Get Your Discount Now For Early Orders.

For complete information and prices see us before you buy.

C. B. HOOBER & SON
Intercourse Pa.
717-768-3501

NEVIN N. MYER
Chestet Springs Pa.
215 827-7481

AGRI INC.
Ephrata R2. Pa.
717-354 5374

COPE & WEAVER CO.
New Providence Pa.
717-786-7351

C. H. ZIMMERMAN
Atglen, Penna.
215-593-5129

MANUFACTURED BY

LANCASTER SILO COMPANY

2436 Creek Hill Road, Lancaster, Pa. 17601

choose a



Bee-Line Supply Center

AUTOMATIC cattle feeding systems

SPECIAL DISCOUNT Now Thru Jan. 1st

- Barn Cleaners • Barn Equipment
- Bunk Feeders • Silo Unloaders • Conveyors
- Sunset Bulk Milk Coolers
- Complete Automation ... Only from Agway

• you get a firm bid

- your project is backed by a farmer - owned organization with many years of farm experience and well trained men who know the automation business
- responsibility for the entire job is centered in one place -- your Agway Supply Center
- competent guidance and advice in picking out equipment, and planning the complete operation . . . from selecting the site, through figuring hay storage space, to helping you determine the type of barn cleaner or milking parlor stall you need

INSTALLATIONS & SERVICE BY TRAINED & EXPERIENCED PERSONNEL



BEE-LINE SUPPLY CENTER

1027 Dillerville Road, Lancaster
24 Hour Service Daily — Ph: 397-4761