

SHUT DOWN? DELAYED? ... BECAUSE OF ELECTRIC POWER FAILURES OR JOBS AWAY FROM LINES?

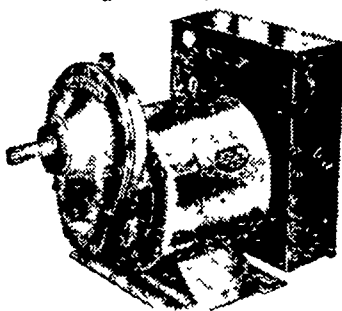
STANDBY POWER

Reliable electric power units come on automatically during those crippling emergencies. Low-cost gasoline or diesel systems from 600 watts to 100 KW. 39 years of experience at **WINPOWER**

PORTABLE POWER

Cut construction costs with most economical on-the-job source of electric power—portable hand-carry or two-wheel-dolly generators starting at 600 watts.

WINPOWER Newton 8, 1000 U.S.A.



L. H. BRUBAKER

R. D. 3, Lititz, Pa.
350 Strasburg Pike, Lanc.
Phone: Lanc. 397-5179
Strasburg 687-6002
Lititz 626-7766

New Meat Inspectors Assigned To Lancaster; Fifteen Others

The Pennsylvania Department of Agriculture's first graduating class of meat inspectors has been assigned to slaughtering and processing plants in 16 counties

State Agriculture Secretary Leland H. Bull said the inspectors — 25 of them — have been assigned to plants which formerly operated under voluntary inspection

A State meat inspection law, which became effective five months ago, makes it mandatory that all meat and meat plants in Pennsylvania be inspected. Formerly, the only plants inspected were federally inspected plants doing interstate business and those which voluntarily asked for state inspection.

Secretary Bull said additional inspectors will begin work as soon as they complete training which consists of two weeks special schooling at Penn State's College of Agriculture and seven weeks on-the-job training at federally inspected meat plants. He said the State Agriculture Department expects to have 112 meat inspectors trained by next June.

He said he was "pleased" that the Agriculture Department was able to have meat inspectors performing their jobs in November. "We've made much progress in a short period of time," he said. "The meat inspection bill was only signed into law July 9."

The first group of inspectors have been assigned to 60 plants

in Allegheny, Berks, Blair, Bucks, Dauphin, Lackawanna, Lancaster, Lebanon, Lycoming, Luzerne, Montgomery, Montour, Northumberland, Perry, Philadelphia and York counties.

At the plants, inspectors check livestock before slaughter to make certain the animals are

healthy. Post-mortem examinations are made on carcasses. Where abnormalities are found, a veterinarian is called in to make final disposition.

Inspectors also check ingredients, formulas and cooking temperatures at processing plants.

Secretary Bull said inspectors will insist that all meat plants be operated under sanitary conditions. He said inspectors have been instructed to close down plants which fail to meet sanitary requirements.

● Farm Calendar (Continued from Page 1)

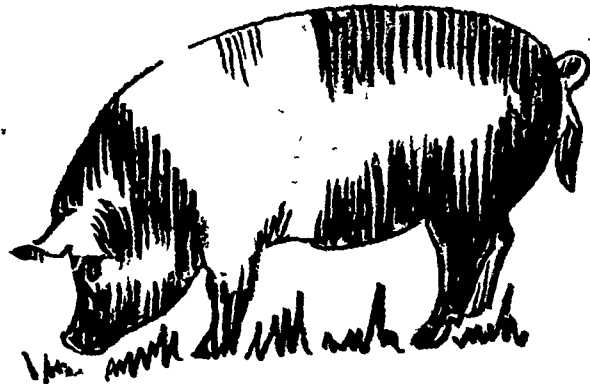
Wednesday, Dec. 4

4:30 p.m. — County Vo-Ag Teachers meet, Penn Manor High School.

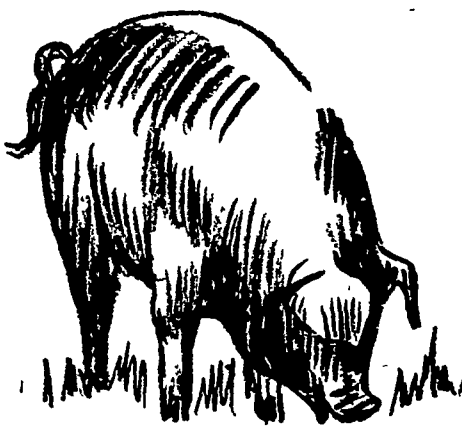
Thursday, Dec. 5

8:00 p.m. — Lancaster County Poultry Assn. Board meet, Farm and Home Center.

WHAT'S BEST FOR YOUR HOGS?



**Red Rose
has the answer!**



It's these feeds —



Use the complete line of **RED ROSE SWINE FEEDS** to raise your pigs. Farrowing Ration for full feeding to sows before and after farrowing; Pig & Sow Pellets meets exacting nutritional requirements during late gestation, lactation and early growth; Pre-Starter Pellets with sugar concentrates and high antibiotic levels for young pigs; Pig Starter Pellets to supplement the sow's milk; Pig Grower Pellets for pigs 50 to 100 lbs.; Porkmaker, a complete feed for pigs 100 lbs. to market; and Hog Supplement . . . for feeding with your grain. Use these feeds and every one of your pigs will make money for you!

Walter Binkley & Son
Lititz

David B. Hurst
Bowmansville

Brown & Rea, Inc.
Atglen

Martin's Feed Mill, Inc.
R. D. 3, Ephrata, Pa.

Elverson Supply Co.
Elverson

Mountville Feed Service
Mountville

Henry E. Garber
R. D. 1, Elizabethtown, Pa.

Musser Farms, Inc.
Columbia

L. T. Geib Estate
Manheim

Musser's Mill
The Buck

I. B. Graybill & Son
Refton Strasburg

Chas. E. Sauder & Sons
Terra Hill

E. Musser Heisey & Son
R. D. #2, Mt. Joy, Pa.

Ammon E. Shelly
Lititz

Heistand Bros.
Elizabethtown

E. P. Spotts, Inc.
Honey Brook

A. L. Herr & Bro.
Quarryville

H. M. Stauffer & Sons, Inc.
Witmer

MAKE CHRISTMAS DREAMS COME TRUE Give John Deere Toys

Be a hero. Give him (or her) a pedal-driven John Deere Riding Tractor. It's rugged . . . realistic . . . easy to ride, easy to steer. Matching trailer also available. We offer a complete line of John Deere 1/16 scale-model toys—tractors, bulldozer, wagons, new baler . . . other implements including multiple-toy farm sets. Fulfill your youngsters' dreams with fun-filled gifts that keep on giving all year long. Stop in now!

SHOP WITH US FOR CHRISTMAS!



CHECK OUR COMPLETE SELECTION OF QUALITY JOHN DEERE TOYS

A. B. C. Groff, Inc.
New Holland 354-4191

Shotzberger's
Elm 665-2141

M. S. Yearsley & Sons
West Chester 609-2990

Wenger Implement Co.
Buck 284-4467

Landis Bros. Inc.
Lancaster 393-3906