

# Weekly Poultry Report

Eastern Pennsylvania  
And New Jersey

Fogelsville

November 19, 1968

Prices of light type hens continues unchanged. Demand good. Offerings continue light as producers hold for currently good egg prices, unless forced to sell in order to refill with replacement pullets. Demand good for very limited offerings of heavy type hens. Buyers interest centered on holiday items with limited movement of capons at 25c less gradeouts, geese at 30c. Offerings of roasters ample for available processing time with a good assortment of sizes reported.

Prices paid at farm: Light types hens 7-9½; Heavy type hens 7fwer.

(Prices paid dock weights, cents per lb., except where noted)  
Hens, Light Type 7-9½, mostly 7½-8; Hens, Heavy Type 8-17½, mostly 10-14; Pullets 21-36, mostly 28-30; Roasters 12-33½, mostly 23-28; Ducks 11-27; Drakes 11-49, mostly 35-45; Geese 18-35, mostly 30-34; Turkeys, Hens 25-35½; Rabbits 28-49, mostly 38-43; Guineas 60-78½, mostly 64-72; Pigeons (per pair) 90-2.50, mostly 90-1.20.  
Total coops sold: 1307.

## Chicago

(Continued from Page 2)

SLAUGHTER STEERS — Prime 1225-1350 lbs. Yield Grade 3 and 4 30.00-30.50, load 1440 lbs. Yield Grade 4 30.65 on Wednesday, Mixed High Choice and Prime 1150-1350 lbs. 29.00-30.00, Choice 950-1350 lbs. Yield Grade 2 to 4 27.75-29.00, 28.00.

Mixed Good and Choice 27.00-29.00.  
SLAUGHTER HEIFERS — High Choice and Prime 950-1025 lbs. Yield Grade 3 and 4 27.25-27.75, Choice 825-1025 lbs. Yield Grade 2 to 4 26.25-27.25, Mixed Good and Choice 25.50-26.25.

## Auction

(Continued from Page 2)

00-25.35: Cutter and low-Utility 20.50-22.25.

FEEDER STEERS — Part-load Choice and Prime with Good to low-Choice slaughter finish 900 lbs. \$27.00; Choice 900-1025 lbs. 24.75-26.00.

VEALERS 108 — Steady to mostly \$1.00 lower.

VEALERS — Choice 42.00-44.50; Good 39.50-42.50; Standard 36.00-39.50; Utility 30.00-36.00; Cull 95-125 lbs. 26.00-31.00, 70-90 lbs. 21.00-25.00.

HOGS 401 — Barrows and gilts 50c lower.

BARROWS AND GILTS — US 1-2 195-220 lbs. 20.50-21.00 US 2, 200-245 lbs. 19.25-19.50 US 2-3 195-270 lbs. 18.50-19.10.

SHEEP 40 — Woolled lambs and slaughter ewes steady.

WOOLED LAMBS — Good 75-100 lbs. 22.00-24.50.  
SLAUGHTER EWES — Utility and Good 4.50-6.00.

## Vintage

(Continued from Page 2)

44.50; Good 39.50-42.50; Standard 35.50-40.00; Utility 31.00-36.50; Cull 95-120 lbs. 26.50-31.00, 70-90 lbs. 22.00-27.50.

HOGS 388 — Barrows and gilts mostly steady.

BARROWS AND GILTS —

Lancaster Farming, Saturday, November 23, 1968—3

# Weekly New York Egg Mkt.

From Monday, November 18th to Friday, November 22nd

	Mon.	Tues	Wed.	Thurs.	Fri.
<b>WHITE</b>					
Fcy. Ex. Large	46-47	46	45½-46	45-46	45-46
Fcy. Large	46	46	46	46	46
Fcy. Mediums	42½	42½	42½	42½	42½
Fcy. Pullets	35	37	38	39	39
Fcy. Peewees	26	27	28	29	27
Standards	42	42	42	42	42
Checks	28½	28½	28½	28½	28½
<b>BROWN</b>					
Fcy. Large	47½	47½	48	49	49
Fcy. Mediums	42½	42½	43	44	44
Fcy. Pullets	35	37	38	39	39
Fcy. Peewees	26	27	28	29	27

Trend — Extra Large and Jumbo are slow to clear and discounted. Large, Medium and Small are generally in good balance.

Copyright 1968 by Urner Barry Publications

## New Holland

(Continued from Page 2)

US 1-2 200-220 lbs. 20.00-20.85  
US 2, 200-230 lbs. 19.50-19.85  
US 2-3 190-250 lbs. 18.50-19.25  
US 3, 230-265 lbs. 18.00-18.35.

Heavyweights 18-19; Shoats 8.50-14; Sows 12-15.75

SOWS — US 1-3 360-510 lbs. 14.00-15.00.

SHEEP 77 — Woolled lambs steady to \$1.00 higher; Ewes mostly steady.

WOOLED LAMBS — Choice 70-95 lbs. 28.50-30.00 few Prime 30.50-32.00; Good 24.00-26.00.

SLAUGHTER EWES — Utility and Good 5.00-7.50, few Cull 3.50-5.00

## CALVES

November 18, 1968

Receipts of 148 calves sold \$1-2 lower. Choice and Prime 38-44; Good and L Choice 32-37; Standard 26-31.50; Common 15-25.

Money makes us comfortable, but it doesn't always make us happy

## Eastern Shore Exchange

Broiler and fryer live prices averaged 14.41 cents a pound this week. Prices paid ranged from a high of 15.7 cents a pound on Monday to a low of 13.4 cents a pound on Wednesday. Total sales for the week were 497,000 head up 171,200 head from last week.

Try A Classified Ad

# 2,788 lbs. of pork to market from one litter in 156 days

That's the performance story of a litter of 13 pigs raised at Ful-O-Pep Research Farm. You can probably match or top this record by following the precision, maximum efficiency Ful-O-Pep program on your farm.

**Ful-O-Pep proving ground**  
Here's how the 13-pig litter progressed. Litter was weaned at 3 weeks. At 4 weeks the pigs averaged 23 lbs. each. Weighed again at 58 days of age, they averaged 50 lbs. At 156 days of age they topped the market averaging 215 lbs. per pig for a total of 2,788 lbs. Good hogmen and swine nutritionists know that such fast growth is necessary for maximum feed efficiency and profits.

## Maximum efficiency feeding program

Ful-O-Pep research has both the maximum efficiency feeds and feeding recommendations hogmen need these days for top profits. Here's the normal weaning plan:  
6th day to 3 wks. use 3 lbs. Ful-O-Pep Gro Pig Pre-Starter per head.  
3 wks. to 6 wks. use 12 to 15 lbs. of Gro Pig Starter Bracer per pig.  
6 wks. to 10 wks. feed 50 to 60 lbs. Gro Pig Grower per head.  
10 wks. to market use Gro Pork 280 and figure 270 to 290 lbs. feed per 100 lbs. of gain.

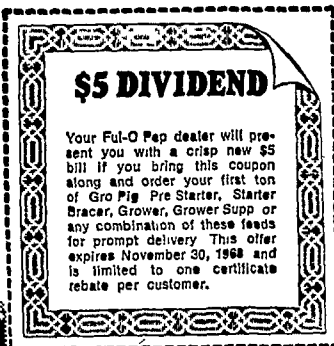
For early weaning, the Gro Pig Pre-Starter is fed longer, from 6th

day until pigs consume 10 lbs. each . . . then continue them on the feeding program above. Finishing on Gro Pork 280 has often produced gains of 2.1 lbs. per head per day when fed to thrifty pigs from 60 lbs. on to marketing.

The precision of Ful-O-Pep programming gives pigs the right balance of nutrients when they need it. Ful-O-Pep aims to meet the absolute needs of pork producers who figure exact costs and profits from every phase of their operation.

**Ful-O-Pep feeder reports 2.35 conversion**  
One Iowa hogman tested the Ful-O-Pep program on a lot of 62 pigs. His detailed records show a feed conversion for the entire program from birth to market of only 2.35 lbs feed per pound of gain. You may do even better . . . and collect a \$5 dividend for trying these fine hog feeds.

LAST  
CHANCE!



**FUL-O-PEP FEEDS**



S. H. Hiestand & Company

Salunga

Grubb Supply Company

Elizabethtown

Stevens Feed Mill, Inc.

Stevens

Stevens Feed Mill, Inc.

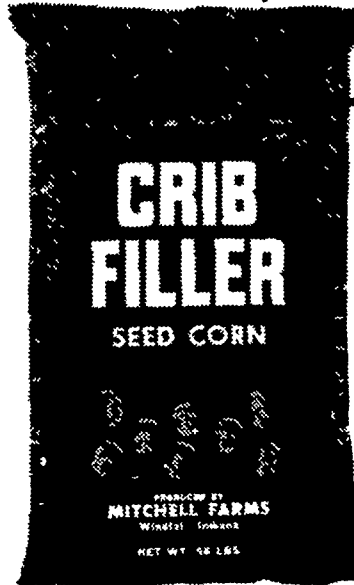
Leola

Harold H. Good

Terre Hill

# CRIB FILLER 1969

*Memo to Mr. Producer:*  
*This is important!*



For complete details on the profit potential from Crib Filler

See your local Crib Filler dealer below:

FARMERS SUPPLY CO.  
Lancaster

F. M. BROWN'S  
SONS, INC.  
Sinking Spring

MUSSER'S MILL  
The Buck

WEAVER'S  
FIX-IT SHOP  
R D. New Holland

KIRKWOOD  
FEED & GRAIN  
Kirkwood

E. H. KEEN & SON  
Parkesburg

MARTIN'S  
FEED MILL, INC.  
R. D. Ephrata

H. H. GOOD MILL  
Fivepointville

GEHMAN  
FEED MILL, INC.  
Denver

DUTCHMAN  
FEED MILLS, INC.  
Mt. Airy

LANCASTER BONE FERTILIZER CO., INC.  
Quarryville

BOMBERGER'S STORE  
Elm

STANFORD SEED CO.  
Box 230, Plymouth Meeting, Pa. 19462