

Lancaster Farming

VOL. 13 NO. 51

Lancaster Farming, Saturday, November 16, 1968

\$2.00 Per Year

\$175. CASH PRIZES

Mystery Farm Contest

The Mystery Farm Contest makes its debut this week on the pages of Lancaster Farming. And what a contest it is! The subscriber winning first prize will receive a personal check for \$100. That's right — \$100. And second and third place winners will be awarded \$50 and \$25 checks respectively.

Here's how it works. Each week for the next 8 issues, a photograph of a Lancaster County Farm will be enlarged and published within the Mystery Farm Picture Frame somewhere on the pages of Lancaster Farming. The Mystery Farms will be from 8 different areas in Lancaster County and the general direction from Lancaster will be given.

From there on it's up to you. Study the picture each week. Guess which of your neighbor's farm is pictured. Put your identification (the name on the mail box and his address) along with your own name and address on a 5 cent post card or in a letter and mail it each week so we receive it by Friday morning following the Saturday date of publication.

If you give us the correct farmer living on our Mystery Farm, your entry will be placed in competition with all other correct answers at a drawing to be held at the end of the contest.

You or one of your neighbors will be receiving that \$100 check just after the beginning of the new year. So enter each week.

A complete list of the contest rules and our address where you send your entries will be listed with the Mystery Farm each week. Be sure to follow them. Of course, we will identify each Mystery Farm in the following issue.

So, the local contest worth a total of \$175 is on. This week we start with a Southern Lancaster County Farm. Best wishes everyone.

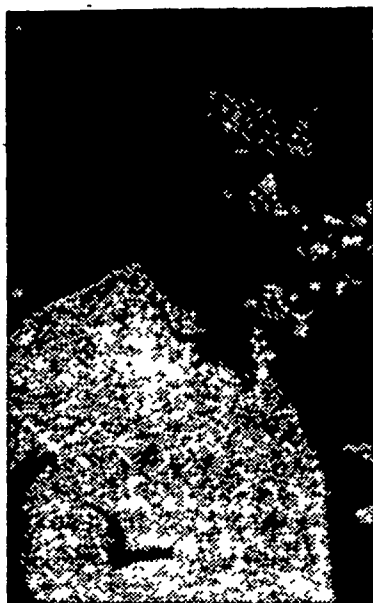
Mystery Farm Contest Rules

1. The contest consists of eight weekly installments featuring the picture of a Lancaster County Farm, each from a different area of the County. Cash prizes will be awarded from a drawing of the correct entries following the contest. The awards will be: First Prize, \$100; Second Prize, \$50 and Third Prize, \$25.

2. All paid subscribers to Lancaster Farming are eligible. Subscribers may enter each week (8 times) but only one entry per week will be allowed.

3. To enter, study the enlarged photograph within the Mystery Farm Picture Frame in each issue. Guess which of your neighbor's farm is pictured. Put your identification (THE NAME ON THE MAIL BOX AND HIS ADDRESS) along with your own

(Continued on Page 6)



Ivan R. Yost

Yost And Krantz Named At State YF Convention

Two Lancaster County Farmers were given state honors this week at the Pennsylvania Young Farmers Association Annual Convention held at Williamsport.

Ivan R. Yost, Christiana R1 was named president of the 1,400 member PYFA Thursday and Willis B. Krantz, Quarryville, was named the 1968 Region II "Outstanding Young Farmer".

Yost moved up to the state top position from vice president of Region II. He is a dairy farmer with a herd of 60 Registered Holstein Cows.

In his new post, Yost will travel statewide promoting the PYFA and will attend the

(Continued on Page 8)

Lancaster 4-H Herefords Win Jr. Livestock Expo.

Harrisburg—A group of five Lancaster County 4-H steer enthusiasts led their Hereford projects to the top in the County Club Class here Monday afternoon at the 12th Annual Pennsylvania Livestock Exposition being held in the massive Farm Show Building. The win was

over five Angus steers from Chester County that local experts called very fine steers but not as uniform in type as the local entries. York County followed Chester in this class and Cumberland County was fourth.

In all, 39 local 4-H youths and 2 FFA members led their Angus, Hereford and Shorthorn entries in crowded classes numbering up to 38 steers before judge Herman Purdy, University Park, Pa.

Individual honors were recorded by Sheryl and Sharon Weaver, New Holland R1, when their 1,000 pound Hereford entry named Hergus, placed first in the Junior Yearling Class. The red, white-face steer later was named breed reserve grand champion and was picked for the local winning club group.

(Continued on Page 9)

Holstein Assn. Has Banquet; Elects Officers

The directors of the Lancaster County Holstein Association reorganized Wednesday night following the Association's 18th Annual Banquet held at the Dutch Town and County Inn at Paradise. The new officers are: President, Clarence Stauffer, Ephrata R1; Vice President Jay Landis, Lancaster R6; Secretary Richard Hershey, Lititz R1 and Treasurer John Kreider, 523 Willow Road, Lancaster.

Stauffer and Landis along with Robert Kauffman, Elizabethtown R1, were elected as directors for three years in the business meeting.

Featured speaker for the

(Continued on Page 5)

Pitzer Elected PFA President

John R. Pitzer of Aspers, Pa., was elected president Wed. of the Pennsylvania Farmers' Association (PFA) at the organization's 18th annual meeting at the George Washington Motor Lodge, Allentown.

Pitzer, an owner of Pitzer Bros. Fruit Farms, Inc., was formerly the PFA's vice president, and replaces Gerald A. Biggs of McConnellsburg, who did not seek reelection after sixteen years as president.

Warren Lamm, Sinking

(Continued on Page 8)

Dairy Barn Remodeling Tour Thursday, Nov. 21

A dairy barn remodeling tour will be conducted next Thursday, November 21, according to Victor Plastow, Associate Lancaster County Agent. It will

(Continued on Page 7)

