



Peace Corps Volunteer Michael E. Gill, 23, of Wayne, Pennsylvania, Delaware County, does agricultural extension work at the village level in Nepal. He works in the Jonakpur area in the Terai and lives in the village of Basai, a five miles from the Indian border. There are about 2000 people in the village. Here he discusses a new blight that has hit the rice with a villager and tries to determine what caused it. Gill graduated from Villanova University, where his father is professor, with a B.A. in history.

More than 1500 Peace Corps Volunteers are serving in programs to increase food production according to Director Jack Vaughn. In all, Volunteers now serve in 95 skill specialties in 59 nations.

● ADA

(Continued from Page 1)
men have put into effect. For

Robert K. Rohrer

**Bulldozing - Grading
Patz Sales & Service**

**Barn Cleaners - Silo
Unloaders - Cattle Feeder-**

**Quarryville, R. D. 1
Hensel 548-2559**

the first time in over two years, milk sales in Order #2 have increased. With the majority of dairymen now investing in milk promotion, there is no doubt but what the months to come will show some dramatic patterns in increased sales and utilization of Class I milk."

In addition to those elected, other committeemen making up the District #18 local board include Russel E Cassel, Hummelstown; Earl Patches, Annville; Mark Wagner, Hummelstown.

**Eggs Show Healthy
Second Half Gains**

For the first time in a long time, farmers' egg prices are showing improvement.

The U.S. farm price of eggs averaged 34.1 cents a dozen in August. This was 4.2 cents over a year earlier.

And by early September, Chicago wholesale prices reached a peak of 55.0 cents a dozen for 80 percent Grade A Large eggs.

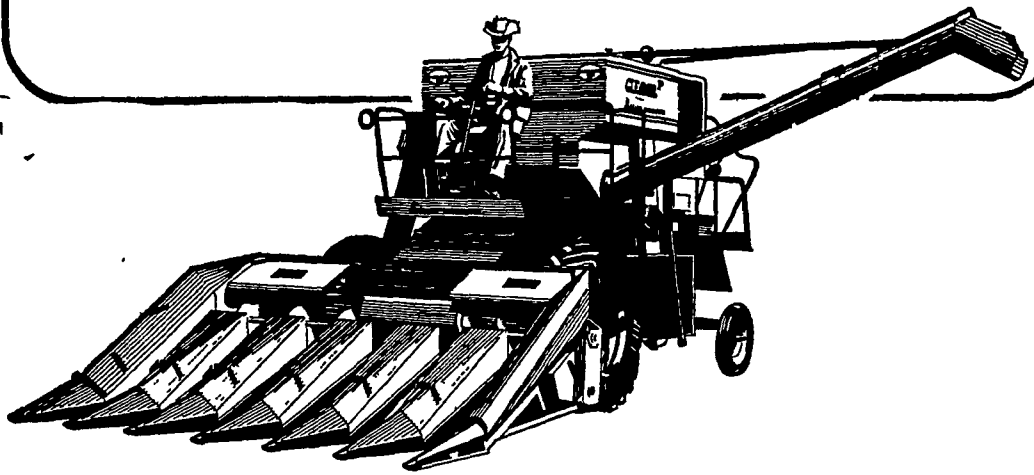
This trend is expected to continue through the rest of the year, with farm egg prices 4 to 8 cents over those in the last half of 1967. But only slightly above 2 years ago.

The rise should help offset severely depressed first half prices which averaged 29.6 cents a dozen (2 cents below first half 1967 and 4 cents off the 5-year average.) Egg production dropped and prices improved sharply, jumping from 27.0 cents a

dozen to the 34.1 cent August price. Some price strength resulted from USDA purchase programs for scrambled egg mix. First half production was 1 percent over 1967's high first half — the largest first half since 1944. But by the end of 1968 production may drop to a level as low as 5 percent below fourth quarter 1967.

Everybody can talk, but few can talk to the point.

**MORE CAPACITY
EVERYWHERE IT TOUCHES THE CROP**

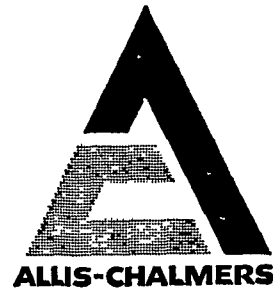


MODEL F GLEANER

The Model F Gleaner combine is new and bigger this year so that you will profit more.

- Bigger cylinder—37½ inches.
- Bigger separating area. 6,875 sq. in. (with walkers extended)
- Bigger cleaning capacity—3,441 sq. in.
- Bigger wing-type grain bin—77 bushels.
- Bigger capacity elevator.
- AND bigger operator platform, bigger engine, bigger tires, bigger axles, bigger cab, larger wheel base.
- More crop combine versatility than all the others: 13'—15'—17' Grain Headers.
- Corn Heads: 2-row 40", 3-row 40", 4-row 40"; 4-row 35"; 4-row 30", 3-row 30"; 6-row 20"

Here's where you get top combine performance. Financing tailor-made for you.



L. H. Brubaker
Lititz, Pa.

Nissley Farm Service
Washington Boro, Pa.

N. G. Myers & Son
Rheems, Pa.

Allen H. Matz Farm Equipment
New Holland

Grumelli Farm Service
Quarryville, Pa.

Roy H. Buch, Inc.
Ephrata, R. D. 2

L. H. Brubaker
Lancaster, Pa.

**FEED CATTLE FASTER
AND MORE EFFICIENTLY
THAN EVER BEFORE!**



NOW! Feed up to 200' of bunk per drive . . . Feed multiple lots . . . Blend complete rations with . . .

VAN DALE'S NEW AUTOMATIC MULTI-FEEDERS

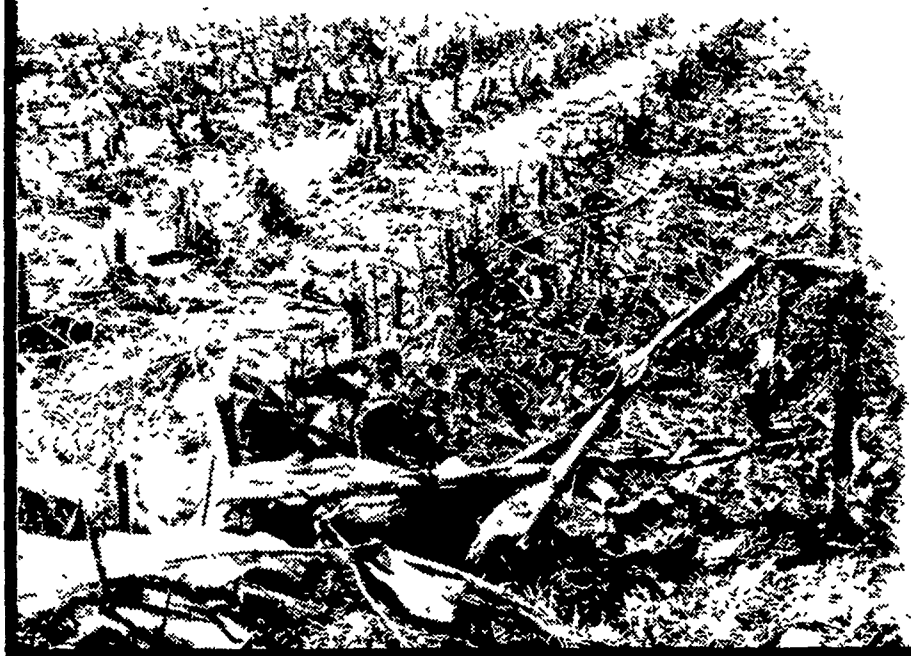
From the pioneer in silo unloading, come two low-power, mammoth capacity, bunk feeders for in-the-barn or feedlot feeding. You can feed from more than one silo (at the same time). Feed out to from one to four-or-more lots. Feed any material with big 9" or 12" true, bearing-suspended augers, (no metal-to-metal contact.) Feed entire bunk at one time; eliminate crowding.

High capacity and dependability . . . call us and we'll come out to see you, at your convenience.

CALEB M. WENGER

R. D. 1, Drumore Center 548-2116 QUARRYVILLE, PA.

TIRED, EXHAUSTED



WHAT IS NEXT?
Hasn't been so long since
Most farm laborers
But what of the future?
Your soil has been
It always does
There's barely anything
left to give as
So add manure
you say. Okay
to be done. To
cheat your profit
what it really