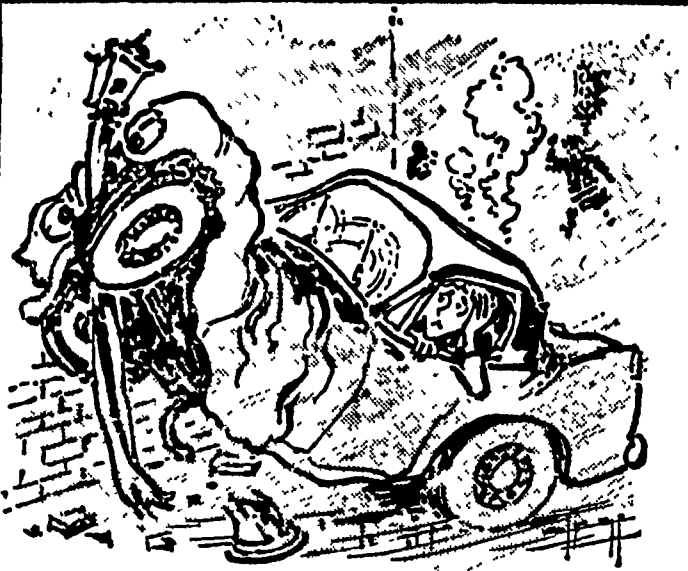


WINTER WOES by Purson



*She could see outward only in peeks,
Dead wiper blades causing the streaks
That she had to look through—
And which hampered her view—
Now her car won't be fixed up for weeks!*

PREVENT THOSE WINTER DRIVING WOES

The Safe Winter Driving League presents the following tip for safer winter driving from the National Safety Council: "Don't be a 'peep-hole pilot.' Brush snow completely off front, back and side windows. Replace dead wiper blades with live, new ones to prevent streaking. All your lights should be working, with headlights aimed properly. You must see danger to avoid it."

A prominent traffic court isn't in fact it's only the beginning," Judge Porter continued. "Sleet, snow, icy pavements, fog and longer periods of darkness make a different ball game out of wintertime driving. They call for different rules.

"Of course everyone put antifreeze in his radiator. In northern states that's an absolute necessity. But too many motorists seem to think that's enough preparation for winter, and it's not. First and foremost, traction and visibility call for additional provisions," said Judge Porter, who has long been a member of the National Safety Council's

Committee on Winter Driving Hazards.

"Winter traction depends on your tires. Make sure of the condition of your treads whether you intend to use regular tires, snow tires or studded tires this winter. In any case, for severe snow and ice conditions, be sure to have tire chains in the trunk that fit your tires.

keep the windshield, as well as the side and rear windows, clear of snow and ice at all times, regardless of the weather. Check all lights including the directional signals to be sure they are operating. Keep the windshield clear with non-streaking wipers outside and a defroster that works inside.

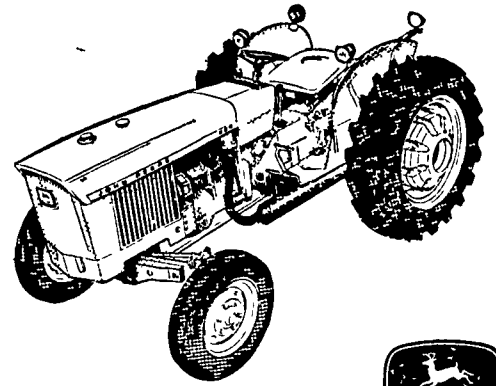
"Pay attention in advance to your battery, brakes, heater and

defroster and exhaust system," Judge Porter continued. "Put a bucket of sand and a shovel in your trunk, also some flares and a tow chain. All this sounds like a lot of bother. But I have presided at many accident cases where the people in trouble would have given anything for another chance to prepare properly for driving under winter conditions."

Go small tractor in a big way...

WITH THE NEW 31-H.P.* JOHN DEERE 820

The new 31-h.p. John Deere "820" Tractor defies a label. Utility work, tillage and haying operations, row-crop, hill and orchard assignments—this tractor handles them all and more. A 3-cylinder variable-speed Diesel engine and 7-speed transmission let you match performance to the job. Here's a tractor that pays its way on any size acreage; one which handles every type of operation as though it were born specifically to it. The new "820" is loaded with John Deere quality and extra value, packed with modern effort-saving features, and sports a price tag that will scarcely ripple your budget. Stop in soon and make a date to drive the new "820" Tractor. *31 h.p. observed at the PTO at 2,100 engine rpm (factory estimate)



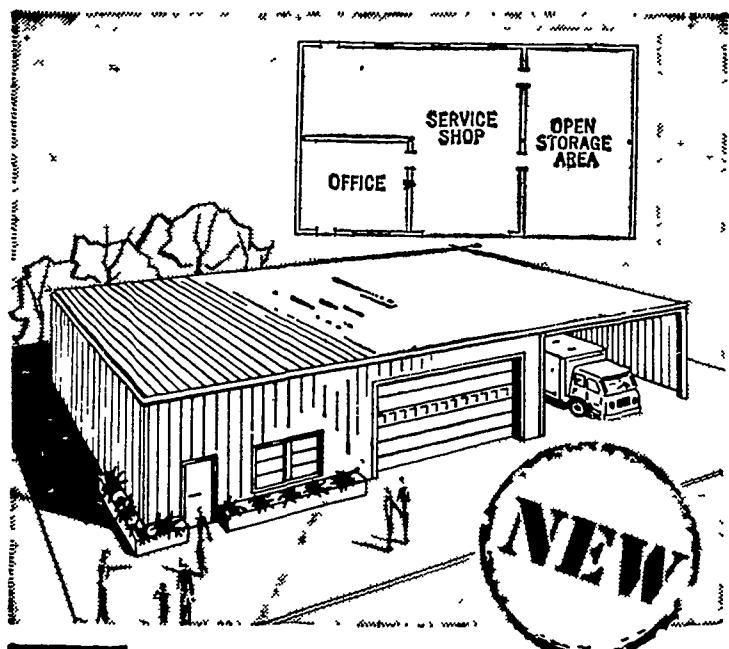
Landis Bros. Inc.
Lancaster 393-3906

Shotzberger's
Elm 665-2141

A. B. C. Groff, Inc.
New Holland 354-4191

Wenger Implement Co.
Buck 284-4467

M. S. Yearsley & Sons
West Chester 609-2990



**BEHLEN
TOWN and COUNTRY**

low-cost all-steel building for all-around uses

Built of 3" corrugated steel (with tremendous strength), the all-new Behlen Flat-Top fills town and rural needs for an all purpose, low-cost building. The attractive weather tight Flat Top makes an ideal implement shelter, store, machine shop, office, milking parlor, draft-proof farrowing house, meeting hall, etc.

COME IN AND SEE the new Flat Top. Each building unit is approximately 35 feet by 21 feet. With either a 10 foot or 14 foot wall. Several units may be erected together to form one large building. Easily expanded at any time. Wide selection of doors and window styles available.

The Price is Right at...

FREY BROS.

Fred Frey, Mgr.

R. D. #2, Quarryville, Pa. 17566
786-2235 (717)



**CHRISTIANA MILK
PRODUCTS CO.**
Christiana, Penna. 215-593-5187

Lancaster Co. 1968

Mr. Dairy Farmer,
Lancaster & Chester Counties,
Penna.

Dear Friend:

If you are in the market for Can Milk Coolers stop at Christiana Milk Co. We have in stock front opening spray type cabinets, sizes 8-10-12 can capacities. They are brand new and fully warranted!

We also carry a full line of Dairy Farm Supplies, Stainless Steel Wares, Detergents, Brushes, etc., and top quality baler twine and binder twine... at lowest prices.

You will be interested to know a carload of cast iron Grape Design white tables, chairs, settees, round-the-tree Benches and Planters has just arrived.

We will be looking for you to stop at our new store located at Christiana Milk Co.

Sincerely yours,
James M. Mimms