

# Correspondence

## Courses



### STUDY WOODLOT FORESTRY BY MAIL

Take a good look at your woodlot this winter. Do mature trees dominate certain areas, preventing the growth of saplings beneath? Can more desirable tree species be planted in some areas? Are shrubs and grains needed for wildlife cover and feed?

According to a Pennsylvania State University correspondence course on woodlot forestry, good management requires that trees grow close together. Competition for space and light causes trees to crowd their tops as they grow making long, straight trunks free of side branches. Long boards, clear of knots, are cut from such logs.

But, there may be too many

### For The Farm Wife (Continued from Page 18)

er with 1 teaspoon salt and pepper, as desired. Spread with stuffing. Skewer meat into a roll with stuffing inside. Place on a rack, skin side up, in a baking pan. Bake at 325 degrees for about 2½ hours or until meat is tender.

#### APPLE STUFFING

- 1 cup butter, margarine, or bacon drippings
  - ½ cup chopped onion
  - ½ cup chopped celery
  - 4 cups diced, tart apples
  - ½ teaspoon salt
  - ½ cup sugar
  - 4 cups small bread cubes
- Melt fat in a large frypan, add onions, celery and apples

trees in an area. Overcrowding results in spindly-stemmed trees. Thin the stand by cutting out trees of low value.

To learn management of woodlots study Penn State's correspondence course. Send your name and address with \$2.25 to Woodlot Forestry, Box 5000, University Park, Pennsylvania 16802. A course copy will be sent by mail.

Sprinkle with salt and sugar. Cook, turning occasionally for 8 to 10 minutes or until apples are lightly browned. Add bread cubes and toss gently to blend ingredients.

#### COUNTRY STYLE PORK CASSEROLE

- 8 pork chops
- 2½ teaspoons seasoned salt
- 2 tablespoons salad oil
- 2 medium onions, coarsely chopped
- 1 medium pepper, coarsely chopped
- 1 cup sliced celery
- 1 medium clove garlic, minced
- 1 can (1 pound) tomatoes
- 1 can (1 pound) golden wax beans, drained
- 1 teaspoon oregano leaves
- 16 sesame bread wafers

Sprinkle pork chops with 1½ teaspoons seasoned salt. Heat salad oil and brown chops well on both sides; remove. Pour off all but 2 tablespoons fat. To pan drippings add next four ingredients and saute until onions are golden.

Add next three ingredients and remaining seasoned salt; bring to boil while stirring. Pour into 12 x 8 x 2-inch baking pan. Top with pork chops.

Bake, uncovered in a preheated hot oven (400 degrees) 40 to 50 minutes, or until chops are done. Serve with sesame bread wafers 8 servings

Rural electric and telephone cooperatives financed by the Rural Electrification Administration provide electric and telephone service to more than 20 million rural people in 46 states through some 5 million electric meters and 500,000 telephone connections

## Ladies, Have You Heard? . . .

By Doris Thomas, Extension Home Economist



### Bar Cookies Easy To Prepare

Bar cookies are the easiest kind of cookies to prepare. You can use any of several mixing methods, but once the batter is mixed you just spread it in a pan and bake. To be sure the cookies are done, bake fudge-type bar cookies until the top crust is dull. Bake cake like bars until a cake tester inserted in the center comes out clean. Cut bar cookies while still warm or after cooling, as the recipe indicates.

Brownies are the all-time favorite bar cookies. You can glamorize them with a crunchy bottom layer of brown sugar and nuts or top them with chocolate frosting.

Your cookbook will give you basic bar cookie recipes with variations. You might like to experiment and come up with a variation all your own.



THOMAS

### Some Guidelines For Buying A Mattress

When a mattress reaches the hill and valley stage, it's outlived its normal comfort service expectancy.

Some indications of a mattress being worn out include sagging borders, broken stitching, and a flabby, packed down look. One sure sign of a worn-out mattress is how you feel when you get up in the morning. A worn-out mattress doesn't give you the even, equal sup-

port you need for relaxing, restful sleep.

Good mattresses have sturdy tickings and borders with reinforced ticking edges.

You can't judge comfort by sitting on or punching a mattress. The only way to test a mattress is to lie down on it. Stretch out and see if it's long enough, wide enough, and firm enough for you.

Long twin or double bed mattresses allow extra length; king (Continued on Page 20)

**SAVE AT SAVE RITE MARKET**  
713 S. BROAD ST. LITITZ, PENNA.

**SUPER SHOES**  
Self Service  
2750 Columbia Ave. Lancaster  
Lanc. Co.'s Largest Shoe Store  
All 1st Quality Super Low Prices

# How's the world treating you?

Getting nowhere fast?  
Worrying whether you're making the most of your money?

Stop wondering.

You can fix all that.

Establish a closer relationship with your full service bank:

the Key Bank.

One that can handle all your money needs.

We lend it.

We help you handle it.

We pay you to save it.

The more ways you use a full service bank like ours, the better we get to know you.

That's the big advantage of full service banking!

Knowing you better, we can act faster when a financial need arises.

Your credit rating goes up.

You can accomplish more for yourself and your family.

Put your dollars where they will do the most good. In a full service bank like ours.

See if the world doesn't treat you just a little bit better.



LANCASTER COUNTY FARMERS NATIONAL  
Lancaster • Quarryville • Mount Joy • Christiana • Columbia

Member of Federal Deposit Insurance Corporation



## KRIZER HYBRID CORN



Put corn in your crib — not moisture  
For dry corn at picking time plant

### KRIZER HYBRIDS

ORDER FROM

## EUGENE G. HOOVER

Lititz R#3

CASSEL C. MUMMAU  
Mt. Joy Route 1

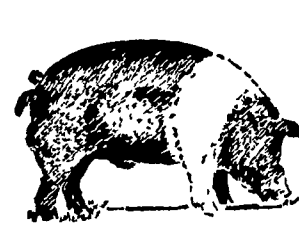
AARON S. GROFF  
Ephrata Route 3

LEVI N. OBERHOLTZER  
Richland Route 1

LESTER H. RANCK  
Quarryville Route 2

# IT PAYS TO "RITCHIE-LINE" YOUR FARM

THRIFTY RITCHIE  
AUTOMATIC LIVESTOCK WATERERS



73 Waterers in 27 Models For Every Farm  
Need INSURES water warmed in winter and pipe-line cool in summer. Use in Lot or in a Fenceline.

'Round the Clock They Make Money For You!  
Come In Today

**LESTER A. SINGER**  
RONKS, PA. 687-6712