



Don Snyder

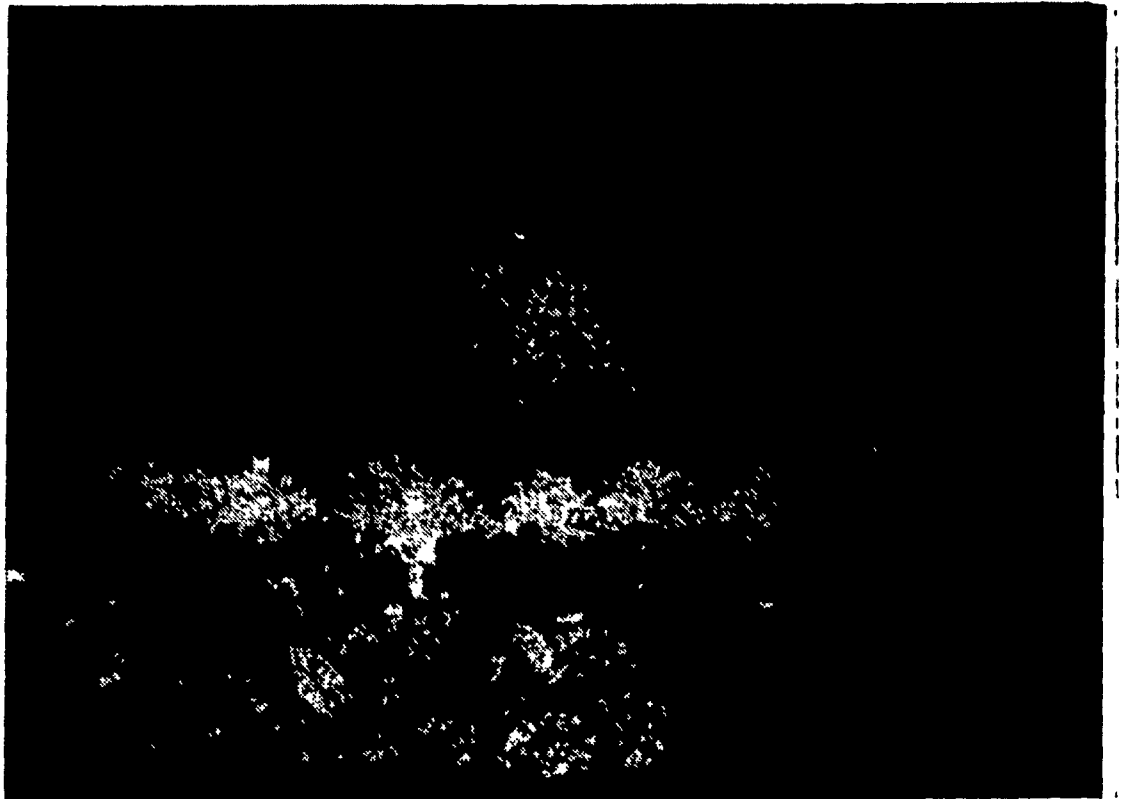
● Don Snyder  
(Continued from Page 1)

and Lamb Club for six years. After graduation, he hopes to go into partnership with his father and brother who operate a fruit farm just northeast of the Lancaster Airport. At Penn State, Don has participated in many activities. These include intramural sports. Ag Student Council Representative, Hort Show Construction Manager, Hort Club Secretary, chairman of Student-Faculty Dinner, chairman Hort Show Pomology Display, and President of the Hort Club. This year's 55th annual Penn

State Hort Show will be held in the University Ice Pavilion. Admission is free and last year over 10,000 people attended the two-day event. It takes one year of planning by the horticulture students and faculty to present each show. Profits from the show gained by selling cider, apples, and plant materials are used to finance the club's activities for the remainder of the year.

The theme of this year's show is "Pennsylvania—A Leader in Horticulture". Don said, "We hope to emphasize that our state is a leader in horticulture not because it produces a large quantity of one crop but rather because it produces appreciable quantities of a wide variety of horticulture crops. Each of the five main exhibits contains only important horticulture crops of Pa." Displays by the Pa Retail Florists, Pa. Flower Growers, and the State Hort Association will also be included.

This year the show will be held Homecoming Weekend, November 2 and 3. On Saturday, the show will be open from 10 a.m. to 9 p.m. and Sunday from 9 a.m. to 4 p.m. All plant material used in the show will be



PENN STATE HORTICULTURE SHOW. A display in the form of a globe at

last year's show used 3000 mums. This year's show will use 6000.

placed on sale to the general public at the close of the show. County products used in the show are as follows:

Gold Apiaries, 911 State Street, Lancaster.  
There will be television coverage of the show Oct. 25 on "Noonday on 8", WGAL-TV.

Task Forces Urges Cut In Dairy Imports

The House Republican Task Force on Agriculture has called for immediate action to curb dairy imports to prevent further income and market losses by U.S. farmers.

Citing a report just released by the Department of Agriculture, Chairman Odin Langen (R. Minn.) said it is evident that added restrictions are needed now. He said the report shows evaporated milk imports during the first six months of 1968 are up 527 percent over the same period of 1967, milk chocolate is up 140 percent, cheese and cheese substitutes up 53 percent. Langen said foreign suppliers are circumventing recent import limitations by changing the form in which dairy products enter the country.

The impact of imports on hard-pressed U.S. dairymen was pointed out by Langen, who noted that dairy producers have lost more than \$600 million since 1963 due to imports, the equivalent of 80,000 farms of 25 cows each, which could produce 17 billion pounds of milk.

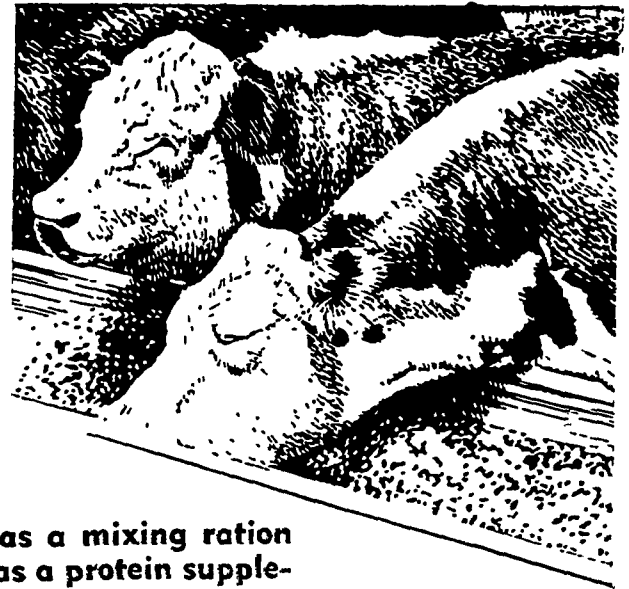
Said Langen "These statistics serve notice on all government officials who administer our dairy programs. What is clearly evident is that inaction at this critical time will only be a disservice to our struggling rural economy which has been continuously driven backwards during recent years."



SWEIGART  
FIRESTONE

329 W. High St., Manheim, Pa.  
Phone 665-2258

WHAT'S BEST  
FOR YOUR STEERS?  
RED ROSE HAS THE ANSWER!



IT'S RED ROSE  
32 BEEF CATTLE SUPPLEMENT

This is the supplement you will want to use as a mixing ration for your home-grown grains, or you can use it as a protein supplement to balance the feeding of low protein roughages.

and RED ROSE  
50 BEEF CATTLE SUPPLEMENT

This supplement is in mash form. Feed 50 Beef Cattle Supplement (the nutrient fortifications are double the levels of 32 Beef Cattle Supplement) at the rate of one pound per head per day.

RED ROSE STEER FEED is ideal, too. Add it to your corn or other grains to produce well-finished steers!

The secret of cattle raising is in your feed lot. That's where you will make your profit! So, let Red Rose Cattle Supplements help you make that profit. Make sure they are in your feed troughs.



Order your cattle feeds from these dealers — today!

Walter Binkley & Son  
Lititz

E. Musser Heisey & Son  
R. D. #2, Mt. Joy, Pa.

Musser Farms, Inc.  
Columbia

Brown & Rea, Inc.  
Atglen

Heistand Bros.  
Elizabethtown

Musser's Mill  
The Buck

Elverson Supply Co.  
Elverson

A. L. Herr & Bro.  
Quarryville

Chas. E. Sauder & Sons  
Terre Hill

Henry E. Garber  
R. D. 1, Elizabethtown, Pa.

David B. Hurst  
Bowmansville

Ammon E. Shelly  
Lititz

L. T. Geib Estate  
Manheim

Martin's Feed Mill, Inc.  
R. D. 3, Ephrata, Pa.

E. P. Spotts, Inc.  
Honey Brook

I. B. Graybill & Son  
Refton Strasburg

Mountville Feed Service  
Mountville

H. M. Stauffer & Sons, Inc.  
Witmer