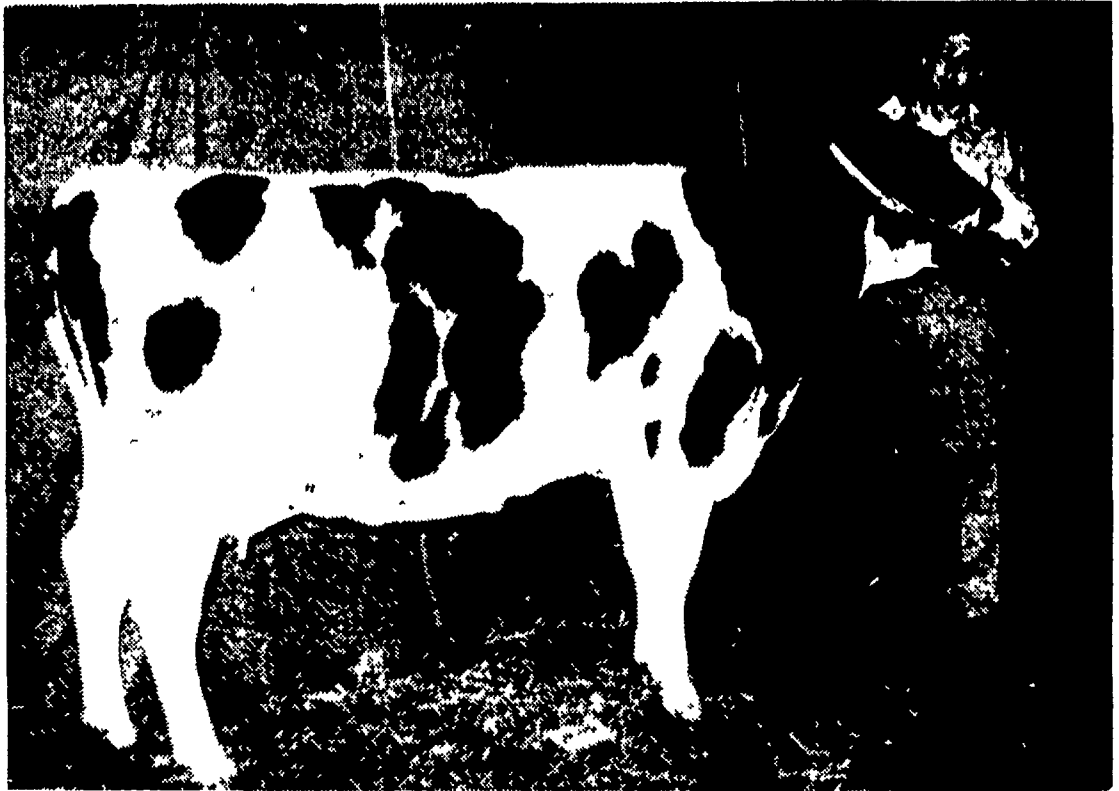




CHAMPION MARKET HOG at the Manheim Farm Show was exhibited by Franklin Ruoss, Ephrata R2. The Duroc barrow was the first in the lightweight division. L. F. Photo



PENN SPRINGS PIONEER PEGGY, shown by Robert H. Kauffman, Elizabeth-town R1, was named grand champion in the dairy show held Thursday night at the

Manheim Farm Show. The entry, a three-year-old, was also named best udder winner. L. F. Photo

Manheim Swine

(Continued from Page 1)

Champion sow in the 49 head show Reserve grand champion was the 1st place heavyweight market hog shown by Carl Siegrist, Manheim R1. Siegrist also showed the best trio.

SHEEP SHOW

In the sheep show, Lester Gerhart, Manheim R3, had the best over-all entry with his first place in the Ewe class.

Steven Miller, Manheim R4 showed the best Ram and Jesse Miller had the top Ewe Lamb

Clair Zerby, Warwick Vo-Ag Teacher, served as the judge and Mark Nestleroth was show chairman.

Placings are as follows **Senior Sow**, 1, Robert Donough, Manheim R1, 2, Ed Donough, Manheim R1, 3, Carl Siegrist

Junior Sow, 1, Franklin Ruoss; 2, William Ruoss, Ephrata R2, 3, Carl Siegrist

Lightweight Market Hogs, 1, Franklin Ruoss, 2, Robert Weaver, Strasburg R1, 3, Michael Sherer, Manheim R4

Heavyweight Market Hogs, 1, Carl Siegrist; 2, Richard Buckwalter,

Lutitz R3, 3, Timmy Diehm, Elm

Lightweight Trio, 1, Joe Le-fever, Manheim R4 **Heavyweight Trios**, 1, Carl Siegrist, 2, Robert Weaver; 3, Walter Cas-sel, Manheim R1

SHEEP Ram, 1, Steven Mill-er, Manheim R4 **Best Ewe**, 1, Lester Gerhart, Manheim R3, 2, Ivan Gerhart, 3, Jesse Miller, Manheim R4

Best Ewe Lamb: 1, Jesse Mill-er, 2, Barry Miller, Manheim R4 **4-H Feeder**, 1, Cathy Don-ough, Manheim R1

Manheim Dairy

(Continued from Page 1)

year-old, that has won many shows in recent years

Marlene Harbold, Mount Joy R1, took the junior champion title with her senior calf, and Clarence and Earl Stauffer, Ephrata R1 took both championships in the bull classes with the champion an intermediate calf and the reserve a yearling

Judging the 50 entries was Creedin Corman, a Holstein

breeder from Carlisle R6, Cum-berland County.

Raylene Harbold won the showmanship title, and Susan Kauffman won the fitting cham-pionship. Each was awarded a showman's kit by the Lancaster County Holstein Assn

Placings by class were:

Bull Classes

Junior bull calf, 1, Ray Har-bold, Mount Joy R1, intermedi-ate, 1, Clarence Stauffer, Eph-rata R1, junior yearling, 1, Clar-ence Stauffer

Female Classes

Junior calf, 1, Susan Kauff-man; 2, Yvonne Stauffer, 3, Luke Weaver, Ephrata; 4, Ar-thur Wenger, Manheim R2, 5, Donald Hershey, Manheim R2; 6, Ed Donough, Manheim R1.

Intermediate calf, 1, Robert Kauffman, 2, Donald Hershey; 3, Debbie Buchen, Manheim R3, 4, Linford Weaver, 5, Luke Weav-er; 6, Arthur Wenger; 7, Ray Harbold.

Senior calf, 1, Marlene Har-bold; 2, Raylene Harbold, 3, Ar-thur Wenger; 4, Nelson Wenger; 5, Ronald Martin, Mount Joy R2.

Junior yearling, 1, Linda Kauffman, 2, Arthur Wenger.

Senior yearling, 1, Earl Stauf-fer; 2, Ray Harbold, 3, Clarence Stauffer, 4, Linford Weaver, 5, Gary Buchen, 6, Donald Her-shey, 7, Burnell Buchen

Get of sire, 1, Clarence Stauf-fer, Raylene Harbold 2, Linford Weaver, Nelson and Arthur Wenger

Two year old, 1, Susan Kauff-man, 2, Clarence Stauffer; 3, Robert Kauffman, 4, Clarence Stauffer, 5, Earl Stauffer, 6, Marilyn Harbold 7, Arthur Wenger

Three year old, 1, Robert Kauffman, 2, Clarence Stauffer, 3, Donald Hershey, 4, Paul Don-ough, 5, Edward Donough

Four years and over, 1, J Rob-ert Hess and Robert Kauffman, 2, Clarence Stauffer, 3, Clyde Buchen, 4, Donald Hershey

Produce of dam, 1, Kauffman; 2, Stauffer, 3, Linford Weaver, 4, Ray and Marilyn Harbold

Senior get of sire, 1, Stauffer. **Dairy herd**, 1, Kauffman, 2, Stauffer

Breeders young herd, 1, Stauf-fer; 2, Ray Harbold

Best udder, 1, Robert Kauff-man, 2, Susan Kauffman, 3, Clarence Stauffer, 4, Robert Kauffman; 5, Earl Stauffer, 6, Daryl Bollinger, Manheim R1, 7, Arthur Wenger

Best three females, 1, Clar-ence Stauffer, 2, Robert Kauff-man, 3, Donald Hershey, 4, Ar-thur Wenger.



AGWAY TIRE BONANZA

COUNTRY TESTED - TURNPIKE PROVED GET THE EDGE ON SAFETY... AND ON PRICE

Agway's "get-there-and-back" tire, challenges winter weather to do its worst and keeps you going when it does

When it snows, you go with the 890's extra-deep lugs — a full 16/36" deep — and other exclusive engineering features give the extra traction you need for safe driving wherever you go

\$17.95 650 x 13 \$1.81 Fed. Ex. Tax*
\$21.95 775 x 14 \$2.19 Fed. Ex. Tax*

Check these special features

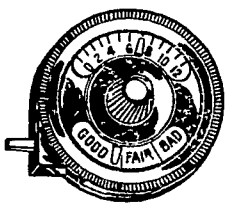
Compacting ribs — keep the tire on top of snow, mud

Nylon cord — 4 plies strong for the most demanding driving

Super-Grip tread — self-cleaning for full-time traction

\$23.95 825 x 14 \$2.35 Fed. Ex. Tax*
\$24.95 855 x 14 \$2.56 Fed. Ex. Tax*

*Tubeless black wall White walls available Studded tires available — \$6.00 per tire extra



Get this tire tread depth gauge **FREE**



Precision tire pressure gauge

ONLY 99¢

Limit one per customer, additional gauges \$2.49

Check these gauge features:

- American made
- Heavy-duty Dupont Delrin
- Complete with case
- Easy to read
- Full year warranty

Free mounting and balancing

Credit terms available.

AGWAY

LANCASTER
394-0541

Manheim Pike & Dillerville Road

NEW HOLLAND
354-2146

QUARRYVILLE
786-2126