

Weekly Poultry Report

Eastern Pennsylvania And New Jersey

Prices continue to trend upward as much as 1/2c in instances on light type. Demand good for generally limited offerings. Producers continue to hold further production in many quarters where replacement pullets unavailable for immediate housing. Demand good for heavy type, however offerings limited and short of full needs. Prices paid at farm: Light Hens 7-9 1/2c. Heavy Hens TFEWR.

TURKEYS — Offerings ample for limited interest other than contractual movement.

Fogelsville

October 8, 1968

Prices paid dock weights, cents per lb., except where noted)

HENS, light type 7 1/2-10 mostly 8-8 1/2; **HENS**, heavy type 9 1/2-19 mostly 10-15; **PULLETS** 22-40 mostly 28-34; **ROASTERS** 18-41 mostly 25-34; **DUCKS** 27-33; **DPAKFS** 42-43; **GEESE** 32-33 1/2; **TURKEYS** Toms 15-23; **TURKEYS**, Hens 26 1/2-33; **RABBITS** 9-33 mostly 25-29; **GUINEAS** 65-67 1/2; **PIGEONS** (per pair) 67-1.97 mostly 90-1.10; **JUMBO SQUAB** 95.

Total Coops Sold. 721.

Chicago

(Continued from Page 3)

27 25-28 25. Mixed Good and Choice 26 75-27 75

SLAUGHTER HEIFERS — On Wednesday, High Choice and Prime 925-1025 lbs Yield Grade 3 and 4 26 75-27 00. Choice 800-1000 lbs Yield Grade 2 to 4 25 75-26 75. Mixed Good and Choice 24 75-25 75.

The best excuse is the one you never make

Auction

(Continued from Page 2)

Good 22 85-24.50; Utility and Commercial 22 50-24.85; Cutter and low-Utility 20 50-22.50.

CALVES 111—Vealers steady to \$1 lower Slaughter Calves \$1-2 lower

VEALERS — Choice 44-45 50; Good 41.50-44 50; Standard 37-41; Utility 33-38.50; Cull 95-120 lbs. 28-34. 70-90 lbs. 23-28

SLAUGHTER CALVES — Choice 270-400 lbs. 31-35; Standard and Good 250-400 lbs. 25-31.

HOGS 389 — Barrows and gilts 75-\$1 lower.

BARROWS & GILTS — US 1-2 190-220 lbs. 21-21 50; US 2-3 230-240 lbs. 20.25-20.50; US 2-4 185-260 lbs. 19.35-20.

SHEEP 35 — Woolled lambs steady

WOOLED LAMBS — Choice 90-100 lbs. 26; Good 65-85 lbs 22-25

SLAUGHTER EWES — Cull and Utility \$4 6

Vintage

(Continued from Page 2)

CALVES 588 — Vealers \$1 00 higher instances \$2 00 higher on Cull and Utility

VEALERS — Choice 45 00-47 50. Good 42 00-45 00. Standard 38 00-41 00. Utility 33 50-38 00. Cull 95 120 lbs 29 50-36 00. 70-90 lbs 28 00-30 50

HOGS 347 — Barrows and gilts 25-75c lower

BARROWS AND GILTS — US 1-2 225-245 lbs 21 25-21 60 US 2-3 200-240 lbs 20 60-21 10 US 2-4 185-250 lbs 20 00-20 50

SHEEP 82 — Woolled lambs fully steady Ewes 1 00-2 00 higher

WOOLED LAMBS — Choice 60-90 lbs 27 50-30 50. Good 24 00-27 00 Utility 18 50-23 50

SLAUGHTER EWES — Utility and Good 5 00-10 50

Lancaster Farming, Saturday, October 12, 1968—5

Weekly New York Egg Mkt.

From Monday, October 7th to Friday, October 11th

	Mon.	Tues	Wed.	Thurs.	Fri.
WHITE					
Fcy Ex. Lge	43-44	43-44	43-44	43-44	43-44
Fcy. Lge.	43	43	43	43	43
Mediums	39 50	39	36-37	36 50	36
Pullets	31	31	31	31	30
Peeweess	23	23	23	23	23
Standards	40-41	40-41	40-41	40-41	40-41
Checks	27-28	27-28	27-28	28	28
BROWN					
Fcy. Lge.	42	43	44	45	45
Mediums	40	39	39	37	37
Pullets	31	31	31	31	30
Peeweess	23	23	23	23	23

TREND: Market showing an irregular trading pattern with ample supply of all grades Large in the best relative position.

Copyright 1968 by Urner Barry Publications

Convenience Market Challenges Poultry Industry, Esham Warns

The prospect of a major shift in the composition of its prime market will shortly confront the poultry industry with a challenge it is not currently prepared to meet, a major poultry processing corporation executive warned this week.

Otis G. Esham, president of Maryland Chicken Processors, Inc., told members of the Northeast Poultry Producers Council that an exploding drive-in and take-out market already requires more uniform-sized, pre-cooked convenience chicken products than are now available.

"The drive-in and take-out market will continue to increase by leaps and bounds," Esham said, noting that the quick service, informal atmosphere and economical cost have made such businesses popular with today's younger and more affluent American family.

Speaking before a seminar which was one of the highlights of NEPPCO's 31st Exposition and Convention in the Farm Show Building, Harrisburg, Esham added that the modern housewife is also looking for easily prepared convenience items and will become an increasingly important part of the new market.

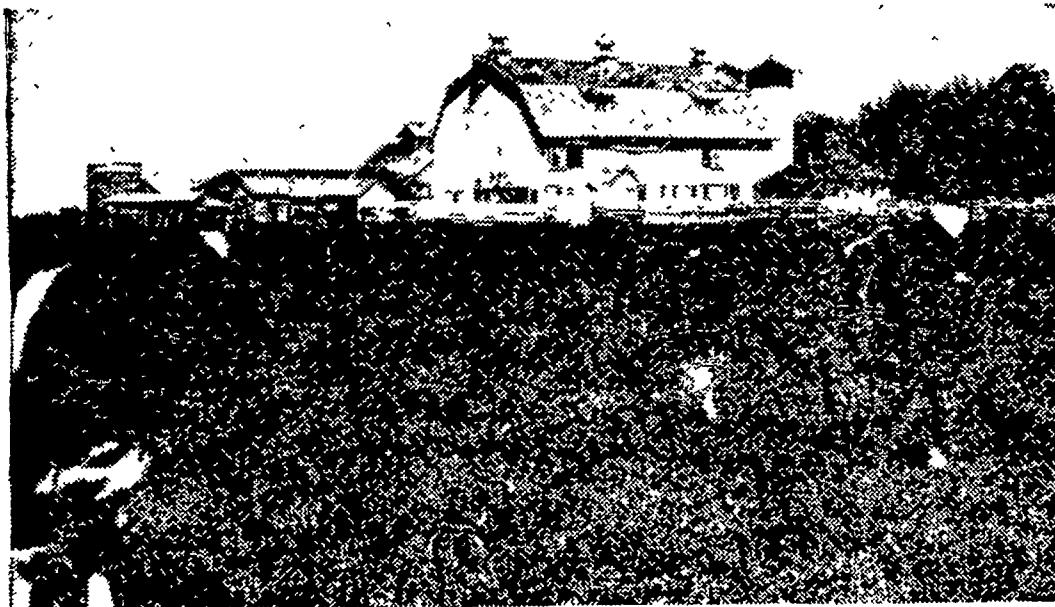
CALL 944-7481 For

SAWDUST

Loaded on your truck or delivered.

Zeager Bros. Lumber Co., Inc.

4000 E. Harrisburg Pike, Middletown, Pa



FEED FLORIN 14% OR 16% DAIRY RATION TO YOUR HERD TO MAKE MILK & MONEY

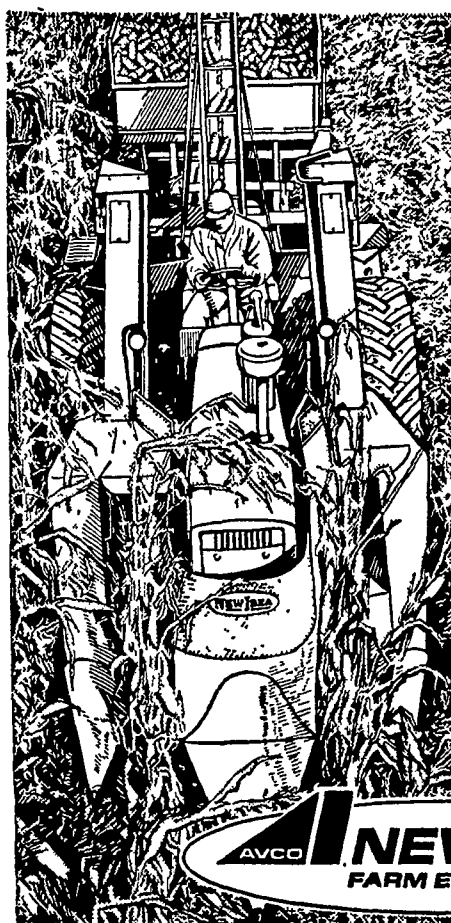
For a healthy, highly productive herd, Florin enriched dairy feed is scientifically formulated, tested and proved. Feed it regularly, and see the results . . . more milk from cows, more money for you.



Wolgemuth Bros., Inc.

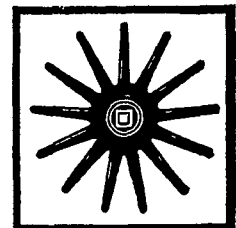
Mount Joy, Penna. — Ph. 653-1451

and "Stop and Go" corn harvesting!
**Mounted
SUPERPICKER**
has the world's
biggest appetite
for corn!



Superpicker is tops in big capacity, non-stop picking. You keep moving acre after acre, without plugging. Universal subframe makes mounting easy, fast, simple. Less than 15 minutes to lubricate. Full year written warranty.

Exclusive Flexi-finger presser wheels align ears and keep them moving for unbelievably clean husking.



another good idea for profit-minded farmers

Chas. J. McComsey
& Sons
Hickory Hill, Pa

Longenecker
Farm Supply
Rheims

Roy H. Buch, Inc.
Ephrata, R D 2

A. B. C. Groff, Inc.
New Holland

Allen H. Matz
Denver

Wilbur H. Graybill
Lititz R D 2

Landis Bros.
Lancaster

A. L. Herr & Bro.
Quarryville