

Red Meat Production

Commercial red meat production in Pennsylvania totaled 87,705,000 pounds in August, virtually unchanged from the previous month but down 4 percent from a year ago.

According to a survey by the State Crop Reporting Service, production totals during August were: pork, 42,636,000 pounds; beef, 41,059,000 lbs.; veal, 3,467,000 lbs., and lamb and mutton, 543,000 lbs.

Red meat production for the

ADA Approves

(Continued from Page 20)

the national ADA organization and its affiliated member units. The new agreement, which becomes effective January 1, 1969, sets up formulas for allocation of program costs.

In other actions, the directors

period January-August of this year was 721,954,000 pounds, 4 percent more than the 1967 output for the same period.

formally reaffirmed ADA's endorsement of a proposed consolidation of American Dairy Association and National Dairy Council as two national organizations having the same goals, provided that the separate identities of the two organizations be maintained. The board authorized the Executive Committee to work out the details of such a consolidation and to report progress at ADA's annual meeting next March.

It also voted to recommend

changes in by-laws which would give member units representation on the board in proportion to their financial support of ADA. These changes will also be presented to delegates attending the 1969 annual meeting.

M. J. Framberger, ADA general manager, reported to the directors that basic decisions reached at their fall meeting a year ago in Anaheim, California, are producing results. One established 1% of gross dairy producer income as ADA's fundraising goal. Applied to total U S production, this would yield \$55 million a year for ADA promotional programs. Another decision committed ADA to work toward a \$15 million level for research and development financed by all segments of the dairy industry.

Framberger announced the formation of regional ADA service units to improve communications with media and producer

Vo-Ag Teacher Hired By L-S

At a meeting Monday night, October 7, the Lampeter-Strasburg School Board hired a vocational agriculture teacher, effective December

Hired was Walter S. McDanel Jr. of Berwick, who is now doing graduate work

He has taught for two and a half years and has worked for four and a half years as a field representative for the Pennsylvania Farmer's Association.

groups. He pledged that ADA would make a major effort to achieve greater support for the promotion of manufactured milk products

"We have the ability to make changes in the consumption habits of the nation if we follow the basic precepts of marketing and promotion," he said.

INVENTORY REDUCTION SALE

OPEN TODAY, SATURDAY

Closed Mon. - Tues. - Wed. — Oct. 14 - 15 - 16

SALE DAYS

Thurs. - Fri. - Sat. — October 17 - 18 - 19

GROFF'S HARDWARE

100 S. Railroad Ave.

New Holland, Pa.



KRIZER HYBRID CORN



Put corn in your crib — not moisture
For dry corn at picking time plant

KRIZER HYBRIDS

ORDER FROM

EUGENE G. HOOVER

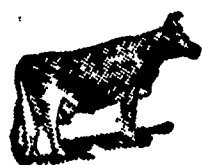
Lititz R#3

CASSEL C. MUMMAU
Mt. Joy Route 1

AARON S. GROFF
Ephrata Route 3

LEVI N. OBERHOLTZER
Richland Route 1

LESTER H. RANCK
Quarryville Route 2



CHRISTIANA MILK PRODUCTS CO.

215-593-5187

Christiana, Penna.

Lancaster Co. 1968

Mr. Dairy Farmer,
Lancaster & Chester Counties,
Penna.

Dear Friend:

If you are in the market for Can Milk Coolers stop at Christiana Milk Co. We have in stock front opening spray type cabinets, sizes 8-10-12 can capacities. They are brand new and fully warranted!

We also carry a full line of Dairy Farm Supplies, Stainless Steel Wares, Detergents, Brushes, etc., and top quality baler twine and binder twine . . . at lowest prices.

You will be interested to know a carload of cast iron Grape Design white tables, chairs, settees, round-the-tree Benches and Planters has just arrived.

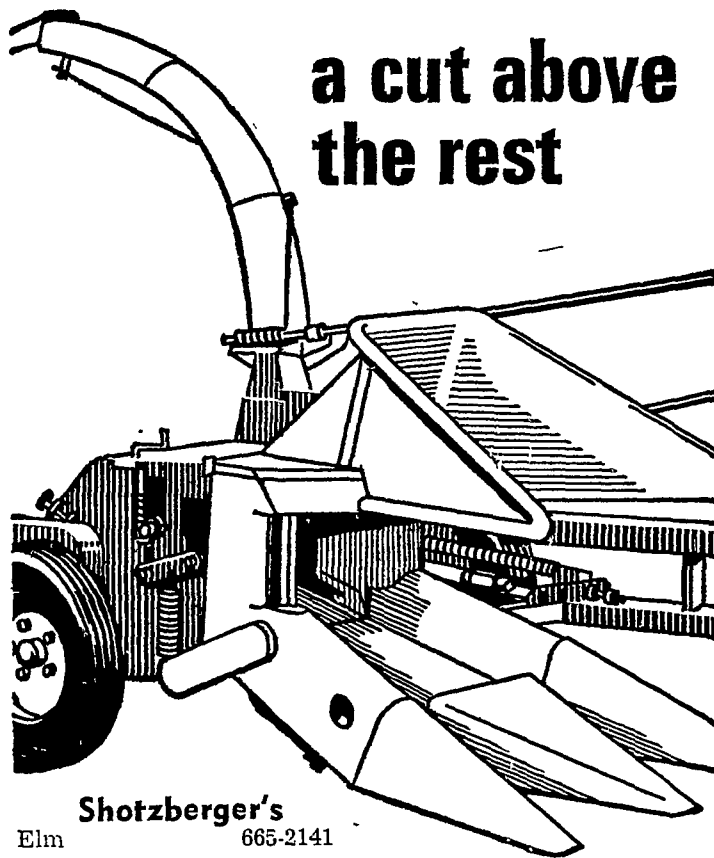
We will be looking for you to stop at our new store located at Christiana Milk Co

Sincerely yours
James M. Minnas

John Deere 38 Forage Harvester is unmatched . . . any way you size it up

Add up the facts that corn attachments have exclusive rubber gathering belts for plug-free feeding; that changing crop attachments is the fastest and easiest around; that the cylinder cutterhead boasts 6 spiraled knives; that there's a built-in knife sharpener; that re-cutter screens are available, and you'll see why it's unmatched. See us soon. Credit's available.

a cut above the rest



Shotzberger's
Elm 665-2141

Wenger Implement Co.
Buck 284-4467

M. S. Yearsley & Sons
West Chester 609-2990



A. B. C. Groff, Inc.
New Holland 354-4191

Landis Bros. Inc.
Lancaster 393-3906