

● NEPPCO

(Continued from Page 13)

massive research for answers to pricing problems.

1:30 p.m.—Broiler Session, Delaware Room, Farm Show Building. Chairman: Roland G. Hastings. NEPPCO director, Delaware.

—“The Great Market Switch”—Otis Esham, Maryland Chicken Processors, Inc., Maryland.

—This well-known Delaware

broiler integrator, who recently entered the chicken restaurant field, discusses problems and opportunities in this expanding new market.

2:20 p.m.—“Broiler Houses — Windowless or Conventional — Some Revealing Comparisons.” Moderator: Ray Lloyd, Delaware extension poultry specialist. Panelists: Robert McClain, Perdue Foods, Inc., Maryland.

1:30 p.m.—Turkey Session, New

England Room, S.E. corner of Exhibit Hall. Chairman: Hubert Ashley, chairman, NEPCO turkey division, New Jersey.

—“How Will the Wholesome Poultry Products Act Affect Northeastern Turkey Growers?”—Dr. Maurice C. McNay, associate director, Northeastern Regional Food Inspection Office, USDA, Philadelphia, Pennsylvania.

—“The Future of Turkey Pro-

duction in the Northeast.” A panel discussion covering market potential, labor costs, land usage, attitudes, the “right” bird, processing and marketing. Moderator: John Bezpa, New Jersey extension poultry specialist. Panelists are the following Pennsylvanians: Fred Jandl, Jandl's, Inc.; Kenneth Longacre; James Hoover, Quaker Oats Co.; Harry Wentz, Wentz Bros.

will discuss cash and accrual accounting in the poultry industry and explain what might be done to avoid another year like 1967.

11:15 a.m.—“Trends That Are Changing Your Future” — Lane Palmer, editor, Farm Journal.

12:00 noon — Convention program adjourns.

As observed in the AMA NEWS, published by the American Medical Assn, the taxpayer's most common mistake in itemizing 1967 deductions was failure to include one-half of first \$150 spent for medical and hospital insurance, says the Internal Revenue Service. The federal government was flooded with amended returns. Another common mistake was failure to include transportation expenses for medical care.

Thursday, October 10

10:30 a.m. — General session — Mid-Atlantic Room, West Lobby. Chairman: Burnell Warner, vice president, NEPPCO, Ohio.

—“The Handwriting on the Wall”—Dr. William R. Henry, professor of agricultural economics, North Carolina State University, Raleigh, North Carolina. — Dr. Henry

# PUBLIC NOTICE

*Our store will be closed  
Mon., Tues., Wed., - Oct. 7-8-9  
to prepare for Big Sale*

SALE STARTS OCTOBER 10 AT 9 A.M.

## GROFF'S HARDWARE

100 S. Railroad Ave. New Holland, Pa.

### Dear Long and Bomberger:

Moss is growing on my roof! Will that cause rot and leakage? Do I need a new roof?

Signed:

Worried

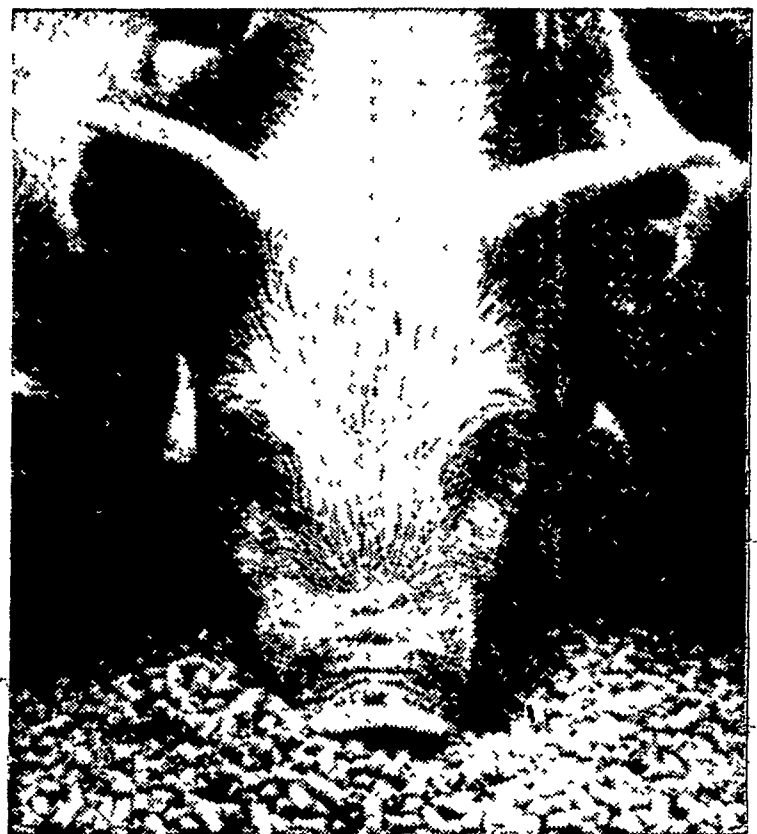
### Dear Worried:

Relax. Sounds like you have a cedar shingle roof as other kinds seldom last long enough for moss to grow. Cedar shingles won't rot, even with moss on them. Sawn cedar lasts up to 75 years with only minor repairs; hand split cedar lasts even longer. In fact, cedar shingles outlast asphalt roofing by about 3 to 1. Incidentally, we sell many kinds of quality roofing, including cedar and asphalt. If and when you ever do need a new roof, let us know.

Yours truly,



45 North Broad St.  
in Lititz  
Phone: 626-2123



## the proved way to give pigs the right start— PURINA® PIG STARTENA®

Purina Pig Startena is a proved complete starter. It's the result of constantly improved Purina complete starters. In research tests the latest improvement boosted growth by 12.4 percent from 5.2 percent less feed, over the former ration—and that ration did a great job.

Purina Pig Startena is fed from the time pigs have been started on Purina Baby Pig Chow at one week until pigs weigh about 50 pounds.

If scours is a problem feed extra highly-fortified Purina Pig Startena (Special) for a week to ten days.

Tylan\* is available in Pig Startena T-1 when you have swine dysentery problems.

Ask for this famous pig starter at our store.

\*Reg. Trademark of Eli Lilly & Co., a Div. of Eli Lilly & Co.

Ira B. Landis

Ph 394-7912

1912 Creek Hill Rd., Lanc.

John J. Hess, II, Inc.

Ph 442-4632

Paradise

James High & Sons

Ph 354-0301

Gordonville

John B. Kurtz

Ph 354 9251

R D 3, Ephrata

West Willow  
Farmers Assn., Inc.

Ph: 464-3431

West Willow

Wenger's Feed Mill  
Inc.

Ph: 367-1195

Rheems

LOW COST PRODUCTION...  
the reason why more farmers feed PURINA®

