

U. S. production of evaporated at 152 million pounds was down milk in July was 138 million 5 percent. Meanwhile, condensed pounds, down 10 percent from milk was up 14 percent at 8.6 previous years; nonfat dry milk million pounds.

FHA Notified Of New Farm Opportunities

Raymond J. Kerstetter, Pennsylvania State Director for the Farmers Home Administration, said recently he had been notified by Secretary of Agriculture Orville L. Freeman of new opportunities for farmers to develop nonfarm enterprises provided by legislation recently enacted by Congress.

The bill (S.1504) signed by the President August 19, 1968, authorizes Farmers Home Administration loans to family farmers:

* to develop farm-based small business or service enterprises that will add to their income, and

* to convert entire farms into outdoor recreational centers.

The measure also strengthens federal support of rural community development. The act re-

moves for three years (to October 1, 1971) any statutory ceiling on insured loans for rural water and waste disposal systems, community recreation projects, family farm ownership, soil conservation practices and for conversion of farms to recreational uses. The act raises the authorized ceiling on development grants for water and waste disposal systems from \$50 million to \$100 million a year, and raises the ceiling on grants for comprehensive plans for water and waste disposal services from \$5 million to \$15 million a year.

The Farmers Home Administration will be authorized to finance establishments such as farm equipment, electrical appliance and auto repair shops, and other farm-based services needed in rural areas.

Loans will be limited under the law to \$60,000, less any existing indebtedness on the security, for improvement and develop-

ment of real estate, payable over periods up to 40 years at 5 percent interest, and \$35,000 for equipment and other operating expenses, payable over periods of to 7 years at 5½ percent.

Prior to enactment of the new law, the Farmers Home Administration was authorized to help low-income rural families establish small nonagricultural enterprises only through loans not exceeding \$3,500 under authority delegated by the Office of Economic Opportunity.

"Through the new program of nonfarm enterprise credit for farmers," Mr. Freeman said, "many kinds of shops and services that farmers have the ability to operate can be added to the income-producing diversification of family farms."

The new act's provisions on recreation authorize loans to convert farm tracts wholly or partially into recreation areas such as fishing, boating, and camping resorts, winter sports areas and golf courses which may be operated by farmers as their means of livelihood or to supplement their farm income. The limits of \$60,000 for real estate development and \$35,000 for operating expenses also apply to loans for recreation enterprises.

"Excellent opportunities exist for building new commercial out-door recreation activities on land once used for farming. Rural people should have the fullest opportunity to share in this aspect of rural development," the Secretary said.

● 4-H Livestock

(Continued from Page 17)

Buckwaller, with 508 points, with third high individual and three points behind Smucker. Larry Herr, 840 Penn Grant Road, was the third team member and a single point behind Buckwaller. The team alternate was Larry High, of Leola.

This was the first interstate competition for Lancaster's champion team, which was accompanied by Victor Longenecker, of Elizabethtown.

The team's next competition will be at the Pennsylvania Livestock Exposition, at Harrisburg in November

It still seems that the Government is still living beyond our income

MARYLAND BEEF CATTLE PRODUCERS, INC. 16th Annual FALL FEEDER CATTLE SALE

(Feeder Calves & Yearlings)

1:00 p.m., Tuesday, October 8, 1968

Four States Livestock Sales, Inc.
Hagerstown, Maryland

1200 STEERS & HEIFERS

ANGUS HEREFORD SHORTHORN

All steer calves grading "Fancy" will be sold individually. All animals meet health requirements for interstate shipment.

For additional information contact: Amos R. Meyer, Department of Markets, University of Maryland, College Park, Maryland 20742.

Auctioneer: Col. Charles Bachman

FEEDER PIG SALE

SATURDAY, OCTOBER 5, 1968

1:30 P.M.

2½ miles south of Bethel from U.S. 22 and 6 miles north of Myerstown, Pennsylvania along U.S. 501.

300 - 350

40 - 60 Pounds Choice Feeder Pigs

Hamp-York-Duroc cross. All pigs are vaccinated for cholera and erysipelas. Castrated, wormed, sprayed for lice and mange. All pigs were raised on this farm. No outside pigs will sell on this sale. These are some of the finest quality pigs in the East.

Also 3 sows with litters.

NORMAN M. MARTIN

Route #1

Myerstown, Pennsylvania 17067

SPECIAL CATTLE SALES 1968

Abingdon Livestock Market, Inc.

Abingdon, Va. Phone 628-3551 — Area 703

Sale Every Thursday — All Classes Livestock

500-1000 lb. Native Steers — Native Steer-Heifer Calves

Angus Feeder CALF Sale—997 Tue. OCT. 1—7 p.m.

4th Hfrd. STEER Sale—2900 Tue. OCT. 8—1 p.m.

State Feeder CALF Sale—1500 Tue. OCT. 15—7 p.m.
(Hereford and Angus)

Tri-State CALF Sale. (Hfd.)—2756 Tue. OCT. 22—1 p.m.

5th Hfrd. STEER Sale—2843 Tue. OCT. 29—1 p.m.

Bred Angus COWS & HFRS. Mon. NOV. 4—7 p.m.

Sponsored by Virginia Angus Association

Bred Hfrd. COWS & HFRS. Wed. NOV. 6—7 p.m.

Sponsored by Virginia Hereford Association

2nd Tri-State CALF Sale—1087 Tue. NOV. 12—7 p.m.

Tazewell Livestock Market, Inc.

Tazewell, Va. Phone 982-9921 — Area 703

Sale Every Monday — All Classes of Livestock

Feeder STEER Sale—1200* Wed. OCT. 9—7 p.m.

State Feeder CALF Sale—1050* Wed. OCT. 16—1 p.m.

Clinch Valley CALF Sale—950 Wed. OCT. 23—7 p.m.

PLEASE NOTE: On all sales (at both markets) scheduled for 1 p.m. — cattle will be weighed-in the DAY BEFORE SALE. On all sales (at both markets) scheduled for 7 p.m. — cattle will be weighed-in and SOLD SAME DAY.

All cattle in the sales at both markets will be officially graded by Virginia Division of Markets. Check with your County Agent, the Sales Committee or the Markets for further information

* Indicates No Head 1967 Sales.

For Additional Information Write or Call

Abingdon Livestock Market, Inc.

A FEDERALLY SUPERVISED MARKET
Abingdon, Va. 24210 Phone 628-3551 — Area 703

1968 Special CALF & FEEDER CATTLE SALES



South Branch Stockyards, Inc., Moorefield, W. Va.

Friday, October 4, 7:30 P.M. D.S.T.

Demonstrational Sale. All calves in demonstrational sale will be graded and stamped. AFTER COMPLETION OF DEMONSTRATIONAL SALE, WE WILL SELL SEVERAL HUNDRED HEAD OF YEARLINGS, TWO YEAR OLDS AND HORN CATTLE.

Friday, October 18, 7:30 P.M. D.S.T.

Demonstrational Sale. All calves graded and stamped. No calves under 300 lbs. or over 600 lbs. No bulls or horny cattle accepted.

Friday, November 1, 7:30 P.M. E.S.T.

This is a clean up Sale. All kinds of cattle WILL BE OFFERED.

Sale sponsored by W. Va. Department of Agriculture and the South Branch Stockyards, Inc., Moorefield, W. Va.

NORTHEAST PENNSYLVANIA

BREEDERS SALE

Troy, Pennsylvania

THURSDAY, OCT. 3, 1968

12:30 P.M.

The sale will be at the Troy Fairgrounds at the intersection of Route 6 and 14, 20 miles south of Elmira, New York.

Fred Strause's selection of registered Holstein cows and heifers is exceptional. The depth of pedigrees, type and production is outstanding. Featured in the sale will be an 88 Rosafe Magician, VG Hector daughter with over 700 as a 3 year old, several GP86 daughters of sires such as Bannella Stylemaster; Moosehart Pioneer, Skokie Duke also a Kingpin heifer from a 20,000 dam, VG Roland with over 600 fat, a Fond Hope from a VG Citation R and bred to Sieling Rockman, an Ivanhoe with 600 as a three year old, a Marquis from a VG87 Roland daughter, a Reflector from a 19,000 dam, an Ilex from a 21,686-826 dam, a Fond Hope from a dam with 18162-605, other sires represented — Dee Ann Rag Apple Maple, Woodburne Inka Reflector, Kenvelyn Silver Rocket Rockdale Pres, Maview Dunloggin Direct. All animals tested for interstate Trucking arranged.

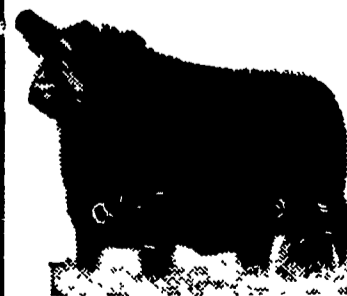
Terms Cash or good check day of sale
Credit available by contacting John Wagner, Wyoming County Bank and Trust Company, Warsaw, New York, prior to sale, Phone 716-796-3131.

ORTON MATTOCKS, SALE CHAIRMAN
TROY, PA.

HARRIS WILCOX, INC.
SALE MGRS. & AUCTIONEERS
BERGEN, N.Y. PH: 716-494-1880

CATTLE SALES EVERY TUESDAY

LARGE SELECTIONS OF CATTLE DIRECT FROM PRODUCERS EACH WEEK.



STAUNTON LIVESTOCK MARKET, INC.
(703) 886-5381 — 886-3634
C & O Flats
Staunton, Va.