

## New Holland Fair Report

The 37th annual New Holland Farmer's Fair will be held October 2, 3, 4 and 5. One of the highlights for this year will be the "Spectacle of Bands" Parade on Wed., October 2 at 7:00 p.m. conducted by the Young Men's Business League. Information or registering for the Parade can be made by writing Parade Committee, 434 Brimmer Ave., or phoning 354-8001.

Thursday evening, October 3, will feature the Western Kings and a Democratic Rally at the Bandstand on Franklin Street.

Friday afternoon is Kid's Day in charge of Robert J. Witmer The Pet Parade, sponsored by Hershey's Shoe Store will begin at 7:30 p.m. on Friday evening, followed by the Republican Rally

and the Tug-of-War at 9:00 p.m.

The Tug-of-War Contest is gaining momentum each year. The contest among the fire companies of the surrounding communities will be held at 9:00 p.m. Thursday, Friday and Saturday evenings at the Bandstand on Franklin Ave. The winner will be chosen on Saturday night and receive \$50.00 and trophy, and the runner-up \$25.00.

Floats and costumes are being prepared for the beautiful Baby Parade on Saturday, October 5, at 4:00 P.M. Registrations for the Baby Parade should be mailed to Mrs. Caroline Bair, 141 E. Broad Street, New Holland, on or before 1:00 p.m. October 5.

The parade forms at 3:00 p.m. on East Main Street. Entrants must be under 8 years of age. The Parade is sponsored by the Farmers National Bank & Trust Company of New Holland and conducted by the Business & Professional Women's Club of New Holland.

Saturday evening, October 5, the Rajah String Band of Reading will give a concert at the bandstand at 8:00 p.m. No New Holland Fair would be complete without the Farmers Fair German Band on the midway.

Exhibitors numbers have been mailed. If you have not received one, or wish to enter an exhibit for the first time, you may obtain a number by writing to Entry Clerk, 361 Valley View Drive, New Holland. By obtaining a number in advance, you may avoid standing in line on Tuesday, October 1, when entering exhibits.

Art exhibits may be brought Tuesday, October 1, from 6 to 8 p.m. to the Home Appliance Building on Franklin Street, as announced by Mrs. Caroline Bair, Chairlady. Items to be removed Saturday night from 9-11 p.m. Only exhibits listed in premium list eligible for prizes.

Mr. Larry Weaver, chairman of the Tobacco, Corn & Hay Show is hoping for a good show this year. FFA and 4-H members and others are urged to vie for the Grand Champion \$50.00 prize donated by New Holland Division Sperry Rand. Mr. John Baylor, Penn State University, is the judge of this event. Please check premium list for rules and classes. These items may be brought to the Home Appliance Building (next to Art Show) on Franklin Street from 2 to 8 p.m. on Tuesday.

The Farm Show directors voted to donate the Baked Goods and Candies to the New Holland Library Committee, which will conduct the sale on Wednesday, October 2 at 12:30 p.m. in the auditorium of the New Holland Elementary School under the direction of Mrs. Robert Spotts Mrs. Phyllis Trimby is chairlady of the Bake Sale.

Mrs. Eleanor Hooper, chairlady of the Fancy Work Department, had added a few more categories. Check the premium list carefully. These items may be brought to the Elementary School auditorium on Tuesday, October 1, 2 — 8 p.m. and picked up Saturday night from 9 to 11.

Fruit, nuts, eggs, honey and

vegetables will also be received on Tuesday at the New Holland School auditorium under the direction of Mr. and Mrs. William Ruoss. Mr. and Mrs. Ruoss have been serving in this capacity for many years.

Jelly and Preserves and canned goods may also be brought to the School from 2 to 8 p.m. on October 1st. Mrs. Amos Mentzer and Mrs. A. C. Plank are chairladies of jelly and Mrs. Martha Bowers is in charge of the Canned Goods.

A new location has been announced for the famous New Holland Flower Show. This year the beautiful arrangements will be on display at the Boy Scout Home on S. Roberts Avenue. Mrs. Mary DeHart and her committee will receive floral exhibits on Tuesday evening and Wednesday morning until 11:00 a.m. They will be judged Wednesday afternoon.

Potatoes and Grain may be taken to the A. B. C. Groff Building on Tuesday, October 1, under the chairmanship of Mr. Harrison Kling.

In 1953, a 4-H Baby Beef Club was organized. This club has continued with members raising

Hereford and Angus calves. The Baby Beeves are exhibited during the Fair and are sold at auction. Prize money is awarded. The calves will be judged on Thursday afternoon at 1:00 p.m. They are sold at the New Holland Sales Stables after being judged.

Pigs and Rabbits will be shown and judged Thursday afternoon. Pigs will be offered at Public Auction on Friday afternoon at 2 p.m. to the highest bidder. Mr. Earl Fisher, director of the Fair, is in charge of these events.

The Fair Office will be located in the theater building on East Main Street. Phone number: 354-5880.

Officers for this year's Fair are: Rufus E. Good, President; Parke Groff, Vice-President; Robert Lowry, Secretary; and Carl Groff, Treasurer.

Concession space overseer, Richard Geist, has been laying plans for the various concessions on the streets for the annual fair.

Camels have been known to drink 30 gallons of water in 10 minutes.

## STEER FEEDERS

- FOR FASTER GAINS
- LESS FEED COST
- MORE PROFITS

FEED

Gehman's Beef Cattle Supplement

(Available with Stilbosol\*)

TO ORDER OR BOOK CALL

### GEHMAN FEED MILL, INC.

Denver

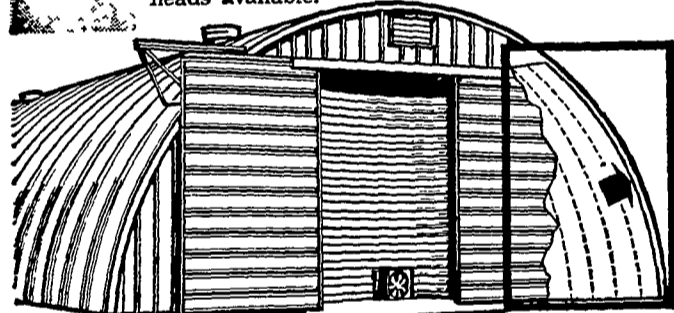
267-5585

\*Diethylstilbestrol Elanco Products Co.

## 1 BEHLEN GRAIN STORAGE CURVET

...with "extra rugged" walls

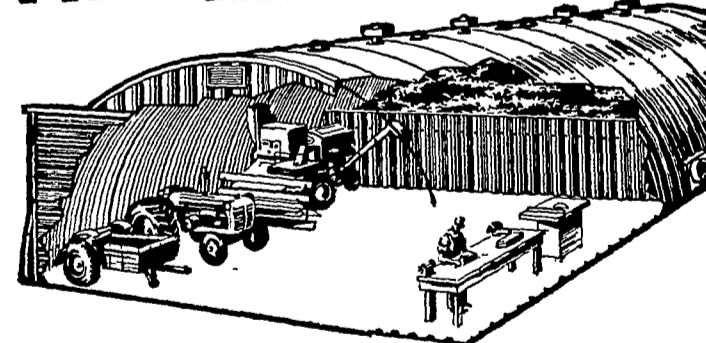
So strong you can safely store grain 12' high against sidewalls, 10' against endwalls. No ties, rods, or braces needed. In 40' widths. Length unlimited. Special drying floors and grain bulkheads available.



## BEHLEN ALL-STEEL

*Curvets*

## TWO NEW MODELS!



## 2 MULTI-PURPOSE CURVET

...for grain and/or machinery

Your economical buy... a utility building with high-and-wide doors to permit entry of largest implements. Addition of wall-floor ties lets you store grain 12' high against sidewall. In 53' and 40' widths. Length unlimited.

Come in and let us help you with your building problems... there's a Behlen Curvet to fit your needs!

# FREY BROS.

Fred Frey, Mgr.

R. D. #2, Quarryville, Pa. 17566  
786-2235 (717)

## SEE YOU At The Lampeter Fair

SEPTEMBER 25 - 26 - 27

ON DISPLAY

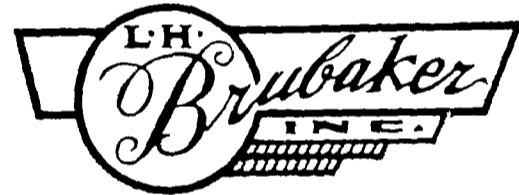
A variety of farm, lawn and garden equipment including:

- Allis Chalmers
- New Holland
- Starline
- Stand-by PTO and Engine driven generators

General Electric Versatronic Range

Reduces roasting and baking time from hours to minutes.

Other GE Appliances

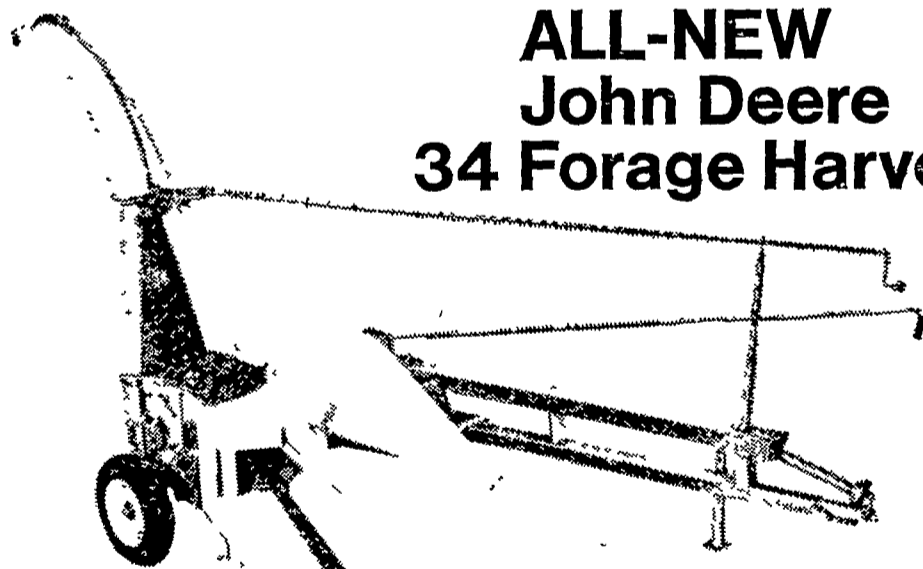


R. D. 3, Lititz, Pa.

350 Strasburg Pike, Lancaster

Phone: Lanc 397-5179 — Strasburg 687-6002 — Lititz 626-7766

## ALL-NEW John Deere 34 Forage Harvester



This low-cost silage-maker is new from the ground up

New cylinder cutterhead. New, exclusive pivoting feeding mechanism. New knife sharpener that's second to none. New row-crop units with exclusive rubber-gathering belts for positive feeding. New windrow pickup and mower-bar units. New strength, simplicity, and convenience. That's how new the low-cost John Deere 34 Forage Harvester is. See us about one. Use our Credit Plan.

Landis Bros. Inc.  
Lancaster 393-3906

Shotzberger's  
Elm 665-2141



M. S. Yearsley & Sons  
West Chester 609-2990

A. B. C. Groff, Inc. Wenger Implement Co.  
New Holland 354-4191 Buck 284-4467