

● **DHIA**

(Continued from Page 1)
 days in milk, had 496 lbs. of milk, 3.8 percent, and 190 lbs

of butterfat per day.
 The highest lactation completed was by Violet in the herd of Mowery Frey Sr., 1831 Hans

Herr Drive, Lancaster. She produced 8y, 305d, 21,558m, 3.9%, 840f.

The second high lactation was completed in the herd of Robert and Joan Book, Bareville. Jill finished with 4-10y, 305d, 21,346m 3.8%, 809f

● **Earl Stauffer**

(Continued from Page 1)

representatives of local chapters. President of the Cloister Chapter, Earl has dairy, steer, hogs and crop projects. He started his dairy herd by purchasing a calf with his own money and he won two others (one from the Lancaster County Holstein Association and one from the local chapter). Two other dairy animals in his present herd valued at \$2,960 were raised from his foundation animals. Of special interest is his two-year-old heifer classified Very Good and making a fine record.

His steel and hogs were purchased with the aid of a local bank and he works on a 50-50 partnership with his father on his barley, alfalfa and corn projects.

Stauffer has a long list of accomplishments including the 1st place records for two years in



LANCASTER COUNTY STAR FARMER, Earl Stauffer, (left) son of Mr. and Mrs. Clarence Stauffer, Ephrata R1 is congratulated by Stanley Musselman one of the judges for the selection made at the Farm and Home Center Tuesday afternoon. Earl is a member of the Cloister FFA Chapter and is a senior at Ephrata High School. L. F. Photo

the state record book contest, showing interest and enthusiasm in and he was a delegate to the national convention last year.

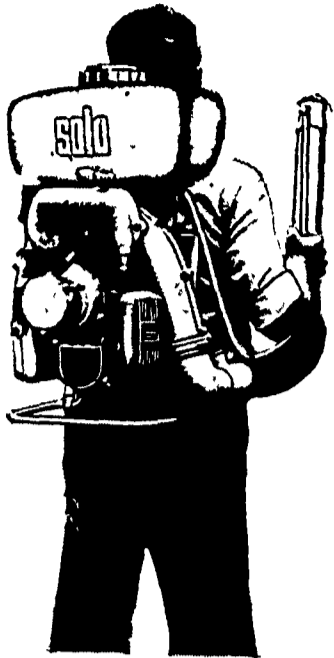
Other participants were Jessie Lewis Ayeis, Vo-Ag Teacher at Ephrata said, 'Earl has been an outstanding leader in the local FFA and has a very sincere interest in the future of Agriculture. He is polite along with having

TOBACCO FARMERS SAVE

Spray Your Own Tobacco

With the Easily Portable SOLO MIST BLOWER You Can Spray Your Own Tobacco for Sucker Control.

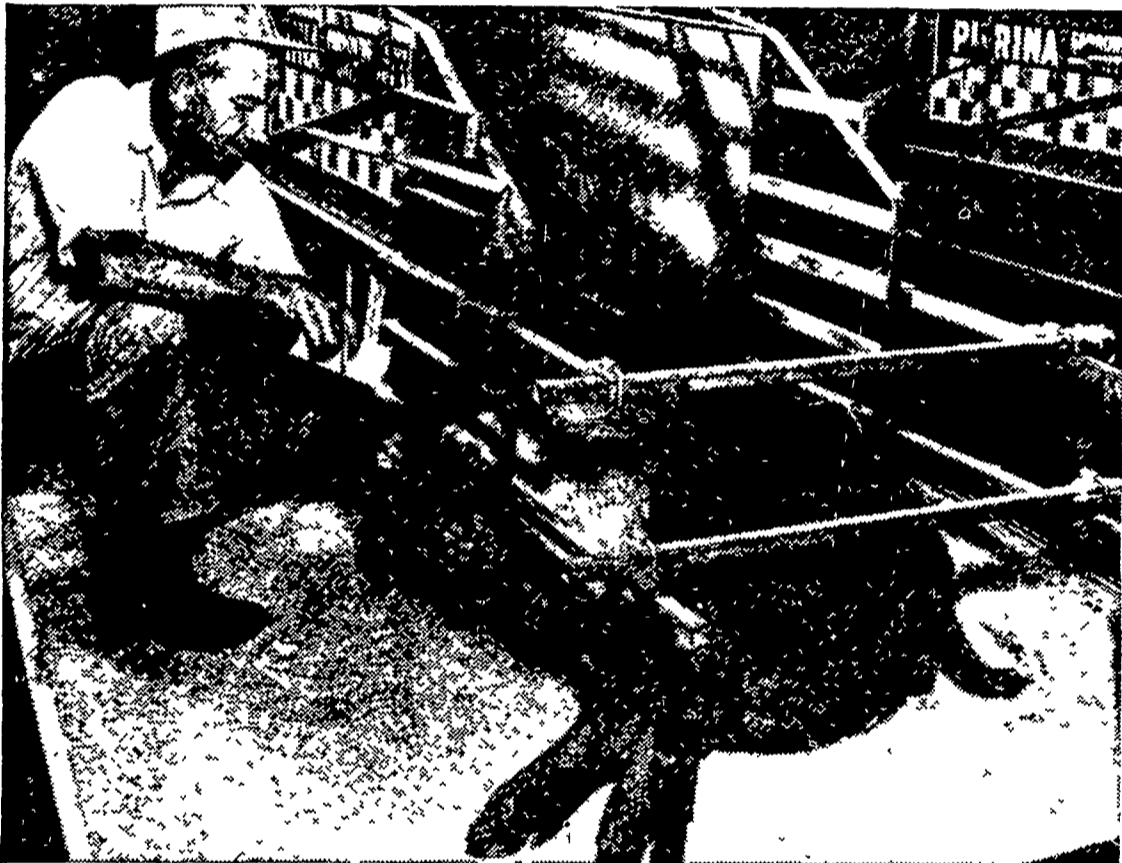
- Treats 4 - 6 rows at a time
- Lightweight & Effective
- Powered by 2 1/2 H.P. Engine
- Also see us for MH-30



We Sell & Service — Call Us For a Demonstration

ORGANIC PLANT FOOD CO.

GROFFTOWN RD., NEXT TO WATERWORKS
 Ph. 392-4963 or 392-0374



HOW CAN I HELP MY SOWS FARROW BIG LITTERS?

Feed Purina Sow Chow, of Course.

Yes, Purina Sow Chow has been built through many years of careful nutritional studies on over 5,000 litters of pigs at Purina's Research Farm.

Purina Sow Chow has everything your sow needs to help her develop, farrow and nurse big litters of husky pigs and maintain her own body weight at the same time.

Authorities estimate that 20% to 33% of all pig embryos conceived are resorbed by the sow early in the gestation period, if she is fed a poorly balanced ration.

So hogmen who neglect the ration they give their sows, lose lots of pigs *they never even see!*

That's why it pays to feed a proved ration like Purina Sow Chow.

Stop in and see us today about either Purina Sow Chow Complete or Purina Sow Chow Concentrate to mix with your grain.

Ira B. Landis

Ph: 394-7912
 1912 Creek Hill Rd., Lanc.

West Willow Farmers Assn., Inc.

Ph: 464-3431
 West Willow

James High & Sons

Ph: 354-0301
 Gordonville

John J. Hess, II, Inc.

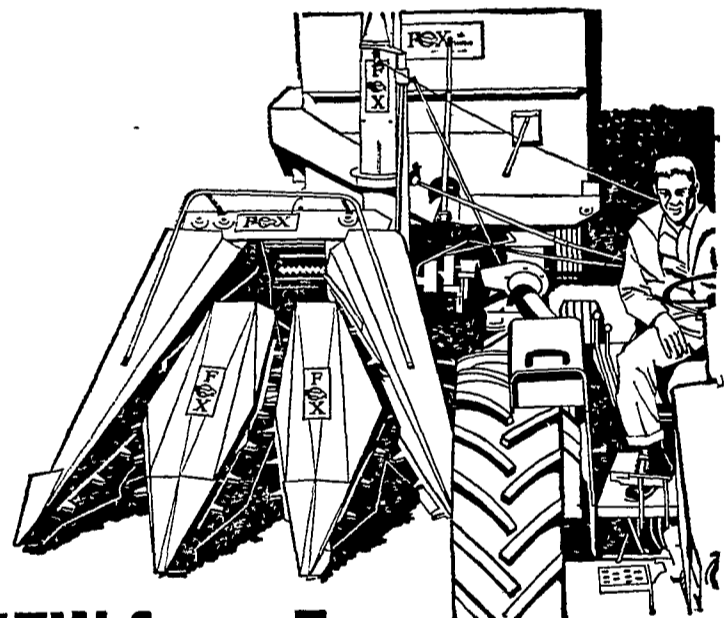
Ph: 442-4632
 Paradise

John B. Kurtz

Ph: 354-9251
 R. D. 3, Ephrata

Wenger's Feed Mill Inc.

Ph: 367-1195
 Rheems



NEW from Fox: Quick-change 3-row corn unit

Get corn out of your fields faster with our new Model 3C three-row corn unit.

It's for 26" to 32" rows. Mounts on our new Super-1000 pull-type or Model Super-D self-propelled forage harvesters.

Check these features:

- One-piece sickle—easily removed by loosening only three bolts.
- 3 rows of vertical gathering roller chain on each side to handle better any tall or down corn, sorghum and cane.
- Vertical shafts and chains set back closer to base unit paddle roll for better feeding.
- One bevel gear case to drive entire unit—drop-forged gears, high-carbon steel shafts.
- Heavy-duty roller chain for drive chains.
- Anti-friction bearings throughout.
- All-welded steel main frame and superstructure.

SEE US FOR A DEMONSTRATION

FARMERSVILLE EQUIPMENT CO. FOX

R. D. 2, Ephrata Ph. 354-9221