

Pennsylvania Paid Out \$29,439 For Livestock Killed By Dogs

Pennsylvania paid out \$29,439.06 in indemnities during the 1967-68 fiscal year to pay for sheep, livestock and poultry killed by dogs, the State Department of Agriculture has announced.

T. Luke Toomey, director of the Department's Bureau of Dog Law Enforcement, said indemnities amounting to \$22,511.65 were paid for 1,380 sheep killed by dogs. Poultry indemnities amounted to \$3,212.75 while indemnities for livestock (cattle, goats, hogs, horses, ponies) totaled \$3,714.66.

Settlements amounting to \$6,170.19 were paid by dog owners in killings where ownership could be determined, Toomey said.

Counties where the greatest sheep damages were reported: Greene (369 sheep, \$5,143 indemnities); Washington (235 sheep, \$3,584); Tioga (67 sheep, \$1,327)

Counties where the greatest poultry damages were reported: Monroe (\$402); York (\$341.55); Perry (\$366); and Berks (\$315.75).

Counties where the greatest livestock damages were reported: Chester (\$620); Susquehanna (\$435); Washington (\$435); and Wyoming (\$373).

Test Corn For Eating

Strip back the husk of a well-filled corn ear on the plant. Crush a few of the kernels with your thumbnail. If a milk-like juice spurts from the kernels, your corn is in the milk stage and ready for picking. If the milk doesn't come, and the kernels feel doughy, you have waited too long, says James O. Dutt, extension vegetable crops specialist at The Pennsylvania State University. So use the milk test to make your summer sweet corn eating the best yet.

New Approach To Face Fly Control

Agricultural scientists at The Pennsylvania State University have found a way to control face flies, one of the major fly pests among cattle in the U. S.

Their method is to use a concentrate of the bacterium *Bacillus thuringiensis* in cattle feed, according to entomologist Arthur A. Hower Jr., and zoologist Tien-Hsi Cheng. This concentrate, thoroughly mixed with cattle feed, nearly eliminates face flies normally developing in cattle manure.

The findings may lead to increased milk and meat production among dairy and beef cattle, as announced recently in the "Journal of Economic Entomology." Face fly annoyance in summer interferes with grazing of cattle on pastures, thus reducing milk and meat yields. Peak of the face fly season comes during late July and early August.

The most effective test dosage of *Bacillus thuringiensis* permitted only two pupae to develop in cow manure, compared to 981 pupae developing in manure without the concentrate. Neither pupae emerged as an adult face fly. The feed additive was equivalent to 125 percent of a cow's daily diet.

A lower dosage, making up slightly over one-half percent of a cow's daily diet, prevented 80 percent of the development of eggs to pupae. In both dosages the feed additive was eaten twice daily.

Thorough mixing of bacillus concentrate with the feed is necessary for best results.

The Penn Staters found that cows will eat around the additive if it is merely thrown in with the feed. The material is still in the experimental stage. Hopefully, it may eventually be produced commercially at prices acceptable to the average farmer.

Breakfast For Little League To Be Served

The second All-Pennsylvania breakfast for Little League champions will be served Friday, August 23, at Williamsport where the 1968 Little League World Series will be played.

Teams from five nations will be guests at the breakfast—four regional champions from the United States and championship teams from Europe, Canada, Latin America and Japan.

The breakfast is being arranged by the Bureau of Markets of the Pennsylvania Department of Agriculture and sponsored by the Pennsylvania Restaurant Association.

On hand to greet the Little League players and team officials will be State Agriculture Secretary Leland H. Bull and Richard C. Funk, executive vice president of Pennsylvania Restaurant Association.

The menu will include fruit juice, scrambled eggs, ham and bacon, home fried potatoes, toast, milk, apple butter and jams — all from Pennsylvania.

SOLO MIST BLOWER

2 models available
3 and 5 HP

- Horizontal spraying distance 25 ft. and 35 ft.
- Liquid Tanks 2½ gal. and 3 gal.

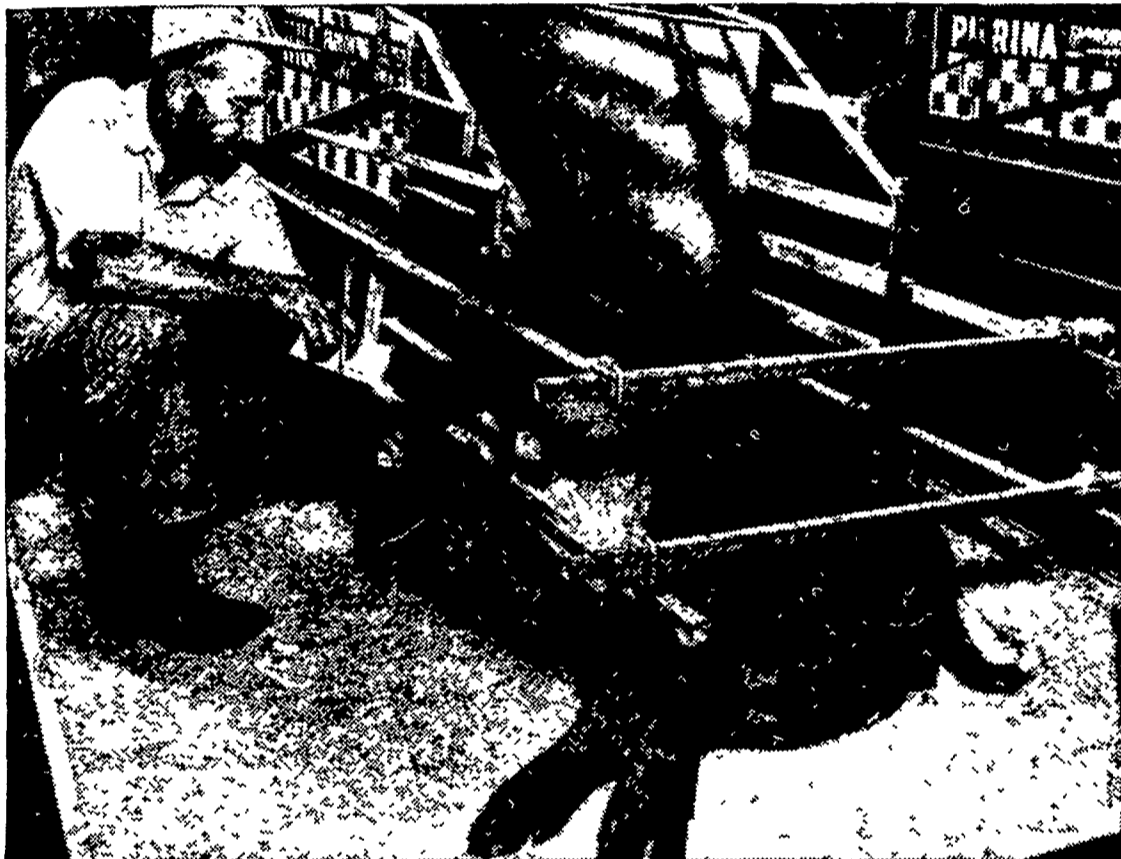


LESTER A. SINGER

"Lancaster County's Only Dealer Specializing In Sprayer Sales and Service"

Ronks, Pa.

687-6712



HOW CAN I HELP MY SOWS FARROW BIG LITTERS? Feed Purina Sow Chow, of Course.

Yes, Purina Sow Chow has been built through many years of careful nutritional studies on over 5,000 litters of pigs at Purina's Research Farm.

Purina Sow Chow has everything your sow needs to help her develop, farrow and nurse big litters of husky pigs and maintain her own body weight at the same time.

Authorities estimate that 20% to 33% of all pig embryos conceived are resorbed by the sow early in the gestation period, if she is fed a poorly balanced ration.

So hogmen who neglect the ration they give their sows, lose lots of pigs they never even see!

That's why it pays to feed a proved ration like Purina Sow Chow.

Stop in and see us today about either Purina Sow Chow Complete or Purina Sow Chow Concentrate to mix with your grain.

West Willow
Farmers Assn., Inc.
Ph: 464-3431
West Willow

James High & Sons
Ph: 354-0301
Gordonville

Ira B. Landis
Ph: 394-7912
1912 Creek Hill Rd., Lanc.

John B. Kurtz
Ph: 354-9251
R. D. 3, Ephrata

Wenger's Feed Mill
Inc.
Ph: 367-1195
Rheems

John J. Hess, II, Inc.
Ph: 442-4632
Paradise

BUY A JOHN DEERE TRACTOR AND KEEP YOUR MONEY TOO!

How? Say "yes" — and the new John Deere Tractor you've been eyeing (any model, any power size, any tractor-tillage-implement combination) is yours through our special credit deal. Chances are your trade-in will amply cover the down-payment. Then, from now until spring . . .

Finance charges? Here's what you'll owe between now and March 1969: nothing!

Keep your money — get today's prices, today's trade-in allowances . . . on us. The earlier you stop in, the more you stand to gain. See us now!

M. S. Yearsley & Sons
West Chester 609-2990



Shotzberger's
Elm 665-2141

A. B. C. Groff, Inc.
New Holland 354-4191

Wenger Implement Co. Landis Bros. Inc.
Buck 284-4467 Lancaster 393-3966

