



Plaids are big fashion news for fall. Some of them are so beautiful that it's easy to buy without fully realizing the problems involved in cutting and matching. And, some plaids require much more thought and planning than others.

The easiest plaid to work with is the "even" or balanced plaid with the same design on both sides of a center stripe, both crosswise and lengthwise. To de-

termine if the plaid is even or uneven, fold the fabric at the center of any repeat of the design both lengthwise and crosswise. If the spaces and colors overlap exactly, it's a balanced plaid. If not, it's an unbalanced or uneven plaid.

An unbalanced plaid may be uneven vertically, horizontally or in both directions. If the unbalanced plaid is the same on the wrong side, reverse the fabric for easier matching. Fabrics with a twill weave (most wools), a napped surface or a printed design will show a definite wrong side.

You may need extra fabric for matching an uneven plaid because you must cut all the tops of pattern pieces in the same direction. Follow yardage requirements and layout guide for "fabric with nap." If the plaid has a large repeat, you may need extra

yardage for an even plaid, too. This will vary, but often you can allow at least one extra repeat for each fabric length you cut.

Choose the right style for your fabric; show off the beauty of the fabric with a simple design. Also, few seam lines mean fewer matching problems. Diagonal darts or diagonal seaming detail will distort the plaid. Curved or eased seams, or seams which join but are cut on a different slant, rarely match exactly.

Match the plaid at the most obvious seams; usually this means matching from the hemline up. Plan for a specific lengthwise line to hit the center of the body both front and back. This vertical stripe should match through skirt, bodice, collar.

A bold crosswise stripe will call attention to that part of the figure. Be careful where you place it. If our pattern has set-in sleeves, the same crosswise stripe should circle the body at the armhole notches.

When pinning pattern to fabric, use the notches on the pattern as your matching guides. Line up corresponding notches on the same fabric stripe. However, matching should be planned for stitching lines rather than cutting lines.

Plaids on the bias can be used for interesting effects, but this is usually more satisfactory on an even plaid.

Each plaid problem is different since it depends on the fabric, your pattern and your figure. Plaids can be fun if you enjoy the planning required, but if your time and patience are limited, better stick to a small check or a plain fabric.

Election Day has been the first Tuesday after the first Monday in November since 1845 when President Tyler signed the bill as one of his last acts in office. Before that each state held elections when it was close.

For the Farm Wife and Family

Ladies, Have You Heard?...

By Doris Thomas, Extension Home Economist

Tips On Buying Lettuce

If you're buying iceberg lettuce, look for a head that's firm but not too solid — maybe even a little loose. Hard heads may be over-mature and bitter. Look also for heads with green outer leaves — the greener the leaves, the greater the vitamin content.

Pressing Essential To Making Quality Garments

To keep a garment from having the home-made look, press after each step is completed. Pressing during construction is different from ironing or pressing the completed garment.

Pressing is a lifting and lowering motion with the iron.

Ironing is a back and forth movement.

Always press with the grain of the fabric.

During construction, press on the wrong side of the fabric.

For top pressing, use a press cloth between the iron and the garment.

To prevent the imprint of darts and seams from showing always the same, slip a strip of brown paper between the seam or dart on the wrong side of the fabric before applying the iron.

Test iron temperature on a fabric scrap to prevent scorching. You can use steam on most fabrics without causing shrinking or spotting. Some fabrics require a press cloth when steam is used.

When both seam allowances are to be pressed in the same direction, first press the seam open, then press in the direction the seam should go to give a sharper seamline on the right side of the fabric.

Press edge firmly before top-stitching to give a neater finish.

Press seams along line of stitching for a smoother seamline.

Do final pressing carefully. Avoid overpressing the right side of the garment to eliminate "shine."

Celebrate With Sirloin

Sirloin is sometimes hard to recognize because the bone isn't always the same. It may be small and round, triangular, or the large pin bone.

If the bone is removed, the meat may be labeled top sirloin or sirloin butt steak.

Whatever the name, choose steak that's at least one inch thick for broiling so you can serve it juicy and tender.

Cook Potatoes With Skins On
Cooking potatoes with the skins on saves time and vitamins. Just scrub skins well and cook as usual.

For crisp skins on baked potatoes, prick potatoes with a fork and bake in a moderate oven after the usual scrubbing.

For soft skins on baked potatoes, rub with fat or wrap in foil before baking.



THOMAS

CUSTOM SPRAYING

HIGH PRESSURE WASHING
and
DISINFECTING
in all types of poultry houses.

MAYNARD L. BEITZEL

Witmer, Pa.

Phone 392-7227



PEACHES

Yellow & White
Freestone

EXCELLENT

- FROZEN
- CANNED
- SLICED
- FRESH

Many Varieties to Choose From!

SWEET CORN Your Choice
White or Yellow
PULLED FRESH EVERY MORNING

Also Available

- RAMBO APPLES
- TOMATOES
- PLUMS
- COBBLER POTATOES

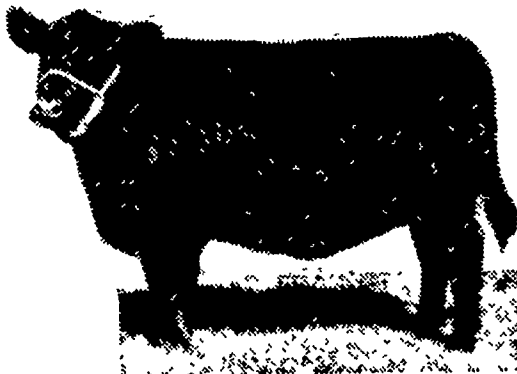
SHANK Fruit Farms

Rt. 324, New Danville Pike
Daily 10-8, Sat. 'Til 6, Closed Sun.

**SAVE AT
SAVE RITE
MARKET**

743 S. BROAD ST.
LITITZ, PENNA.

**Finance Your
Feeder Cattle
At**



**FARMERS NATIONAL
Lititz BANK**

LITITZ, PENNSYLVANIA

9 East Main St.
Lititz

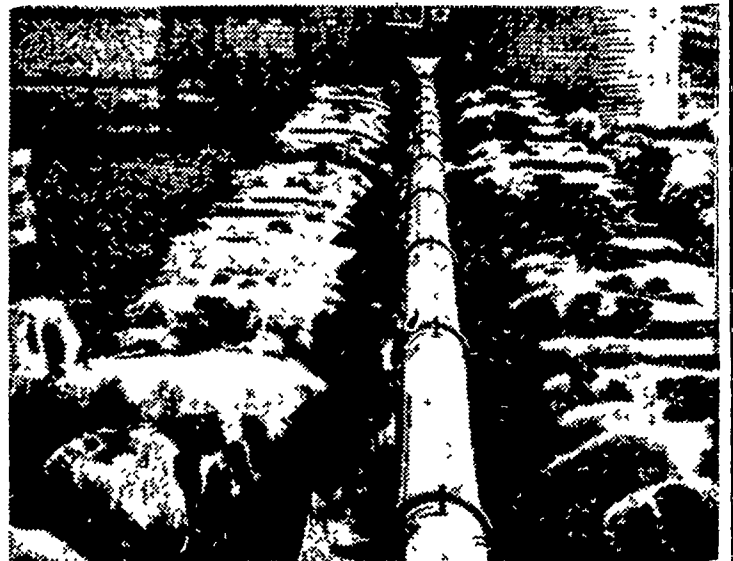
Neffsville

Lancaster Shopping
Center

SEE US FOR
PROMPT — COURTEOUS SERVICE

Member F.D.I.C.

**FEED CATTLE FASTER
AND MORE EFFICIENTLY
THAN EVER BEFORE!**



NOW! Feed up to 200' of bunk per drive... Feed multiple lots... Blend complete rations with...

VAN DALE'S NEW AUTOMATIC MULTI-FEEDERS

From the pioneer in silo unloading, come two low-power, mammoth capacity, bunk feeders for in-the-barn or feedlot feeding. You can feed from more than one silo (at the same time). Feed out to from one to four-or-more lots. Feed any material with big 9" or 12" true, bearing-suspended augers, (no metal-to-metal contact.) Feed entire bunk at one time; eliminate crowding.

High capacity and dependability... call us and we'll come out to see you, at your convenience.

CALEB M. WENGER

R. D. 1, Drumore Center 548-2116 QUARRYVILLE, PA.