

Nat'l 4-H Congress Slated For Chicago in December Dec. 1-5 in Chicago. Currently there are three million 4-H members with 73% residing in rural areas and girls outnumber the boys 55% to 45%. Some 1,650 delegates are expected to attend the 47th annual 4-H Congress which is scheduled

Farmers

FOR 120 DAYS FREE STORAGE
ON YOUR 1968 WHEAT

— CALL 626-2296 —

ZARTMAN'S ROLLER MILL

P. O. Box 23
Lititz, Pa. 17543

TOP DRESS NOW

With

FARMERS' FERTILIZERS

Pulverized and Granular

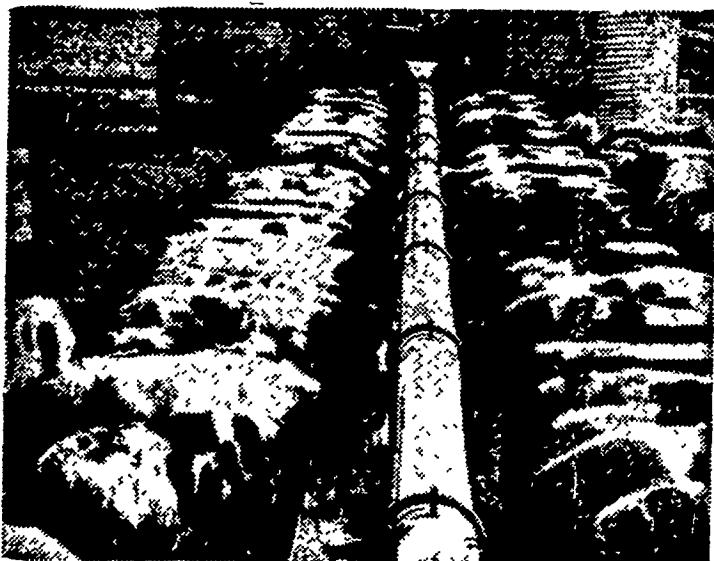
Call Us Now

FARMERS' FERTILIZER WORKS

For the Farmer

365 WEST BAINBRIDGE STREET
ELIZABETHTOWN Ph. AC 717 367-1211
Quality Fertilizers Since 1904

FEED CATTLE FASTER AND MORE EFFICIENTLY THAN EVER BEFORE!



NOW! Feed up to 200' of bunk per drive . . . Feed multiple lots . . . Blend complete rations with . . .

VAN DALE'S NEW AUTOMATIC MULTI-FEEDERS

From the pioneer in silo unloading, come two low-power, mammoth capacity, bunk feeders for in-the-barn or feedlot feeding. You can feed from more than one silo (at the same time). Feed out to from one to four-or-more lots. Feed any material with big 9" or 12" true, bearing-suspended augers, (no metal-to-metal contact.) Feed entire bunk at one time; eliminate crowding.

High capacity and dependability . . . call us and we'll come out to see you, at your convenience.

CALEB M. WENGER

R. D. 1, Drumore Center 548-2116 QUARRYVILLE, PA.

CUSTOM RATES FOR SELECTED FARMING OPERATIONS

Job	Basis of Charge	Mountain Section	Valley Section	The State
HARVESTING				
CORN PICKING	Acre	\$ 7.20	\$ 6.80	\$ 6.80
CORN, FIELD SHELLING	Acre	10.20	10.00	10.00
COMBINING SMALL GRAINS	Acre	6.90	6.50	6.70
HAY MAKING:				
Raking	Acre	2.20	2.05	2.10
Crushing	Acre	2.75	2.50	2.60
Pick-up baling:				
Twine	Bale	.11	.11	.11
Wire	Bale	.14	.14	.14
Haying, cut, rake, bale & store	Bale	.27	.28	.28
Mowing hay	Acre	2.75	2.65	2.65
Mowing pasture	Acre	2.75	2.55	2.65
SILAGE MAKING:				
Upright silo filling	Ton	2.15	2.30	2.20
Trench silo filling	Ton	2.10	1.80	1.90
Field chopping silage:				
Chopper and Blower with:				
1 man, 2 wagons, 1 tractor	Hour	13.10	12.80	12.90
2 men, 2 wagons, 2 tractors	Hour	15.10	15.50	15.40
2-4 men, trucks, 2 tractors	Hour	20.60	20.30	20.40
PLOWING AND CULTIVATING				
PLOWING, MOLDBOARD PLOW:				
Spring	Acre	4.85	4.75	4.80
Fall	Acre	5.00	5.00	5.00
Sod	Acre	5.30	5.20	5.30
PLOWING DEEP	Acre	6.00	6.00	6.00
PLOWING, DISK	Acre	5.40	5.00	5.20
DISKING, Tandem	Acre	2.95	2.90	2.90
Offset	Acre	3.40	3.35	3.35
DISKING, with harrow	Acre	4.15	3.20	3.60
HARROWING:				
Spike tooth	Acre	2.55	2.00	2.25
Spring tooth	Acre	2.60	2.35	2.40
CULTIVATING:				
Sweep cultivator	Acre	2.75	2.55	2.60
Weeder	Acre	2.20	2.25	2.20
STALK CUTTER, Power takeoff	Acre	2.90	3.20	3.10
CULTIPACKER	Acre	2.25	2.15	2.20

Farm Custom Work Rates Show Moderate Increase

Many of the Farm Machinery custom rates show moderate increases from last year, with only a few demonstrating declines, according to F. Richard Shively, Agricultural Statistician. Sample fluctuation or shifts in the quantity or quality of service rendered may have been responsible for part of the rate changes. Some rates included in the sam-

and services rendered. The area covered by the two regions for which rates are listed are shown in the outline map above. The "valley section" appears to be generally lower than the "mountain section", possibly reflecting differences in size of equipment and topography common to the two regions.

ple average appeared to be too low to yield a fair return to labor and investment, and apparently other considerations besides monetary pay were involved.

The rates as published should be considered as guides, rather than absolute indications of fair charges. Individual reports show a considerable range in rates, reflecting variable work conditions

Bulldozing rates averaged \$11 per hour, covering 18 different crawler models, and ranged from \$5 to \$18 per hour. The most commonly reported bulldozer was the Caterpillar D-4, with a range of \$9 to \$10.50 and an av-

(Continued on Page 17)

Mistblower Duster Combination

The Most Powerful Knapsack Ever Built!

With the Kiekens Mist Blower you can apply:

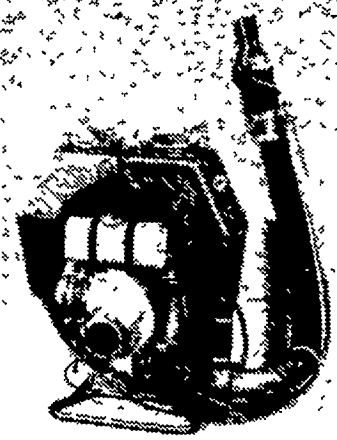
- * LIQUID
- * POWDER
- * DUST
- * GRANULAR CHEMICAL

USE

MH 30, insecticides, herbicides, fungicides, soil sterilants, lawn and tree dyes and aquatic chemicals.

SPRAY or DUST

Tobacco, trees, shrubs, vegetables, recreation areas, industrial areas, lakes or ponds.



Technical data for Model 66 TT Kiekens Mist Blower

Versatile — use same tank for liquid, dusts or granules, no extra attachments needed.
Chemical tank capacity 3.5 gal. (twin tanks)

Engine:

3 h.p. at 7,100 rpm. — 2 cycle
1 1/2 oz. fuel consumption per hr.
Air Speed at nozzle—328 ft.p.sec.
—225 mph
Air volume — 320 cu. ft./min.

Weight of complete sprayer empty — 23 lbs.

Recoil starter.

Coverage—25 to 33 feet vertical,
33 to 40 feet horizontal

Other models available.

Call today for demonstration.

SALES & SERVICE

J. C. EHRLICH Chemical Co., Inc.

736 East Chestnut St.

Lancaster, Penna. 17604

Area Code 717 Phone 397-3721