



QUEEN OF THE FURROW, Lynn Heistand, receives a special trophy from Aaron Stauffer, representing the Lancaster County Soil and Water District at the Air Tour, held last week. The trophy featuring a model airplane was donated to the district by the New Holland Airport.

● **The Stoners**

(Continued from Page 1)

Present chairman Mrs. C. Victor Hoar said that more than 50 percent of the host families of last year have reinvented their Shared Holiday guest for this year. She noted the program has grown to the point where, in the first two periods this year, there will be as many children participating as in the three periods last summer.

The Shared Holiday program is said to broaden the horizons of both host and guest and open a pathway to better understand-

ing between people. It is a person-to-person idea to give the child the feeling that someone cares.

And, although the Raymond Stoner family never mention their contribution to the program as anything outstanding, it is obvious from the work and play going on at the Stoner farm that they and the 63 other families in the area who are hosting Shared Holiday guests, along with all the volunteer helpers who keep the program going, are contributing to the development of the individual child and the betterment of the community by their efforts.

Study Shows Many More Hogs Made Top Grade, USDA Says

Forty-nine percent of the hogs slaughtered under Federal inspection were estimated to grade U.S. No. 1 in a year-long study completed in March 1968, the U.S. Department of Agriculture announced Monday.

This was a sharp improvement in quality over 7 years ago, when a comparable study placed only one-third of the 1960-61 season's hogs in the top category. The typical slaughter gilt or barrow carcass last season was also about one-third of an inch longer. The longer hog is generally leaner.

These preliminary findings,

from a survey by USDA's Economic Research Service aided by the Consumer and Marketing Service, are being released before the complete report because of widespread current interest by the livestock industry.

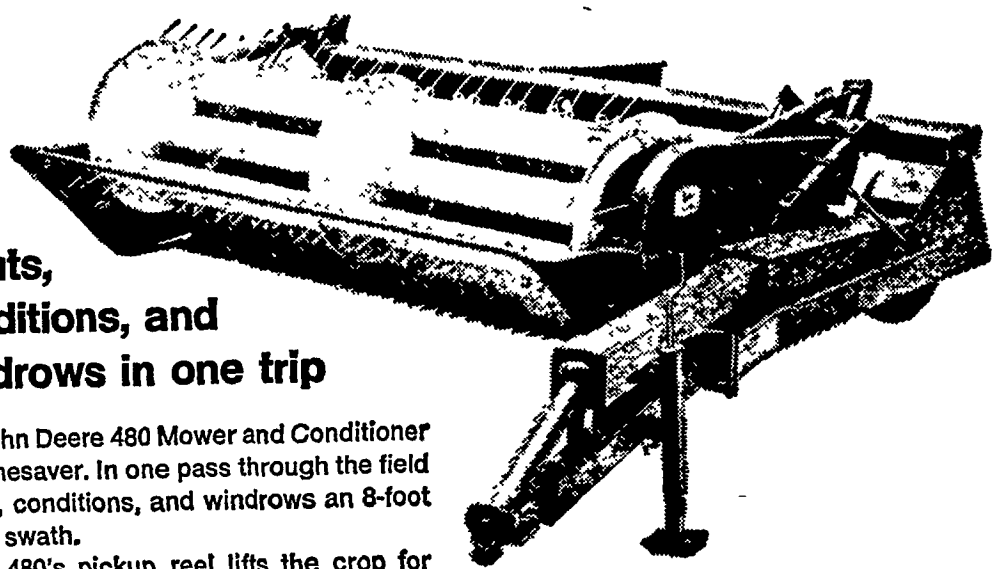
There were 35 percent of the hogs in the study grading No. 2, compared with 38 percent in the earlier study. Near the bottom of the scale, hogs grading No. 3 were estimated at 12 percent of the crop, down from 25 percent for the 1960-61 season. Finally, hogs grading Medium and Cull totaled less than 3 percent in both studies.

The study was conducted using the carcass grade standards in effect from July 5, 1955 to April 1, 1968. The Department revised the official standards for

barrow and gilt carcass grades as of April 1, 1968. Under the revision a substantial number of carcasses formerly grading U.S. No. 1, 2, or 3 will now grade No. 2, 3, or 4, respectively. The new U.S. No. 1 grade is limited to a small proportion of superior meaty carcasses.

Carcass grades were obtained for 57,000 hogs, or close to one in a thousand of total slaughter during the past season. A C&MS meat grader sampled and graded 121 full-day hog kills in 56 federally inspected slaughtering plants across the United States. The sample was chosen to represent all hogs in all regions and seasons. The resulting estimate for barrow and gilt grades was determined to be accurate within 1.5 percentage points.

John Deere 480 Mower and Conditioner



It cuts, conditions, and windrows in one trip

The John Deere 480 Mower and Conditioner is a timesaver. In one pass through the field it cuts, conditions, and windrows an 8-foot 9-inch swath.

The 480's pickup reel lifts the crop for cleaner cutting. Fast roll speed, large roll diameter, and wide roll opening practically eliminate conditioner plugging and wrapping.

See us soon about a new 480 Mower and Conditioner. Use our Credit Plan.



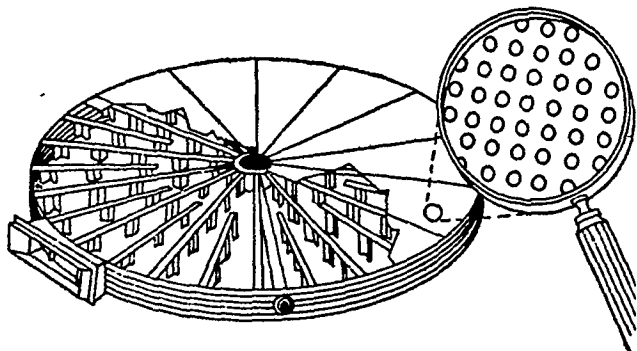
M. S. Yearsley & Sons
West Chester 609-2990

A. B. C. Groff, Inc.
New Holland 354-4191

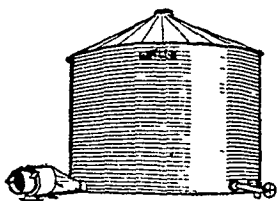
Landis Bros. Inc.
Lancaster 393-3906

Wenger Implement Co.
Buck 284-4467

Sholtzberger's
Elm 665-2141



THE SAFEST GRAIN DRYING FLOOR...



another reason why Butler Stor-N-Dry® is the best grain drying system

No other drying floor has all these advantages. They safeguard your grain... and your profit:

- 25% open space for unrestricted air flow
- Clear-punched perforations—no rough edges to bend shut
- Heavy-gauge galvanized construction
- Installed in bolt-free sections that can be easily removed for cleaning
- Special steel floor supports hold up to 24' of grain safely, guide drying air to all parts of the bin
- Unloading sump and auger tube built right into the floor, as standard equipment at no extra cost. The optional automatic bin unloader matches this floor exactly

Come in today! Let us recommend the Stor-N-Dry system that fits your exact crop and climate needs.

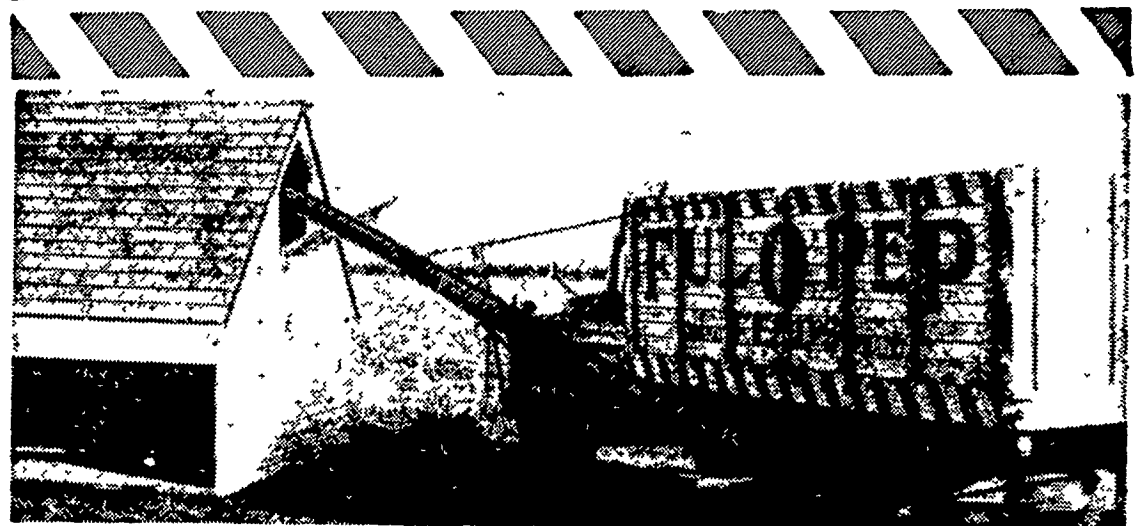


Full assembly and erection plus filling and unloading systems using bucket elevators or auger conveyors available.

M. K. HOKE EST., INC.

148 S. Main St., Manheim, Pa.

665-2266



MAKE YOUR GRAIN PAY—THE PEP-MIX WAY!

...with a more efficient, precision-built ration

There's a big difference between ordinary grinding and mixing—and Pep-Mixing. Let our Pep-Mix Service eliminate unnecessary labor on your part, keep feed costs at a minimum and still give you high quality rations. **Pep-Mixing is precision mixing...** to exacting Ful-O-Pep specifications. Our people are trained to use our modern equipment and build Pep-Mix feeds that are designed for this

area and formulated by Ful-O-Pep Feed Research Specialists. We operate in accord with the Pep-Mix Program that includes rigid inspections and quality control measures.

No waiting for your mix... Pep-Mix Feeds are made up on a scheduled basis and ready for you upon arrival. Possibly we can purchase your grain as partial payment for your Pep-Mix Feeds. See us soon.

STEVENS FEED MILL, INC. Stevens & Leola

Harold H. Good
Terre Hill

Grubb Supply Company
Elizabethtown