

FIBERGLASS BELTS MAKE A DIFFERENCE

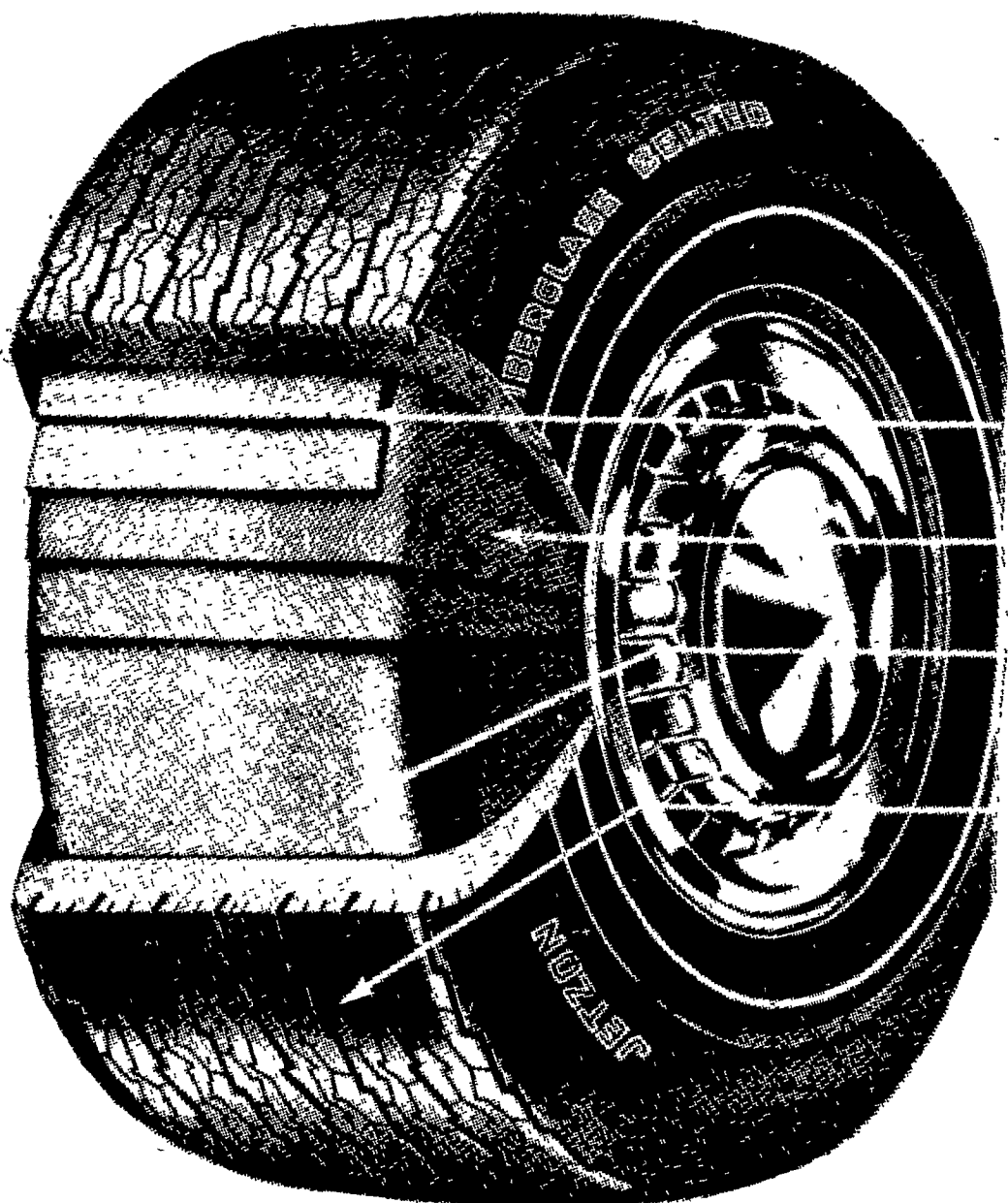
- No Tread Squirm Eliminates Abrasion
- Coolest Running Tire On The Road
- Tread Groves Remain Open
- Sidewall Flexing A Thing Of The Past
- Truly, Tomorrow's Tire For Today And Tomorrow's Car

No Special Wheels Needed

Note: If Your Original Equipment Tires Deliver, Say 20,000 Miles — You Can Now Expect Up To 40,000 Miles.

THE INCOMPARABLE BELTED BIAS PLY FIBERGLASS TIRE IS HERE!

LET US CHECK YOUR TIRES NOW FOR THE COMING JULY 4th HOLIDAY



Fiberglass Belts

Run circumferentially around the tire directly under the tread and hold the tread firm. This new construction provides up to 100% more mileage. †

JETZON

Fiberglass Belted

Premium* High Performance Passenger Tire

FIBERGLASS CORD BELTS . . .

hold the tread firm for more mileage . . . up to 100% more! †

POLYESTER PLIES . . .

for smoother, more comfortable, safer riding qualities.

GUARDOBAND . . .

an ebony protector which eliminates the hazards of sudden tire deflation.

IMPROVED, WIDER TREAD . . .

The lower profile, up to 2-inches wider tread, is compounded and designed to keep your ride sure on the straight-away, controlled on the turn. 8,000 brawny edges grip the road securely, in wet weather or dry, for improved traction . . . up to 15% more!

* Premium is Jetzon's designation. No industry wide standard exists for Premium Tires.

† Mileage will depend upon tire size and driving conditions.

HURST TIRE SERVICE

East Earl Rt. 1 One mile west of Blue Ball on Route 322

Phone 354-2328