

## Natural Resources Control Social And Economic Growth

Natural resources must be used more wisely than ever before to fulfill present needs and still be available for enjoyment by future generations, a wildlife specialist at The Pennsylvania State University declared recently.

"These resources form the basis of our life and culture, and they control social and economic growth," Robert G. Wingard, chairman of forestry and wildlife Extension at Penn State, told delegates participating in a statewide Youth Conservation Day at nearby Camp Kanawake in Huntingdon County.

Wingard served as main speaker at the field day sponsored by the Pennsylvania Federation of Woman's Clubs. The West Virginia Pulp and Paper Company and Pennsylvania Forestry Association sponsored awards for conservation youth projects.

"Today we see many changes on the face of Pennsylvania. There is less land in farms, increasing forest acreage, suburbs moving across the countryside, and more people seeking the benefits of unspoiled farm

and forest environments," the Penn State official pointed out.

Although our capacity to produce an abundance of food and wood is increasing rapidly, it is clear that people are demanding more land and water for homes, industry, farms, recreation, hunting, fishing, highways, and scenic beauty, he said. All of this makes conservation programs and planned resource development even more important.

Wingard, in discussing Pennsylvania water pollution problems, emphasized that water is the common denominator that ties together all of man's interests. On its journey from watershed to sea, water affects fishing downstream, recreation on a man-made lake, irrigation on a valley farm, flood damage in a town, and safe supplies for human use.

"Pollution from sewage and industrial wastes, acid mine drainage, pesticide chemicals, and other contaminants that enter the stream at any point will have far reaching effects throughout the watershed," the Extension Service specialist said. "In many cases the fisher-

man is most immediately affected by pollution; but when water no longer supports fish, it has lost much of its value for other uses, too," he added.

Pennsylvanians have always been quick to grasp the initiative in conservation efforts. This was partly because we had such an abundance to start with, partly because of the harsh lessons taught by exploitation, and also because of the wisdom and foresight of dedicated leaders," Wingard emphasized.

He cited several Commonwealth projects that have contributed to improvement in conservation efforts. These include the 25,000 private ponds constructed in the past 25 years; Allegheny Reservoir at Kinzua; Raystown Reservoir in Huntingdon County; Tocks Island National Recreation Area on the Delaware River, and pollution control legislation.

Wingard, in his talk, complimented the youth on their project accomplishments and challenged them to increase their efforts to improve people's understanding of conservation programs. Only a well informed citizenry can make intelligent decisions as to how natural resources can best be used to meet immediate and future needs.

## SIDEDRESS ANHYDROUS AMMONIA

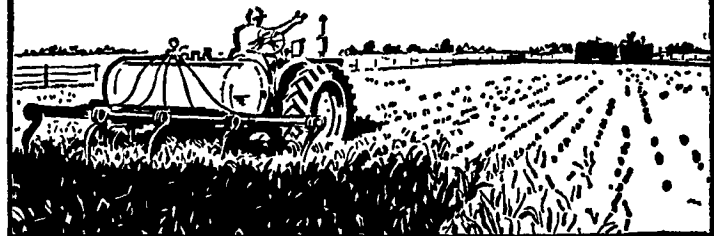
### For top corn yields

CALL FOR PROMPT DELIVERY



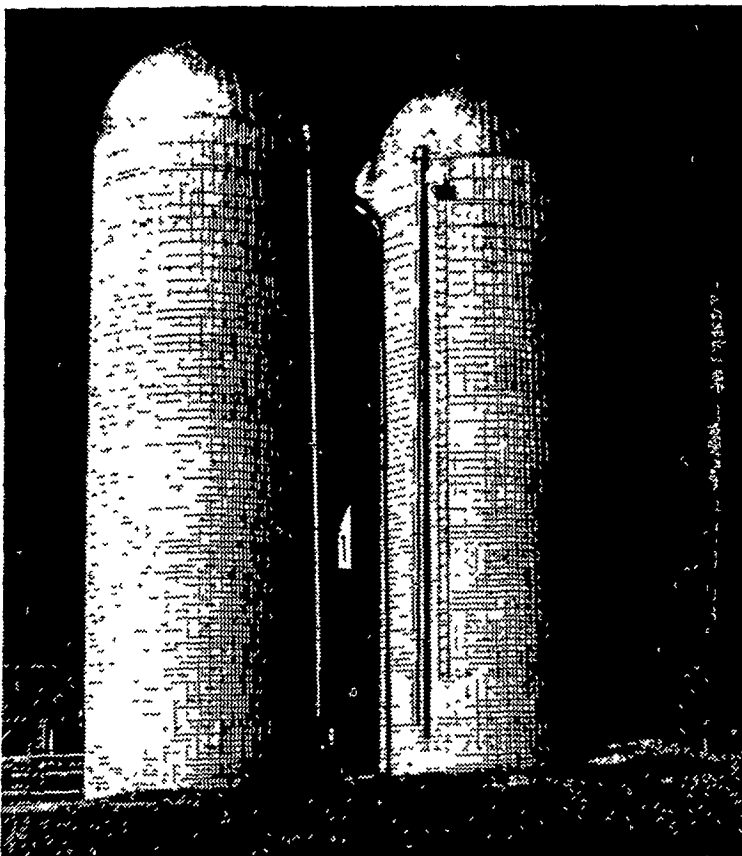
## HIESTAND INC.

Marietta, Pa. Phone 426-1101



## Your Best Buy...

# A CONCRETE STAVE SILO



Save Money on Feed Costs . . .  
Farm Easier, More Profitably . . .  
Save Time, Work & Money On Your Farm

For complete information and prices  
see us before you buy.

C. B. HOOBER & SON  
Intercourse, Pa.  
717-768-3501

NEVIN N. MYER  
Chester Springs, Pa.  
215-827-7481

AGRI INC.  
Ephrata R2, Pa.  
717-354-5374

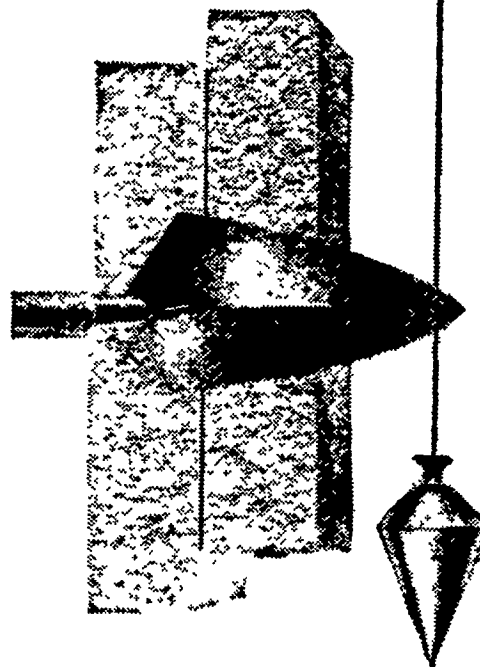
COPE & WEAVER CO.  
New Providence, Pa.  
717-786-7351

C. H. ZIMMERMAN  
Atglen, Penna.  
215-593-5129

MANUFACTURED BY

## LANCASTER SILO COMPANY

2436 Creek Hill Road, Lancaster, Pa. 17601



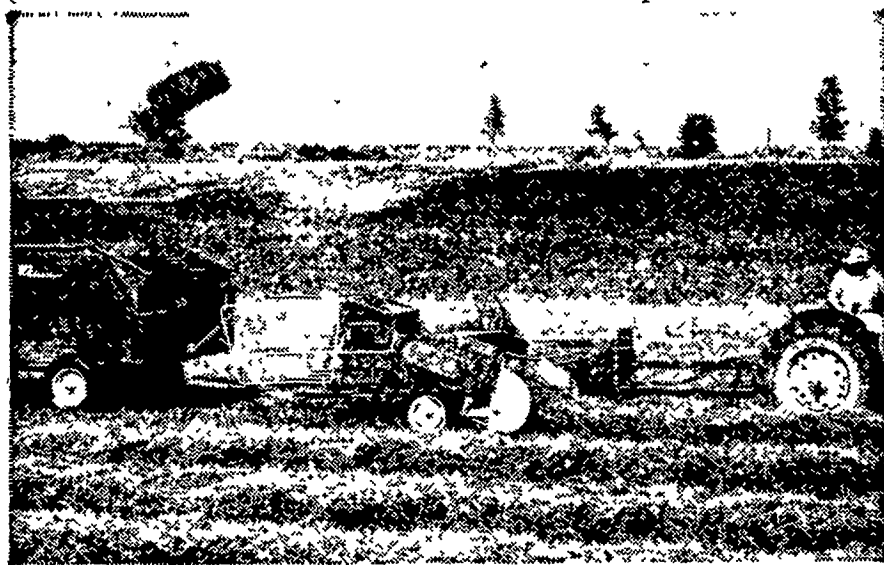
## HOLLAND STONE

*a luxury you can afford*

Inside, outside, you'll find the rich quarried look of HOLLAND STONE adds a touch of real elegance to your building designs. And yet, HOLLAND STONE is one of the most economical building materials today. Its unique versatility in size and shape lends a structural freedom to builders, meeting new ideas, as well as cost problems. Comes in a wide choice of naturally warm, distinctive colors, plus Colonial white.

**NEW HOLLAND**  
CONCRETE PRODUCTS, INC.  
NEW HOLLAND PENNSYLVANIA

## Full-sized baler with a compact price



### John Deere 24-T Twine-Tie Baler

The John Deere 24-T Twine-Tie Baler has a low price tag on it. And for this low price you get big-baler benefits. You get big capacity. You get accurate tying. You get neat, 14x18 bales that are tied for keeps. You get high-quality construction. You get a baler protected by many safety devices. Have your 24-T equipped with the Bale Ejector and baling and loading become a fast, easy, one-man job. See us for full details on a John Deere 24-T Baler with Bale Ejector. The Credit Plan makes it easy to purchase machines from The Long Green Line.

Wenger Implement Co.  
Buck 284-4467

M. S. Yearsley & Sons  
West Chester 609-2990



Shotzberger's  
Elm 665-2141

A. B. C. Groff, Inc.  
New Holland 354-4191

Landis Bros. Inc.  
Lancaster 393-3906