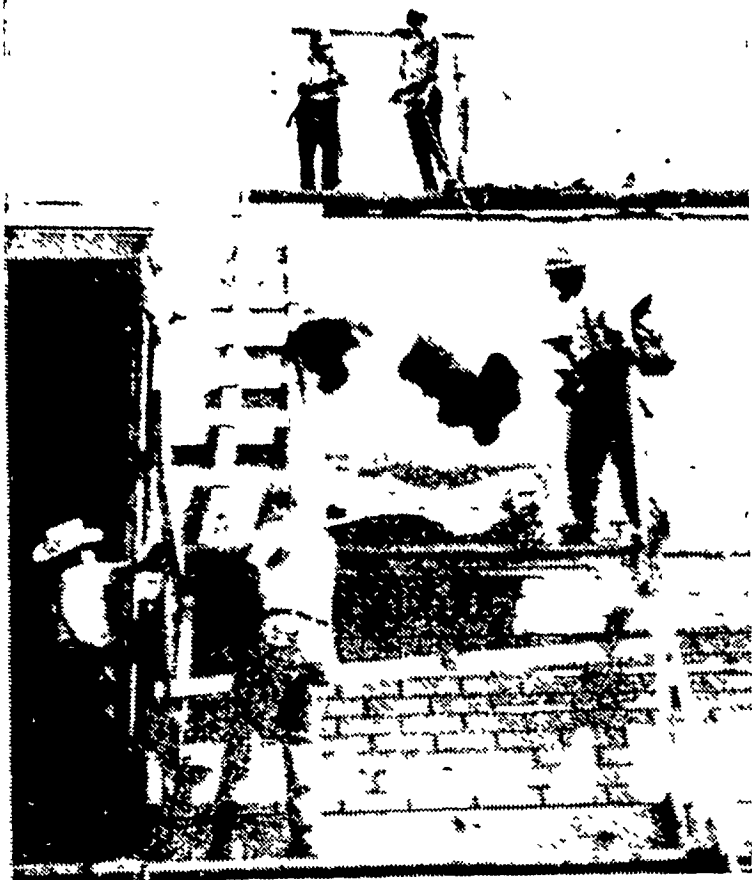


# Not Over The Moon...

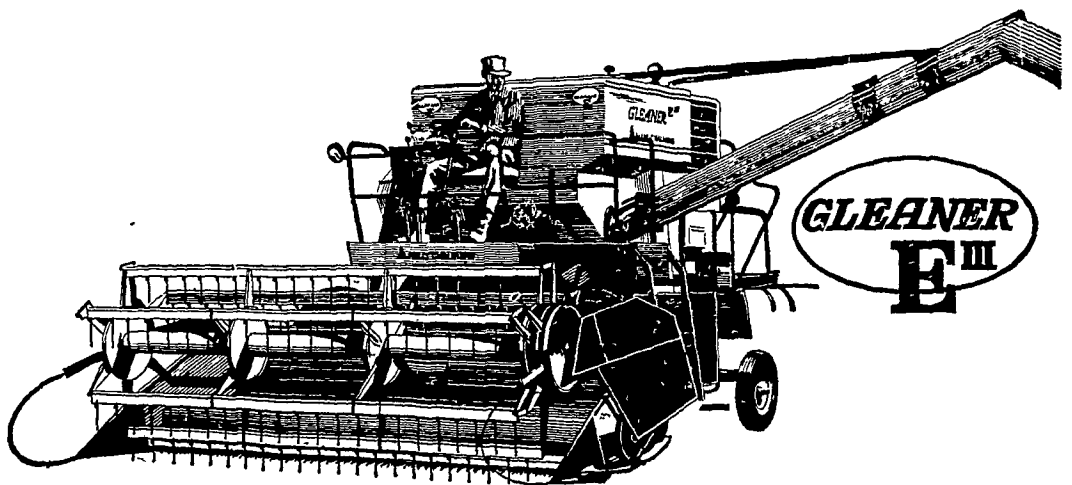


... Over The Black And White Sale Barn. The fiberglass cow that is the trade mark of Parke and Charles Myers sale barn located along the 230 by-pass was erected Thursday morning to her stand on top of the roof of the newly constructed barn being readied for the anniversary sale to be held in July

In the above Lancaster Farming picture story, workmen take the 150 lb. cow up, over the roof from the rear of the barn and let her down the front side to her vantage point over-looking the farm below.



## BIG NEW GLEANERS HERE



- 5,448 Sq. In. Separating Area.
- 2,680 Sq. In. Cleaning Area.
- 66 Bu. Wing-Type Grain Bin.
- 10'-12'-13' Grain Headers.
- 2-row 40"-3-row 30"-4-row 20" Corn Heads.

See us for the Big New Ones. Our Allis-Chalmers credit plans make 'em so easy to own.



**Nissley Farm Service**  
Washington Boro, Pa.

**Grumelli Farm Service**  
Quarryville, Pa.

**L. H. Brubaker**  
Lititz, Pa.

**L. H. Brubaker**  
Lancaster, Pa.

**Roy H. Buch, Inc.**  
Ephrata, R. D. 2

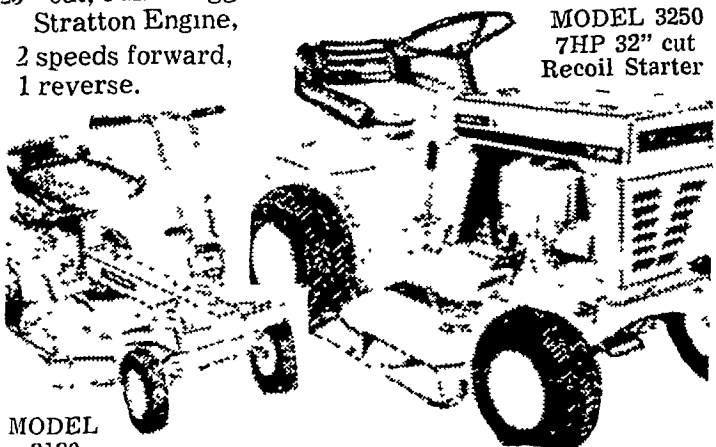
**N. G. Myers & Son**  
Rheems, Pa.

**Allen H. Matz Farm Equipment**  
New Holland

### YARD-MAN SALES & SERVICE LAWN TRACTORS

25" cut, 5 HP Briggs & Stratton Engine,  
2 speeds forward,  
1 reverse.

MODEL 3250  
7HP 32" cut  
Recoil Starter



MODEL 3190

## ELI F. KING

Pond Road

Ronks R. D. 1