

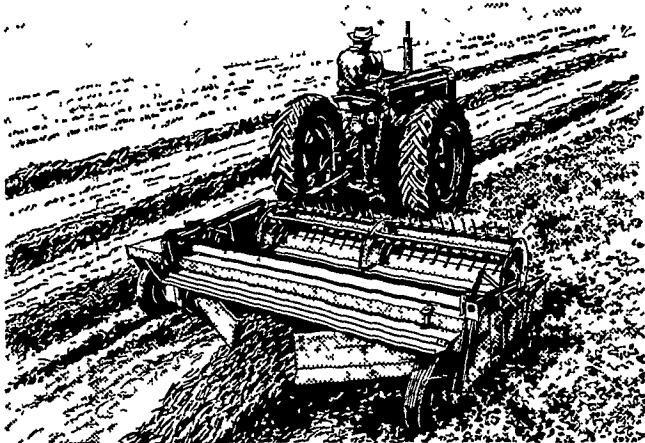
LOOKING OUT ONTO THE PATIO at the Lancaster County Farm and Home Center. The Center is located on ten acres of land provided by the late Elmer L. Esbenschade and covers more than 28,000 square feet. It now houses five government service agencies and special meeting rooms for farm organizations.

Landscaping of the grounds was planned by a specialist from Penn State and shrubbery was donated by individuals and nurseries, as well as the labor required for the grading and seeding.

The Agencies now having their offices in the building are the Lancaster County Cooperative Extension Service, the Lancaster County School Board, the Agricultural Stabilization and Conservation Service, the Soil Conservation Service, and the Farmers Home Administration. Plans have been completed for dedication of the Center on June 9 at 2 p.m. The featured speaker will be Dr. Russell E. Larson, dean of the College of Agriculture, The Pennsylvania State University.

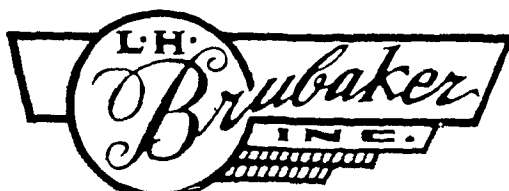
## For Full Market Reports Read LANCASTER FARMING

### Hard-To-Handle Crops Are Easy Going For A Haybine® Mower-Crusher!



New Holland's new Haybine® mower-crusher sweeps through the tallest, thickest crops at up to 8 mph . . . producing an 8 ft. 9 in. swath (of a windrow) of fully-conditioned, fluffed-up hay. Whether you bale or chop your hay crops, you'll like the way the reel keeps the cutterbar clear, and practically eliminates plugging . . . even in tangled, downed crops! See this one-man haying machine now. Phone or stop in for a demonstration.

**NH NEW HOLLAND**



350 STRASBURG PIKE, LANCASTER  
R. D. 3, LITITZ, PA.

Phone: Lanc. 397-5179 — Strasburg 687-6002 — Lititz 626-7766

## A View Of The Governor's Office

Did you know that fraud perpetrated on Pennsylvania consumers costs more money than that needed to operate the State's health and welfare programs for an entire year?

Although only a relatively few individuals and firms on the fringes of the legitimate business community engage in fraudulent practices as a matter of course, it has been estimated that those who do currently drain nearly \$500 million from

Pennsylvania's economy alone.

And the pity of it is that the majority of victims are the elderly, the poor, the uneducated. What, for example, could be more disheartening than the case of the elderly couple, retired after a lifetime of labor being defrauded of their meager savings!

To provide the Pennsylvania consumer with the strongest protection program in the entire United States, this Administra-

tion has drawn on two years of experience in the operations of our new Bureau of Consumer Protection.

As a result, the General Assembly has before it for action today several bills designed: first, to give you, the consumer, the information you need to protect yourself from gyp artists, mechanisms to put these fraudulent operators out of business permanently.

At the very heart of the program is a bill to make the Bureau of Consumer Protection, which exists now only by Executive Order, a permanent part of the Department of Justice—and to give that agency the authority it does not now have to crack down on fraudulent operators.

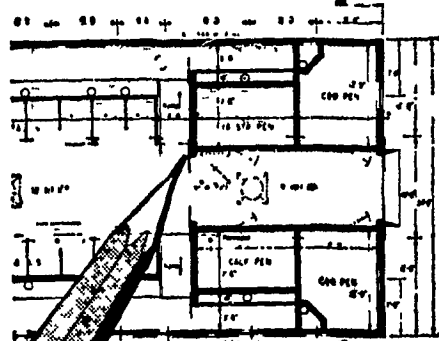
Under present law, it is not at all unusual for the Justice Department to detect fraudulent practices only to have the operators continue in business simply because the authority to force them to stop is weak and unclear. Clearly, those who live by fraud will not easily yield to persuasion, which is about the only real weapon we now have to protect the public.

Secondly, I have asked the General Assembly to immediately spell out as illegal some 14 different forms of deceptive business practices and unfair competition, including the creation of confusion and misunderstanding through either false advertising or the substitution of pressure tactics for legitimate salesmanship.

Of key importance to this measure is a provision for substantial penalties for violators, including fines and forfeiture of corporate franchises. In other words, those who refuse to do business ethically will be put out of business.

The third major thrust of this new consumer protection package involves improvements to the Goods and Service Installment Act enacted in 1966. Based on our experience over the first full year of operation, this proposal is necessary to give the Attorney General specific authority for its enforcement.

## SAVE LABOR—SAVE MONEY build your barn with a pencil first



USE  
SINCE 1883  
**STARLINE**  
HARVARD ILLINOIS  
**FREE**  
BARN PLANNING  
SERVICE

Call us if you'd like your barn planned by an expert. This Starline Planning Service for new or remodeled barns is yours FREE!

Dimensional drawings will be made by Starline's Barn Engineer right on your farm and it won't cost you a red cent.

We sell and service Starline Barn Equipment, Barn Cleaners and Silo Unloaders.

STARLINE PLANNING SERVICE—A SERVICE TO FARMERS SINCE 1883

Contact Your Starline Representative

**LARRY HIESTAND**

R. D. 1, Lebanon, Pa.

717-273-7394