

ASCS NEWS

Information from the office of the Agricultural Stabilization & Conservation Service, 1383 Area-dia Road (Farm & Home Center) was distributed this week. It is as follows:

Final Date for Wheat Certification

Farmers enrolled in the 1968 wheat program must report wheat acreage and certify compliance with the program by June 7th.

Farmers who fail to certify by this date will be ineligible for wheat certificate payments.

June 7th is also the final date to dispose of excess wheat to come into compliance with the program.

Golden Eagle Passports

Golden Eagle Passports and a directory of Federal Recreation areas are available at the ASCS Office.

These passports, costing \$7.00 will admit the purchaser and all who accompany him in a private noncommercial vehicle to designated recreation areas.

The passports now on sale are valid until April 1, 1969.

Wool Incentive Payments

Wool growers are reminded to file application for incentive payments on wool and unshorn lambs sold.

Applications must include signed sales slip with all sales information and those for lambs must include the certification that the lambs were unshorn at time of sale.

ASCS Regional Meeting

County and Community Committeemen and Office Managers from 10 counties will attend a Report and Review meeting at the Kutztown Grange Hall on Tuesday, May 21.

Purpose of the meeting is to discuss and review existing farm programs, their accomplishments in recent years, pending farm legislation and a review of the agricultural situation.

Ideas will be solicited for improvements in programs to better meet the needs of Pennsylvania agriculture.

Wheat Loan Rate Announced

The basic county price support loan rate for Lancaster County has been announced at \$1.41 per bushel.

This rate is applicable for wheat stored on the farm. Warehouse storage will be about ten cents per bushel less. Discounts will be made on basis of grade determination.

This year grade determinations on warehouse wheat will be made by the warehouseman and it will not be necessary to send samples to Philadelphia for grade determination.

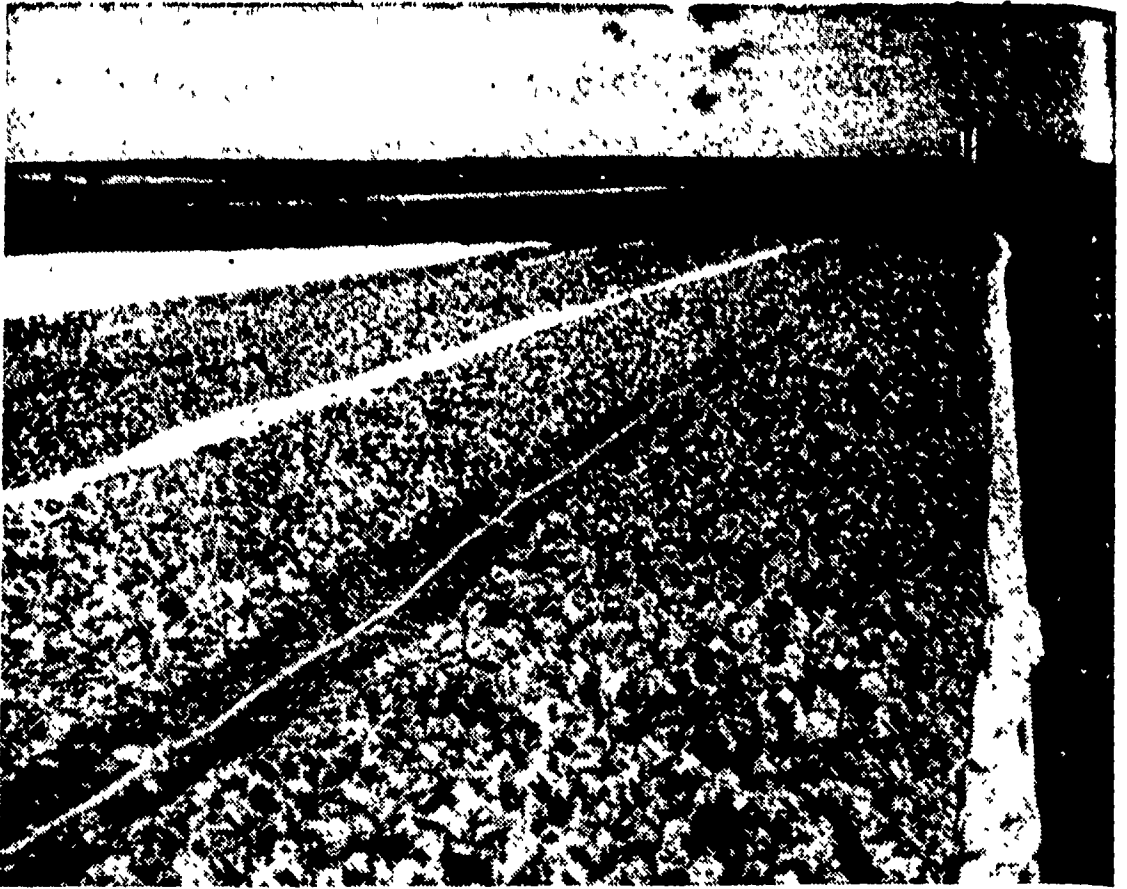
All farmers who participate in the wheat program are eligible for wheat price support.

● Rain Holds

(Continued from Page 1)

Stoltzfus and Shirk were planning to pull and plant 10,000 plants on Thursday—enough for two acres. "You can truly say," Shirk said, "today (Thursday) would have been the start of the tobacco planting season if the weather would have cooperated. We are now as anxious to get to planting as John is to get the plants out of the beds."

The team has had tobacco planted earlier than this only once. Last year the planting season was reported started about two weeks later due to a cool, late Spring.



THESE TOBACCO PLANT BEDS are uncovered for a few days before pulling to get them accustomed to the sunlight.

The first plants were scheduled to be pulled from these beds this week. L. F. Photo



A TOBACCO PULLER'S DELIGHT. These disease-free and well developed tobacco plants were ready for the first pulling this week on the John E. Stoltzfus Farm, Gordonville R1. By Thursday there were 7 to 8 inch plants ready to pull. L. F. Photo

HAVE RISING COSTS CUT INTO YOUR PROFITS?

Let **UGITE GAS** show you how to reduce the cost of your bottle gas needs, with our

New Agricultural Rates

UGITE GAS Inc.

Box 210

Ephrata, Pa.

Phone 717-733-2207

**37
BALER**

low cost
high capacity

MORE

CAPACITY

to you for high-performance **BALING**

see it today...

NEW
McCormick
**INTERNATIONAL
BALERS**

- ★ More capacity to handle heavy windrows
- ★ More capacity to tie firm, uniform bales
- ★ More capacity to keep on-the-go

The people who bring you the machines that work

C. B. HOOBER
INTERCOURSE 768-3501

COPE & WEAVER CO.
NEW PROVIDENCE 786-7351

KAUFFMAN BROS.
MOUNTVILLE 285-5951

INTERNATIONAL HARVESTER
Sales and Service
EPHRATA 733-2283

MESSICK FARM EQUIP.
ELIZABETHTOWN 367-1319