

ASCS News

Information from the office of the Agricultural Stabilization and Conservation Service, 1383 Arcadia Road (Farm & Home Center) was distributed this week. It is as follows:

Wheat Cards

Cards are being mailed to all wheat farmers, asking them to report the acreage of wheat to

be harvested in 1968.

It is very important that the card be returned as the acreage reported will be used in determining future wheat allotments. If the card is not returned, they will consider the wheat acreage to be zero and this could cause a reduction in future wheat allotments.

CCC Grain Bins

The County Committee has placed an order for 10 CCC grain bins to be shipped into

Lancaster County.

The bins are expected to arrive early this summer and they will be sold at public auction. Interested farmers should contact the county office and they will be notified when the bins arrive.

Resale Program

Farmers may extend 1967 price support loans on wheat, corn, oats and barley by making a written request to the County Committee. This applies to warehouse and farm-stored loans.

The loans may be extended for one year and can be liquidated at any time by delivery.

forfeiture of receipts or repayment.

Wool Payments

Payments of \$5867.33 have been made to 87 wool producers who sold shorn wool or lambs during 1967.

Payments were computed at 65.8 percent of net sales proceeds for shorn wool and \$1.05 per hundred pound liveweight of unshorn lambs.

These payments represent the percentage necessary to bring farmers' sales returns up to the support level.

Diverted Acreage Requirements Farmers enrolled in the Feed

Grain program are reminded that diverted acreage cannot be grazed between March 31 and September 1. No crop can be harvested. Also weeds must be controlled on diverted acreage and necessary measures must be taken by June 20 to prevent Canada thistle from going to seed.

Change in Office Hours

As of May 1, 1968, ASCS office hours will be 8:00 a.m. to 4:30 p.m., Monday through Friday.

Water expands 218 times in volume when changed to steam.



SAVINGS

When you buy



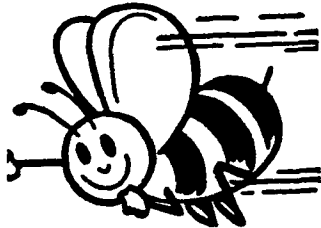
ALUMINUM CLAPBOARD SIDING

Year after year you will have that "Just Painted" appearance on the outside of your home that requires only an occasional "hosing down" to keep it looking new.

10 ATTRACTIVE COLORS

- Free Estimates
- Easy Terms

Application Service Available By Highly Trained Personnel

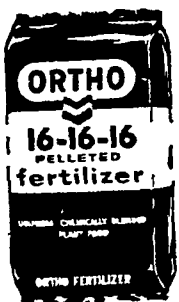


BEE-LINE SUPPLY CENTER

1027 Dillerville Rd., Lancaster

Ph. 397-4761

Looking For More Profit Per Acre?



We can show you how to increase your yields with an Ortho Unipel Fertility Program. We recommend Ortho 16-16-16 or 20-10-10 Plowdown with Ortho Starter Special 13-34-10 Starter Application High Analysis Fertilizers Give You Lower Costs Per Pound of Plant Food.

Helping the World Grow Better



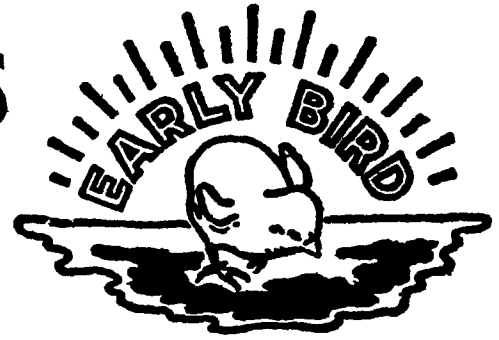
P. L. ROHRER & BRO., INC.

Smoketown, Pa.

397-3539

3 GOOD REASONS

WHY IT PAYS TO FEED



(One Is Sufficient — — Higher Returns From Your Flock!)

1. QUALITY FORMULATION

For greatest production at lowest cost.

2. QUALITY CONTROL

Every step, from the ingredient source till the feed reaches you.

3. QUALITY SERVICE

Planning, Programming, Marketing, Management, Record Systems. Yours. for the asking.

Contact your Miller and Bushong Service Representative or call us direct at Lancaster 392-2145 (Area Code 717)



MILLER & BUSHONG, Inc.

ROHRERSTOWN, PA.

"FINEST SERVICE ANYWHERE"