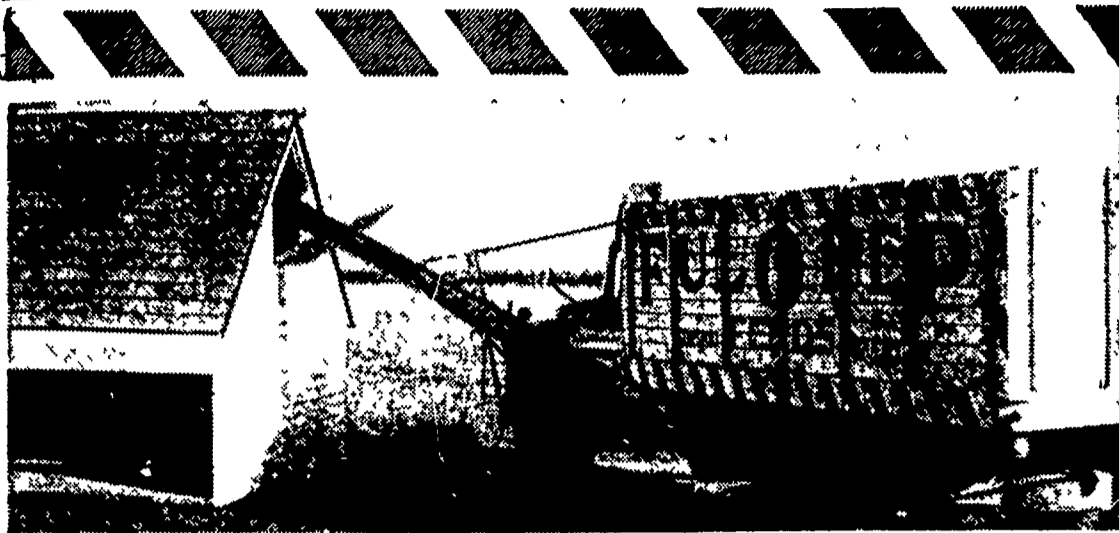


When one plan won't work— Advertising encourages busi- require more manufacturing
try another. ness and industrial growth by plants, more services, and more
helping sell more goods, which employment.



MAKE YOUR GRAIN PAY—THE PEP-MIX WAY!

...with a more efficient, precision-built ration

There's a big difference between ordinary grinding and mixing—and Pep-Mixing. Let our Pep-Mix Service eliminate unnecessary labor on your part, keep feed costs at a minimum and still give you high quality rations.

Pep-Mixing is precision mixing... to exacting Ful-O-Pep specifications. Our people are trained to use our modern equipment and build Pep-Mix feeds that are designed for this

area and formulated by Ful-O-Pep Feed Research Specialists. We operate in accord with the Pep-Mix Program that includes rigid inspections and quality control measures.

No waiting for your mix... Pep-Mix Feeds are made up on a scheduled basis and ready for you upon arrival. Possibly we can purchase your grain as partial payment for your Pep-Mix Feeds. See us soon.

H. M. STAUFFER & SONS, Inc. WITMER

Grubb Supply Company · Stevens Feed Mill, Inc.
Elizabethtown Stevens

Harold H. Good
Terre Hill



These are the top corn growers of the Octorara Area. They were recognized for the results of their agricultural know-how and industry with a trophy. It was the annual meeting for Grower's Chemical Corp., Milan, Ohio, in this area. W. R. Franklin, right, Asst. Director of Research, is presenting a trophy to Levi Smoker who got in the top group of corn growers by producing 204.6 bushels per acre with a cost of only \$11.00 per acre. Next to him is J. Melvin Mast, with a record of 204.5, cost \$11.00; then Paul Newswanger with 193.8, cost \$10.50; and John S. Stoltzfus, who grew 196.3, cost \$8.70. Thirty other farmers also received citations and recognition for producing over 100 bushels of corn per acre.

Investigate Our Program Today So That You Too Can
CASH IN ON HIGH PROFITS

"Our Research Is Your Profit"
GROWERS CHEMICAL CORP.

Write for Big List of Satisfied Customers

Distributed in Pennsylvania by

Eastern State Distributing Co.

RD 2, Lititz, Pa.

Phone 717 / 626-8909



HONORARY CHAPTER FARMER. Lancaster Farming editor, Everett Newswanger, receives award at the Annual Manheim FFA Parent and Son Banquet last week. Jerry Snively makes the presentation.

New Barn System Tried At Rutgers

Rutgers University will soon have a new dairy barn system such as no cow has ever seen before. The structure to be erected at the College of Agriculture and Environmental Science will be a new concept in animal housing designed by Mark E. Singley, Rutgers professor of agricultural engineering.

Leland G. Merrill Jr., Dean of Agriculture and Environmental Science, announced that the immediate aim of the experimental structure is to provide New Jersey dairymen with a barn design which will permit the maintenance of animals with the least amount of labor.

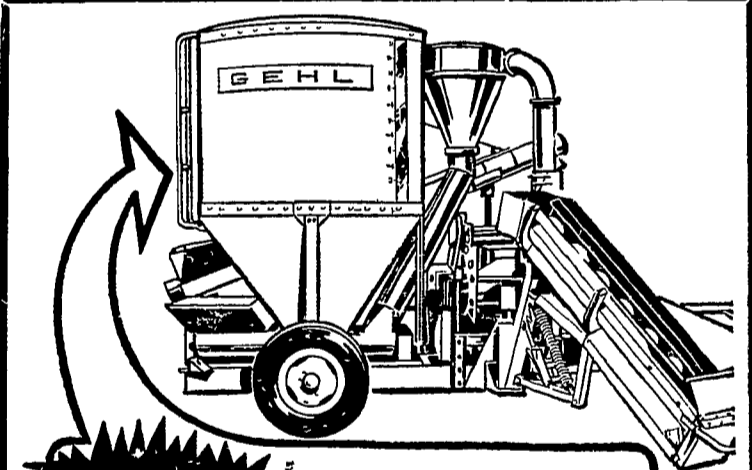
The structure will be tempera-

ture - controlled, self - contained system not unlike a space craft. The design is adaptable to other industrial uses.

The new barn will be round with wedge shaped stalls for 34 cows. It will be 60 feet in diameter, dominated by a silo 18 feet in diameter and 50 feet tall rising from the middle like an oversized candle on a birthday cake.

Cows will not be confined to their stalls but will be able to roam free about the barn and eat at will the prescribed feed from a trough at the base of the self-feeder silo.

DID YOU KNOW — The Hemlock was adopted as the official State Tree in 1930 and Mountain Laurel was designated as the official State Flower in 1933. (Dept. of Forests & Waters)



EXCLUSIVE FIBERGLASS TANK

Lightweight, Strong as Steel

Another Gehl first! New, optional Mix-All tank of modern fiberglass reinforced plastic — the space-age building material. Advantages: tank is strong as steel, yet weighs 1/4 as much; rust-proof (not affected by salt or minerals); permanent molded-in white color won't scratch, peel or require re-painting; smooth interior sides reduce feed bridging, allow faster unloading; insulates better, reduces moisture condensation.

OTHER GEHL MIX-ALL FEATURES:

- 66 thin, steel hammers that CUT... not POUND to give you a uniform grind.
- Semi-suction fan draws materials through screen quickly.
- Feed aerator cools all milled ingredients. Prevents caking.
- Swinging auger feeder uniformly loads the mill at your choice of speeds.

Come in! See the Gehl Mix-All with new fiberglass tank. Financing available.

Make us Prove it with
a Demonstration!



N. G. HERSHEY
& SON
Manheim

FARMERSVILLE
EQUIPMENT CO.
R. D. 2, Ephrata, Pa.