

Cereal Leaf Restrictions To Be Lifted

HARRISBURG — Shipping restrictions caused by cereal leaf beetle infestation will be lifted temporarily, the Pennsylvania Department of Agriculture announced recently.

Restrictions on shipping straw and marsh grass from Mercer, Butler, Lawrence and Beaver counties will be lifted Feb. 29 but will become effective again July 1.

Ear corn shipping restrictions will be lifted April 1 and will become effective again Aug. 1. Small grain and hay shipping restrictions which were previously removed will be reinstated June 1.

Henry F. Nixon, director of the Bureau of Plant Industry,

said the shipping restrictions are removed when there is no danger of transporting the beetle. The restrictions will be imposed again when harvests begin.

Last summer the Department banned shipping, from infected areas, certain agricultural products until they were fumigated or certified as being free of the beetle.

The beetle attacks small grains and grasses. It was found in Michigan six years ago and has since spread rapidly through Indiana and Ohio and into Pennsylvania.

Star Farmer of America is the nation's best known farm youth award. It is a check for \$1,000 presented each year by the Future Farmers of America Foundation to the FFA member judged most outstanding in farming and leadership.

Plans Under Way For Pa. Exposition

Plans are under way for the twelfth annual Penna. Livestock Exposition scheduled for Nov. 9-16 at the Farm Show Building, Harrisburg.

State Secretary of Agriculture Leland H. Bull, chairman of the exposition steering committee, said the event will be patterned basically after previous shows. A new feature this year will be a junior horse judging contest similar to the present intercollegiate and junior livestock judging teams contests. Additional attractions will be announced as plans progress.

Open to livestock breeders in the United States and Canada, the exposition annually attracts entries well over the 3,000 mark in the horse, beef, cattle, swine and sheep departments. Last year 25 states and Canada were represented among almost 4,000 entries.

Emphasis has been on the improvement of all species of meat producing animals and the development of quality products of meat for the consumer.

The show is sponsored by the Pennsylvania Department of Agriculture and its Farm Show.

Buy Good Seed

Extension agronomists at The Pennsylvania State University urge farmers to select varieties tested and proven superior in Pennsylvania and then buy high-quality seed of those varieties.

Commission, and the Pennsylvania Livestock and Allied Industry secretary of agriculture; Thomas H. Patton and Ben Morgan, both of Penn State Universities Association.

The exposition steering committee, in addition to Secretary

Bull, includes Jack R. Grey, deputy secretary of agriculture; George G. Connor, Harrisburg; Walter Dunlap, Jr., Lancaster; Reno H. Thomas, Beavertown; and Robert H. McClintic, Ligonier.

Harold R. McCulloch, State College, is the show manager.

P. L. ROHRER & BRO., Inc.
Smoketown, Pa.

Invite you to attend a

CORN & ALFALFA GROWERS MEETING

Tuesday evening, February 27
At 7:30 P.M.

Refton Fire Hall

Meeting will be conducted by
DeKalb Agricultural Association
and
Geigy Chemical Company

TOPICS TO BE DISCUSSED:

- Complete Corn Management Program
- Alfalfa Insect Control

Refreshments will be served.

Double-barrelled
pork builder:

WAYNE PIG BALANCER "400"

Your own grain and Wayne Pig Balancer "400" is a real double-barrelled pork builder for shoats from 50 to 120 lbs. Contains the same outstanding nutrient blend as the famous regular Wayne Pig Balancer (40% protein) but with a high level of a unique antibiotic combination.

Its quality ingredients will balance your pig ration with the amino acids, vitamins and minerals lacking in grain alone. Its high antibiotic level makes it especially valuable for commercial hog lots with chronic disease problems.

You can use Wayne Pig Balancer "400" in either free choice or grind and mix programs. Either way your pigs will hit 120 lbs. quickly and efficiently, ready to finish out profitably.

Come in now and get the complete story on Wayne Pig Balancer "400".



H. JACOB HOOBER
Intercourse, Pa.

PARADISE SUPPLY
Paradise

HEISEY
FARM SERVICE
Lawn and Bellaire

GRUBB SUPPLY CO.
Elizabethtown

MOUNTVILLE
FEED SERVICE
R. D. 2, Columbia

HERSHEY BROS.
Reinholds

DUTCHMAN FEED
MILLS, INC.
R. D. 1, Stevens

MILLERSVILLE
SUPPLY CO.
Millersville

POWL'S FEED SERVICE
R. D. 1, Quarryville
R. D. 2, Peach Bottom

H. M. STAUFFER
& SONS, INC.
Witmer

WHITE OAK MILL
R. D. 4, Manheim

C. E. SAUDER & SONS
R. D. 1, East Earl

ROHRER'S MILL
R. D. 1, Ronks

AGWAY

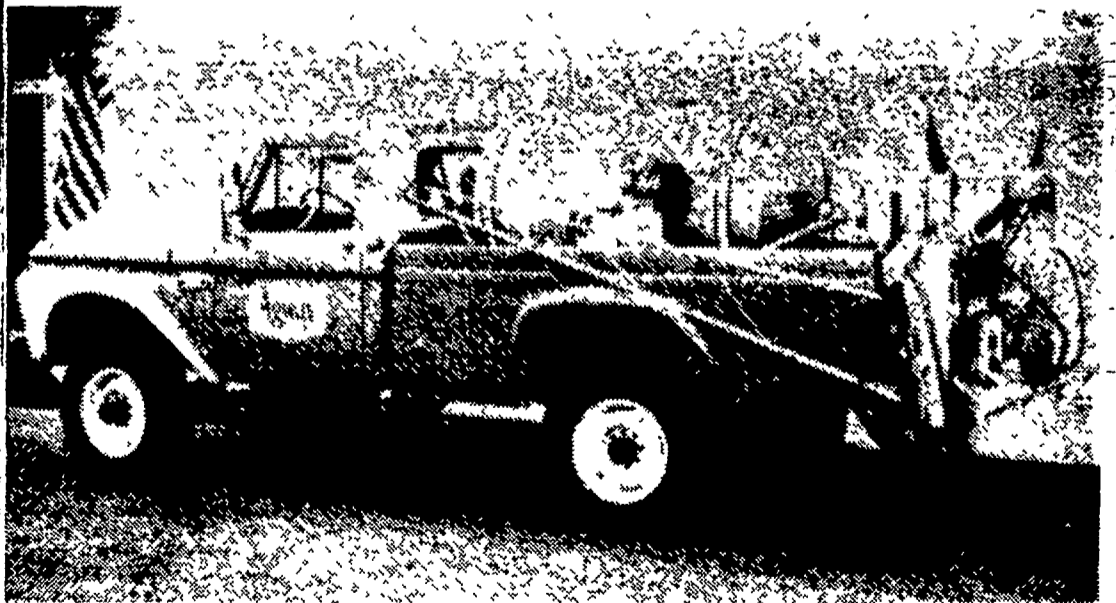
THINK SPRING!

Give us your order now for Liquid Nitrogen

NITAN 30

Top Dress Your Wheat For Bigger Yields

Also use for plow down. Let Agway and their new model 650 with a trained operator do this job for you.



CALL YOUR LOCAL AGWAY STORE

NEW HOLLAND
354-2146

LANCASTER
394-0541

QUARRYVILLE
786-2126

HOURS: 8 A.M. to 5 P.M. Weekdays — Sat. 8 A.M. to Noon