

● **Cattle Feeder**

(Continued from Page 1)

heifers expected to be used as herd replacements are being fed on the lots, 3, Purchasing power of consumers is up 6 percent; and 5, Beef demand is up 3 percent

He said prime cattle make up only 4 percent of the slaughtering market and Choice grade is 49 percent "If you are gearing your production to the largest market, Choice is it," he said

Burdette, on the subject "Reducing Costs of Gains," said the way to improve your operation is to sharpen and tighten management and use genetic differences in cattle to get faster gains "In many feed lots," he said, "it takes the top cattle in the group to pay for the bottom steers Faster gaining cattle are also more efficient"

He described these slow gainers as small boned, short, long tailed, and refined

● **Farm Calendar**

(Continued from Page 1)

7 00 p m — Garden Spot You ?
Fairme. Annual Banquet, Blue Ball Fire Hall

7 30 p m — Ephrata Adult Farmer Program, (Shipping Fever and Parasites), School Vo-Ag room

Wednesday, February 21

12 00 Noon — Inter-State Milk Producers Annual Meeting.

Hostetter's Dining Hall, Mt Joy

7 30 p m — Pleasure Horse Management Meeting, Farm and Home Center

Thursday, February 22

7 30 p m — Atlantic Northern Lancaster County District Meet, Brunnerville Fire Hall

7 30 p m — Cattle Feeder meeting, Farm and Home Center



THE PROFIT MAKER

- for • Grazing
- Green Chop
- Fast Growing
- Palatability
- Nutrition

**A. H. Hoffman
Seeds, Inc.**

Landisville, Pa. 898-2261



What's so different about Stor-N-Feed® the Butler Sealed Storage System for hay and corn silage, high moisture corn, or reconstituted milo and barley? Take a few minutes to read about the differences in Butler Sealed Storage then see your nearby Agri-Builder.

**Let your Agri-Builder® show you 8 ways
Butler Sealed Storage beats all others:**

- Time was when you could get any color car you wanted as long as it was black. Finally, public demand changed that. Today, the desire for improvement has placed a new color in Sealed Storage on farm horizons . . . the beautiful white Butler Stor-N-Feed.

As the cost price squeeze bears down harder, more and more livestock feeders and danyemen are choosing the Butler Stor-N-Feed the sealed storage system that helps them increase feeding efficiency and plug profit leaks all these ways

(1) Easy switch to unloading . . . You get more done in less time with Butler's fast, efficient push-button conversion from loading to unloading Loads out many times faster than bottom unloaders

(2) Save more, feed more of what you harvest the Butler top unloader handles 55% moisture silage that makes bottom unloaders "call it quits"

(3) Less maintenance cost . . . averages about one-tenth that of another well-known make The Butler loader-unloader is up out of the way, where you can get to it for quick maintenance

(4) More economical fill. During loading, the Butler distributor spreads silage evenly No "peaking," no wasted storage space

(5) White exterior coating reflects the sun's rays, promotes better fermentation in summer avoids excess heat build up, produces sweeter silage

(6) Exclusive, all-steel breather chamber, set in the foundation, out of the way, keeps an from mixing with preservative carbon dioxide — provides safer storage. No bags to replace.

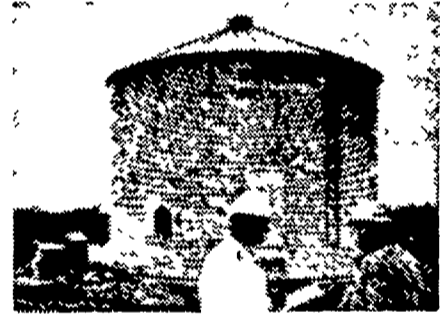
(7) Lower cost per ton of storage, due to reasonable prices, more efficient filling and higher-capacity units.

(8) Complete service from your Agri-Builder Includes planning, construction, follow-up service, financial help and the broadest line of steel farm structures available from one source.

Your Agri-Builder, like you, is in business to stay He wants to give you first-class service, because he's a local businessman His roots and his capital, time and labor are tied directly to your farming community. See him soon, or write Butler Manufacturing Company, Dept. 100, 7400 E. 13th St., Kansas City, Mo. 64126.



All-steel Buildings: Your nearby Agri-Builder can show you why, on today's best-looking farmsteads, you'll see more Butler Rigid Frame Buildings than any other brand



Be sure to ask your Butler Agri-Builder how the Stor-N-Dry System pays for itself by helping you market or feed more of your grain harvest.



Builders for the farmer who's in business to stay

Butler Agri-Products Division

Now Available in Bottom or Top Unloader



DESIGNERS and BUILDERS of SYSTEMS

AGRI - INC.

(FORMERLY ADDISON MARTIN, INC.)

R. D. 2, Ephrata

Phone: 717-354-5374

We are your Butler Agri-Builder for low cost farm buildings, Stor-N-Feed livestock and dairy systems. One source responsibility.