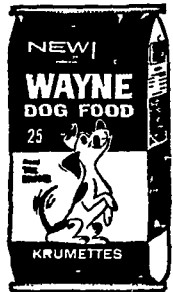


Buy It — Sell It  
With a Classified Ad  
In Lancaster Farming

**WAYNE**  
**42%**  
Dairy Mixing  
Supplement

New way to lower  
dairy feeding costs

Wayne 42% Dairy Mixing Supplement combines the economy of urea with vegetable protein. Formulated and fortified to make excellent milk producing rations from farm grains. Builds a 14, 16, 18 or 20% ration for less money. Stop in today for details and brochure on Wayne 42% Dairy Mixing Supplement.



WHITE OAK MILL  
R. D. 4, Manheim

DUTCHMAN FEED  
MILLS, INC.  
R. D. 1, Stevens

ROHRER'S MILL  
R. D. 1, Ronks

POWL'S FEED  
SERVICE  
R. D. 1, Quarryville  
R. D. 2, Peach Bottom

HEISEY  
FARM SERVICE  
Lawn and Bellaire  
MILLERSVILLE  
SUPPLY CO.  
Millersville

H. M. STAUFFER  
& SONS, INC.  
Witmer

C. E. SAUDER & SONS  
R. D. 1, East Earl

MOUNTVILLE  
FEED SERVICE  
R. D. 2, Columbia

HERSHEY BROS.  
Reinholds

PARADISE SUPPLY  
Paradise

GRUBB SUPPLY CO.  
Elizabethtown



Ralph H. Longenecker of Elizabethtown R. D. 1, second from left, and Robert H. Rohrer of Washington Boro R. D. 1, second from right, were Lancaster County champions in the 1967 Five Acre Corn Club. Both men produced 199 bushels of shelled corn per acre. Presenting ribbons recently were Joseph H. McGahan, left, Ex-

**County Five-Acre Corn Winners Named**

The five-acre corn winners have been announced for Lancaster County by Arnold G. Lueck, associate agricultural agent. Yields are reported in bushels of shelled corn 56 pounds per bushel at 15.5% moisture.

A total of 196 entries in the state were machine harvested as per the rules. Thirty-five were harvested with picker-shellers and 161 by pickers. The average yield between the two methods of harvesting was 141.3 for the picker-shellers and 141.6 for the pickers.

The top yield for the state

was a York county entry of 216.3 bushel. Second place was a Perry county entry of 210 bushel. The two top Lancaster county entries placed third and fourth in the state-wide results.

County placings are as follows:

Ralph H. Longenecker, Elizabethtown R1, Pioneer 3306, 199.4 bu., 20300 plant population, Robert H. Rohrer, Washington Boro R1, Pioneer 3306, 199.3 bu., 25722 plant pop.; Robert G. Brubaker, Elizabethtown R3, Pioneer 3306, 180.8 bu., 23550 plant pop.; Glenn B. Thomas, Lititz R3, Pioneer 3306, 179.3 bu., 23250 plant pop.; Glenn S. Brubaker, 345 Running Pump Rd., Lancaster, Pioneer 3306, 176.6 bu., 20800 plant pop.; Raymond S. Brubaker, 206 Rohrerstown Rd., Lancaster, Pioneer



tension agronomy specialist at Penn State, and associate county agent A. G. Lueck, right. The occasion was the annual corn growers banquet in Harrisburg, sponsored by the Pennsylvania Crop Improvement Association.

John H. Charles, Millersville plant pop., 3306, 175.6 bu., 21090 plant pop., kalb XL 45, 153.1 bu., 20000 plant pop.; David H. McMichael, Lancaster R6, Todd M55, 146.6 bu., 23250 plant pop.; Clinton & Levi Rohrer, Lititz R2, Pioneer 3306, 172.6 bu., 19600 plant pop.; Forney F. Longenecker, Lititz R3, Eastland E. Hess, Manetta R1, Pioneer 860, 143.7 bu., 21650 plant pop.; John E. Hess, Manetta R1, Pioneer 3306, 167.8 bu., 20800 plant pop.; John E. Hess, Manetta R1, Pioneer 3306, 141.9 bu., 22000 plant pop.; Paul B. Bollinger, Denver R2, Dekalb XL 872, 159.7 bu., 17900 plant pop.; Aaron Stauffer, Agway 800, 141.6 bu., 13150 plant pop.; J. Harold Elizabethtown R2, Pioneer 323, 139.3 bu., 14750 plant pop.



**New Economical John Deere Loader  
... Ideal for Confined Areas**

Mount the economical 37 Loader on your John Deere "1020," "2020," or "2510" Tractor and you have a compact outfit for all your loader work. 40-inch manure and materials buckets . . . blade and crane attachments available.



Use our convenient, confidential Credit Plan

Landis Bros. Inc.  
Lancaster 393-3906

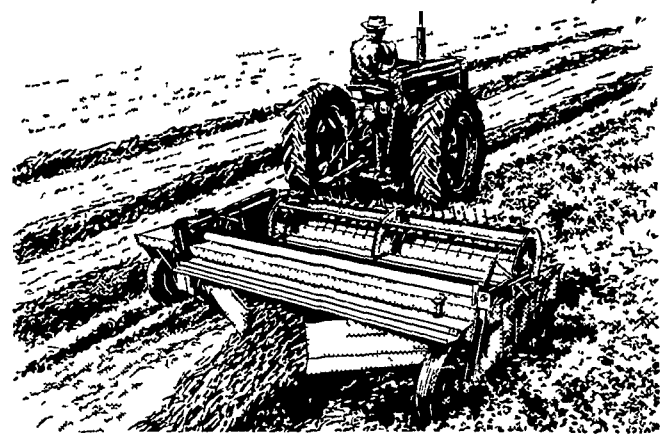
M. S. Yearsley & Sons  
West Chester 609-2990

Shotzberger's  
Elm 665-2141

A. B. C. Groff, Inc.  
New Holland 354-4191

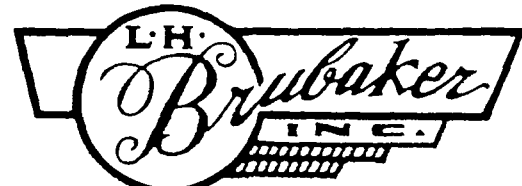
Wenger Implement Co.  
Buck 284-4467

**Hard-To-Handle  
Crops Are Easy Going  
For A Haybine®  
Mower-Crusher!**



New Holland's new Haybine® mower-crusher sweeps through the tallest, thickest crops at up to 8 mph . . . producing an 8 ft. 9 in. swath (or a windrow) of fully-conditioned, fluffed-up hay. Whether you bale or chop your hay crops, you'll like the way the reel keeps the cutterbar clear, and practically eliminates plugging . . . even in tangled, downed crops! See this one-man haying machine now. Phone or stop in for a demonstration.

**NEW HOLLAND**



R. D. 3, Lititz, Pa.  
350 Strasburg Pike, Lancaster

Phone: Lanc. 397-5179 — Strasburg 687-6002 — Lititz 626-7766